



MEETING OF THE  
PARKS & OPEN SPACE ADVISORY COMMITTEE  
BOULDER COUNTY, COLORADO  
AGENDA

Thursday, May 25, 2023, 6:30 p.m.

Third Floor Hearing Room

County Court House

1325 Pearl Street, Boulder

---

1. Call to Order
2. Roll Call
3. Approval of Last Month's Minutes
4. Public Comment Period for Items Not on Agenda
5. POSAC Members Comment Period for Items Not on Agenda
6. Presentations
  - 6.1 Museum Master Interpretive Plans for the Agricultural Heritage Center and Mining Museums  
Presenters: Seth Frankel and JJ Rutherford, Studio Tectonic  
  
**Action Requested: Information only**
  - 6.2 Historic Preservation Update  
Staff Presenter: Will Towle, Buildings and Historic Preservation Supervisor  
  
**Action Requested: Information only**
  - 6.3 Wapiti Trail Reroute Update  
Staff Presenter: Jarret Roberts, Recreation and Facilities Division Manager  
  
**Action Requested: Information only**
7. Director's Update
8. Adjournment



**MEETING OF THE PARKS & OPEN SPACE ADVISORY COMMITTEE**

**BOULDER COUNTY, COLORADO**

**Regular Meeting Minutes**

**April 27, 2023, 6:30 p.m.**

**Third Floor Hearing Room**

**County Court House**

**1325 Pearl Street, Boulder**

Members Present: Janet George  
Tony Lewis  
Trace Baker  
Paula Fitzgerald  
Drew Adams  
Carol Byerly  
Kristine Johnson  
Derek Turner

Excused:  
Jackson Moller

- 
1. **Call to Order**
  2. **Roll Call**
  3. **Election of Vice Chair**

Drew Adams nominated Tony Lewis for Vice Chair. Paula Fitzgerald seconded the nomination. The majority voted to approve Tony Lewis for Vice Chair.

**4. Approval of Last Month's Minutes**

Paula Fitzgerald moved approval of the March meeting minutes. Janet George seconded. The meeting minutes are approved by unanimous vote.

**5. Public Comment Period for Items Not on Agenda**

Wendy Sweet, Executive Director of Boulder Mountainbike Alliance, 3600 Dartmouth, Boulder. She was glad to see the hard work done on the Wapiti Trail. She said Heil trail building will be difficult due to soil conditions. She said public was not involved in trail rebuilding discussions.

Tess McDonald, 376 JJ Kelly Rd, Lyons. She was concerned about pesticides being used with no notification. Concerned that people are unaware of the spraying. Also, expressed concern about the effects to soil and climate from the pesticides.

Kathleen Sands, 1612 Green Pl., Longmont. She is part of Lyons Climate Action and she is concerned about pesticide use. She said there was about 50 years of topsoil left. She expressed concerns about public values versus POS values and how they differ.

**6. POSAC Members Comment Period for Items Not on Agenda**

Tony Lewis asked for more information about the process of how trails are laid out.

Therese Glowacki responded that staff does an assessment of the area for conservation values, including wildlife and rare plants, and then look to see what areas would be appropriate. In the case of Heil Valley Ranch, the US Fish & Wildlife Service said we could not have a trail so close to the new golden eagle nest. BCPOS staff are also aware that rare plants are present in the area. This information that was considered in the process, which limited our options. In many instances of trail planning, public comments are considered, but this was not a case where this was appropriate.

Kristine Johnson asked if the public feedback is ever considered in the manner of construction of a trail.

Therese Glowacki responded that the public and volunteer groups are often included in those considerations.

Paula Fitzgerald asked if BCPOS was planning to add barriers to prevent cross cutting by visitors where there are switchbacks.

Therese Glowacki responded that our trails are monitored, and Heil Valley Ranch has an onsite caretaker watching for problems.

Jarret Roberts, Recreation & Facilities Division Manager, added that the trails crew is using dead trees from the burn area to use as barriers in the area of switchbacks.

## **7. Presentations**

### **7.1 Cultural Resources Update**

Staff Presenter: Carol Beam, Cultural Resource Specialist

**Action Requested: Information only**

### **7.2 Cultural Responsiveness & Inclusion Strategic Plan (CRISP) Update**

Staff Presenters: Mary Olson, Landscape Architect and Ernst Strenge, Senior Planner

**Action Requested: Information only**

### **7.3 Agricultural Resources Program Update**

Staff Presenter: Mike Foster, Agricultural Resources Division Manager

**Action Requested: Information only**

## **8. Director's Update**

- The East Boulder Creek Management Plan is entering Phase 2, which will include field trips, open houses, and a second online survey. The first survey in Phase 1 received over 1,000 comments.
- Earth Day events included thirteen volunteers at Hall Ranch to work on trail reroutes to lesson the number of closures due to muddy trails.
- New bilingual sign panels will be installed at Carolyn Holmberg Preserve at Rock Creek Farm soon. Our department has hired a second position to the Signs staff.
- There will be construction in the parking lot at Heil Valley Ranch to replace bridges that were lost in the Calwood fire. No trail closures are planned during this work.
- The Agricultural Heritage Center is implementing the stabilization of the McIntosh barn, so it can stand for many more years.
- The Boulder County community sort yards are reopening: Nederland on May 3, Meeker Park on May 17.

- The five-county area along with NoCo Places is pushing COTREX as the go-to app for finding trails. <https://trails.colorado.gov/>
- The bridge culvert on the Hidden Star Trail, which is part of the Niwot Loop trail system, has been fixed and expanded as part of our maintenance backlog projects.
- The Redbelly Dace Project, which has raised and released the fish locally, has been expanded to include Northern Leopard Frogs, a species of special concern.

**9. Adjournment**



## Parks & Open Space

5201 St. Vrain Road • Longmont, CO 80503  
303-678-6200 • POSinfo@bouldercounty.org  
www.BoulderCountyOpenSpace.org

### PARKS & OPEN SPACE ADVISORY COMMITTEE MEETING

Time/Date of Meeting: 6:30 p.m., Thursday, May 25, 2023

Location: Boulder County Courthouse  
1325 Pearl Street, Third Floor, Boulder

<b>TO:</b>	Parks & Open Space Advisory Committee
<b>FROM/PRESENTER:</b>	Sheryl Kippen, Cultural History Program Coordinator
<b>AGENDA ITEM:</b>	<b>Museum Master Interpretive Plans for the Agricultural Heritage Center and Mining Museums</b>
<b>ACTION REQUESTED:</b>	Information Only

This presentation, by the contractors from Studio Tectonic that developed the Master Plans, discusses the future for the Agricultural Heritage Center and Nederland Mining Museum and Assay Office Museum.

Because much of the volunteer training and interpretive material for our museums was developed ten or more years ago, concepts, language, and learning have evolved. What is shared with visitors needs to be made current, more welcoming, relevant, and equitable for all visitors, telling the unique histories of the many cultures of Boulder County.

These Museum Master Interpretive plans share short- and long-term themes to be gradually implemented at the museums.

:



# Parks & Open Space

5201 St. Vrain Road • Longmont, CO 80503  
303-678-6200 • POSinfo@bouldercounty.org  
www.BoulderCountyOpenSpace.org

## PARKS & OPEN SPACE ADVISORY COMMITTEE MEETING

Time/Date of Meeting: 6:30 p.m., Thursday, May 25, 2023

Location: Boulder County Courthouse  
1325 Pearl Street, Third Floor, Boulder

<b>TO:</b>	Parks & Open Space Advisory Committee
<b>FROM/PRESENTER:</b>	Will Towle
<b>AGENDA ITEM:</b>	<b>Historic Preservation Update</b>
<b>ACTION REQUESTED:</b>	Information Only

### INTRODUCTION

Boulder County Parks & Open Space manages a database of 500+/- historic sites, categorized as sites (no structure present), objects (ex: stone wall or rock formation), and buildings or structures. This presentation will provide an overview of management strategies addressing the care of these important cultural assets.

### BACKGROUND

Boulder County Parks & Open Space directly manages over 75,800 acres, with approximately 215 historic buildings and 136 historic structures on 60 different open space properties. It is the responsibility of the Buildings and Historic Preservation workgroup to maintain, preserve and manage these structures, ranging from entire intact farmsteads to stone walls and fences. These valuable assets are a glimpse into Boulder County's recent history and, in addition to cultural artifact archives, museums, and other contributions, add to the ability to interpret Boulder's greater cultural and historical context. Many of these historic buildings are actively used by our Education and Outreach workgroup in the translation of Boulder County's recent history to the public.



## Parks & Open Space

5201 St. Vrain Road • Longmont, CO 80503  
303-678-6200 • POSinfo@bouldercounty.org  
www.BoulderCountyOpenSpace.org

### PARKS & OPEN SPACE ADVISORY COMMITTEE MEETING

Time/Date of Meeting: 6:30 p.m., Thursday, May 25, 2023

Location: Boulder County Courthouse  
1325 Pearl Street, Third Floor, Boulder

<b>TO:</b>	Parks & Open Space Advisory Committee
<b>FROM/PRESENTER:</b>	Jarret Roberts, Recreation and Facilities Division Manager
<b>AGENDA ITEM:</b>	<b>Wapiti Trail Reroute Update</b>
<b>ACTION REQUESTED:</b>	Information Only

Summary: In response to inquiries about conceptual trail alignments flagged on the ground at Heil Valley Ranch, the BCPOS Trail Staff presented a preliminary trail design for rerouting the Wapiti trail posted to the Heil Valley Ranch website on April 25. The department continued to pursue improving the alignment, and comments from multiple visitor groups reiterated the desire to refine the reroute further if possible. Below is the updated conceptual alignment based on the work of BCPOS staff in coordinating and balancing resource protection, visitor experience, construction time/cost/feasibility, and trail sustainability.

#### Background:

In October 2020, the Cal-Wood Fire burned more than 10,000 acres, including a portion of BCPOS's Heil Valley Ranch. Subsequently, Heil Valley Ranch was closed to the public while trails and other infrastructure were repaired. During this time, a golden eagle nesting site relocated. Boulder County works with Colorado Parks and Wildlife and the US Fish and Wildlife Service to follow federal guidance on the protection of sensitive species such as golden eagles. The new nest location is near a section of the Wapiti Trail and falls within the buffer zone required by CPW and the USFWS. To avoid this buffer zone, the Wapiti Trail was detoured to a nearby maintenance access road, where it has remained as alternatives have been evaluated.

Starting in 2023, BCPOS trails staff worked with BCPOS wildlife, ecological, and cultural staff to examine several reroute options. Following common practice, trails staff seeks to design trails to balance the experiences of multiple visitor groups, reduce long-term maintenance needs through sustainable trail grades, and protect and conserve sensitive ecological communities and habitats. Geographic constraints such as deep ravines, sensitive plant communities, and the federal eagle nesting buffer largely constrained the potential area for a reroute. While the staff delineated a trail alignment that fit the parameters described above, it required more switchbacks than the department would have preferred in such a small area. This option was shared with the public while trails staff continued to pursue the feasibility of an improved route if resource and geographic constraints allowed.

Public engagement in high-level conceptual trail design is part of BCPOS's typical process where possible. This is especially true during site management plans where compromises are looked at across the entire site, and desires can be captured from a multitude of visitor groups. Engagement is focused on the types of experiences and major control points rather



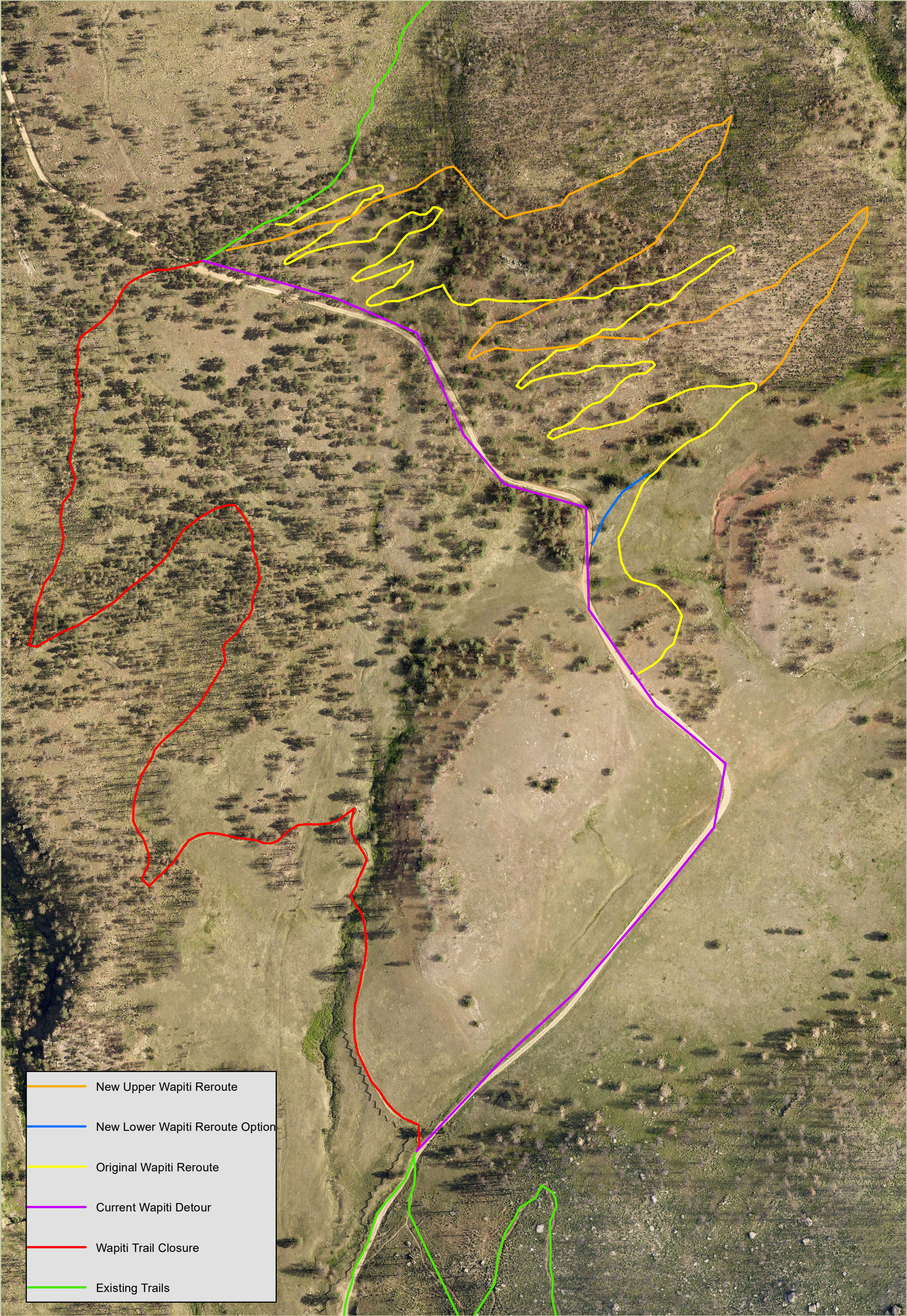
than specific alignments. Trails staff balances desires from and between visitor groups along with cultural/ecological constraints to find the best alignment that meets maximum desired grades. Trails staff also spend days in the field taking measurements and refining trail alignment to meet the actual topography, something that cannot be captured through GIS layers or topographic lines on a map. Often a conceptual alignment that looks feasible on a screen or paper cannot be actualized once reviewed in the field.

The updated alignment of the Wapiti reroute does just this. By compromising a more difficult construction across a drainage, four switchbacks were able to be eliminated in the upper section of the reroute, greatly improving the visitor experience. In the lower section, another three switchbacks were removed by altering the alignment further east than the preliminary plans allowed. This lower refinement was partially considered thanks to a concept brought forward by a partner organization. Again, BCPOS welcomes community input, ideas, and concepts that can bring great ideas to the table and always needs to make sure the concept is possible/equitable to implement. At the same time, staff must work internally, verifying grades in the field, ensuring permitting requirements are met, and overlapping sensitive ecological/cultural constraints. All while considering the county and department's goals, available resources, and balancing different visitor group desires.

This proposed alignment is still a draft and under review by US Fish and Wildlife Service. Through this POSAC update we continue to welcome feedback and comments from the public.

See attachment A: Heil Valley Ranch- Wapiti Reroute Options.





New Upper Wapiti Reroute

New Lower Wapiti Reroute Option

Original Wapiti Reroute

Current Wapiti Detour

Wapiti Trail Closure

Existing Trails

