

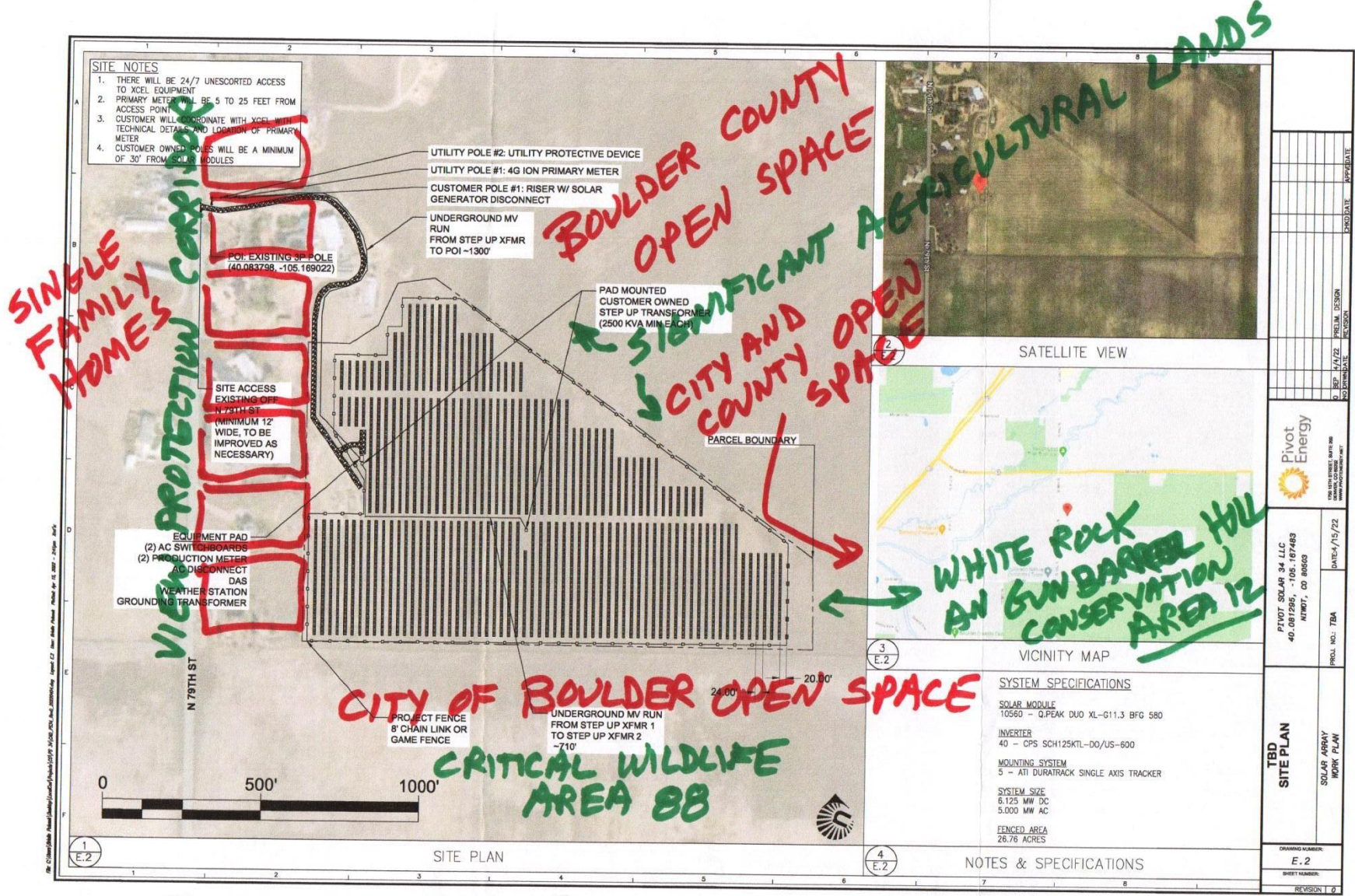


Existing View

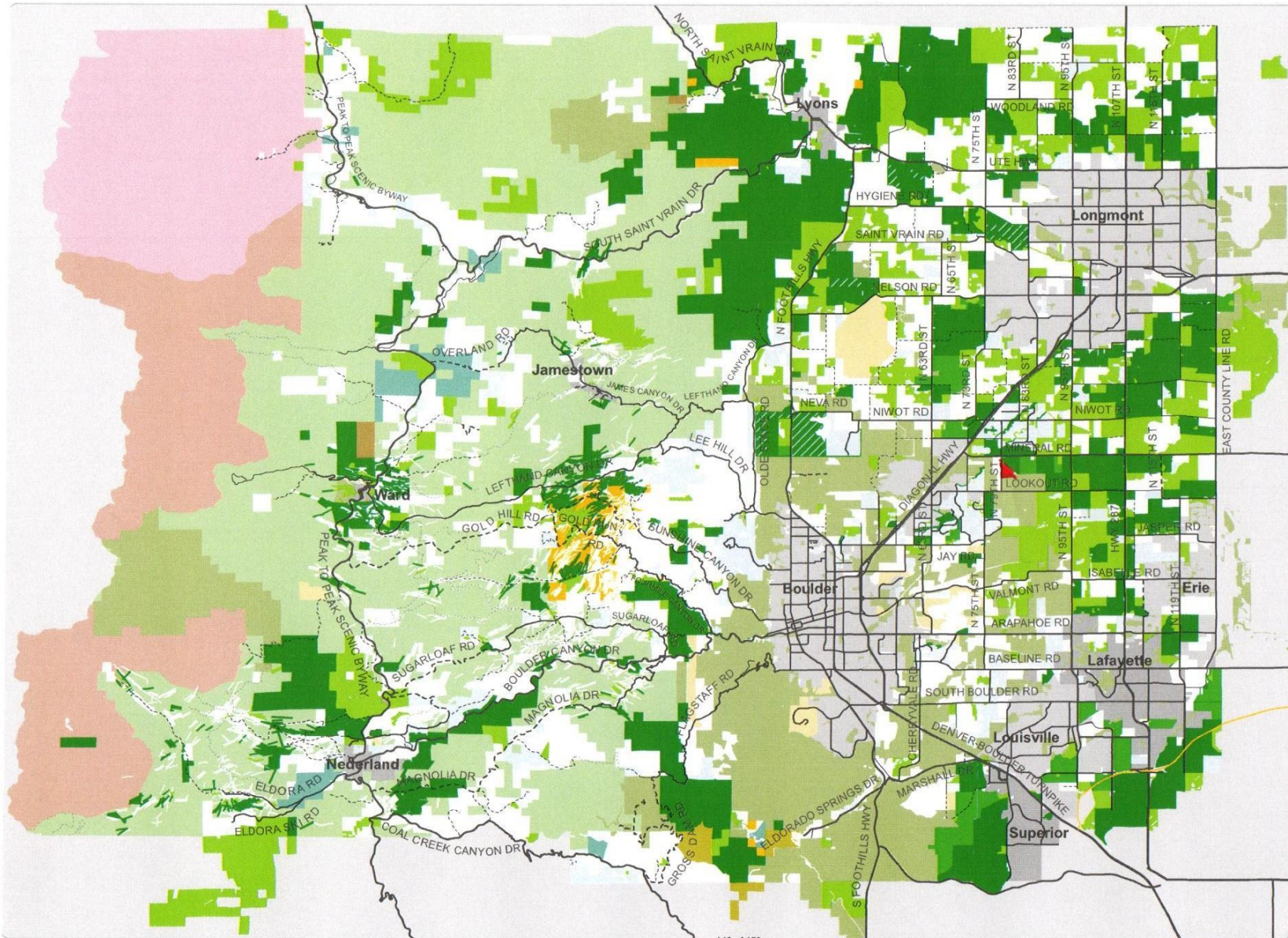
VIEW FROM OUR  
BACKYARD



View With Solar



This project will create a black smear in the middle of the iconic Gunbarrel Hill !!!



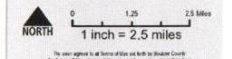
## Open Space and Public Lands

**Boulder County Comprehensive Plan**  
 Revisions Adopted March 15, 2017  
 Planning Commission

- County Open Space
- County Conservation Easement
- Joint County/City Open Space
- County Option Parcels
- City Parks & Open Space
- State Land Board
- State Parks
- Indian Peaks Wilderness
- USFS Land
- BLM Land
- Rocky Mountain N.P.
- Other Public Lands
- Non-County Conservation Easement
- Subdivisions and Other Platted Areas
- Incorporated Area

Not all properties are open to public access. Contact the Boulder County Parks and Open Space Department for more information.

Open space shown as of March 2017. See Boulder County website for more detail and current open space properties.





# Community Planning & Permitting

2045 13th Street, Boulder, CO 80302 303-441-3930 www.bouldercounty.org

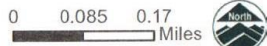
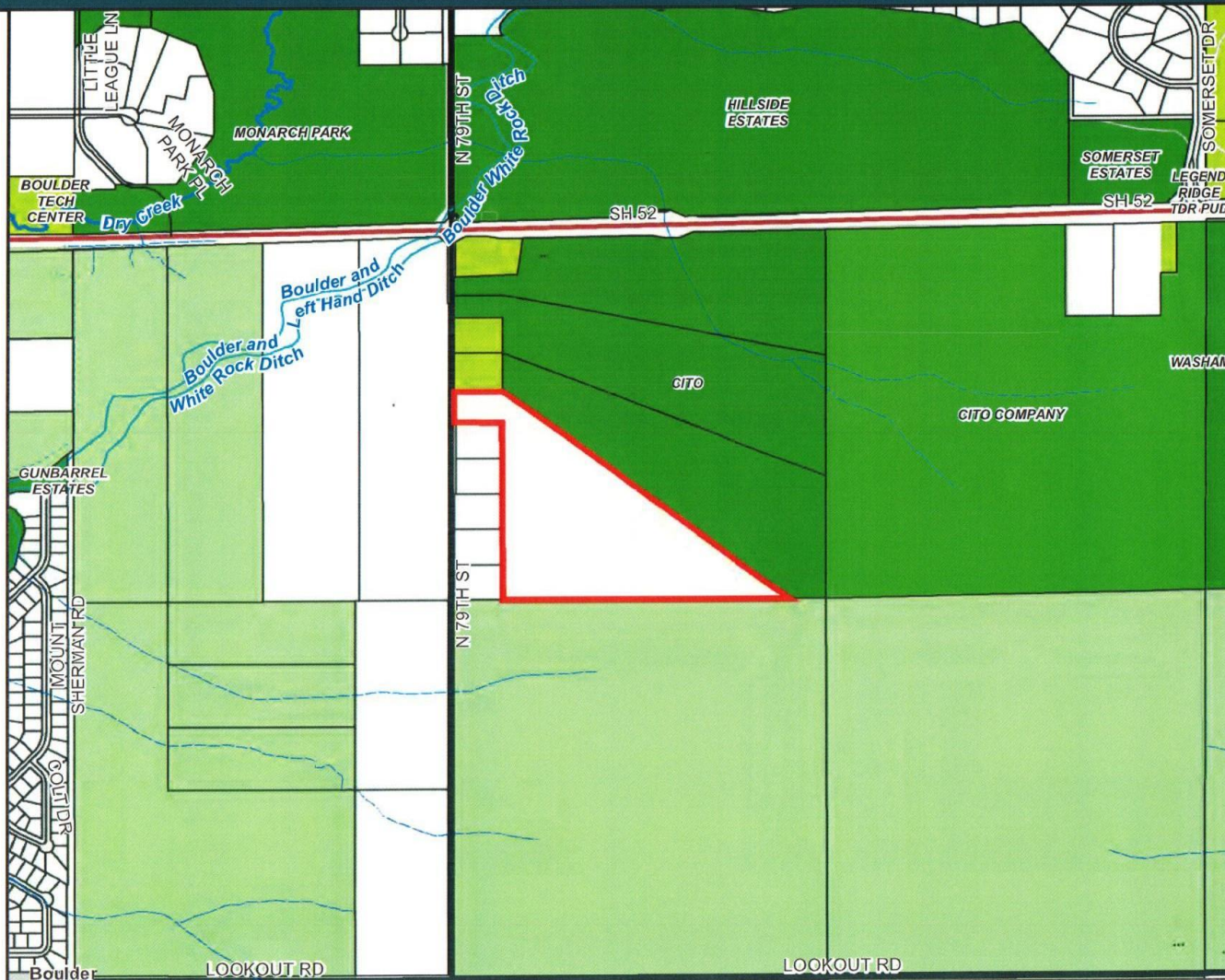
Public Lands & CEs

5980 79TH

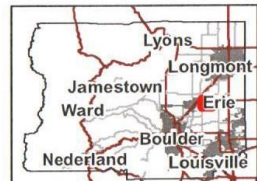
Subject Parcel

## Boulder County Open Space

- County Open Space
- Joint
- County/Municipal Open Space
- County
- Conservation Easement
- OSMP Properties

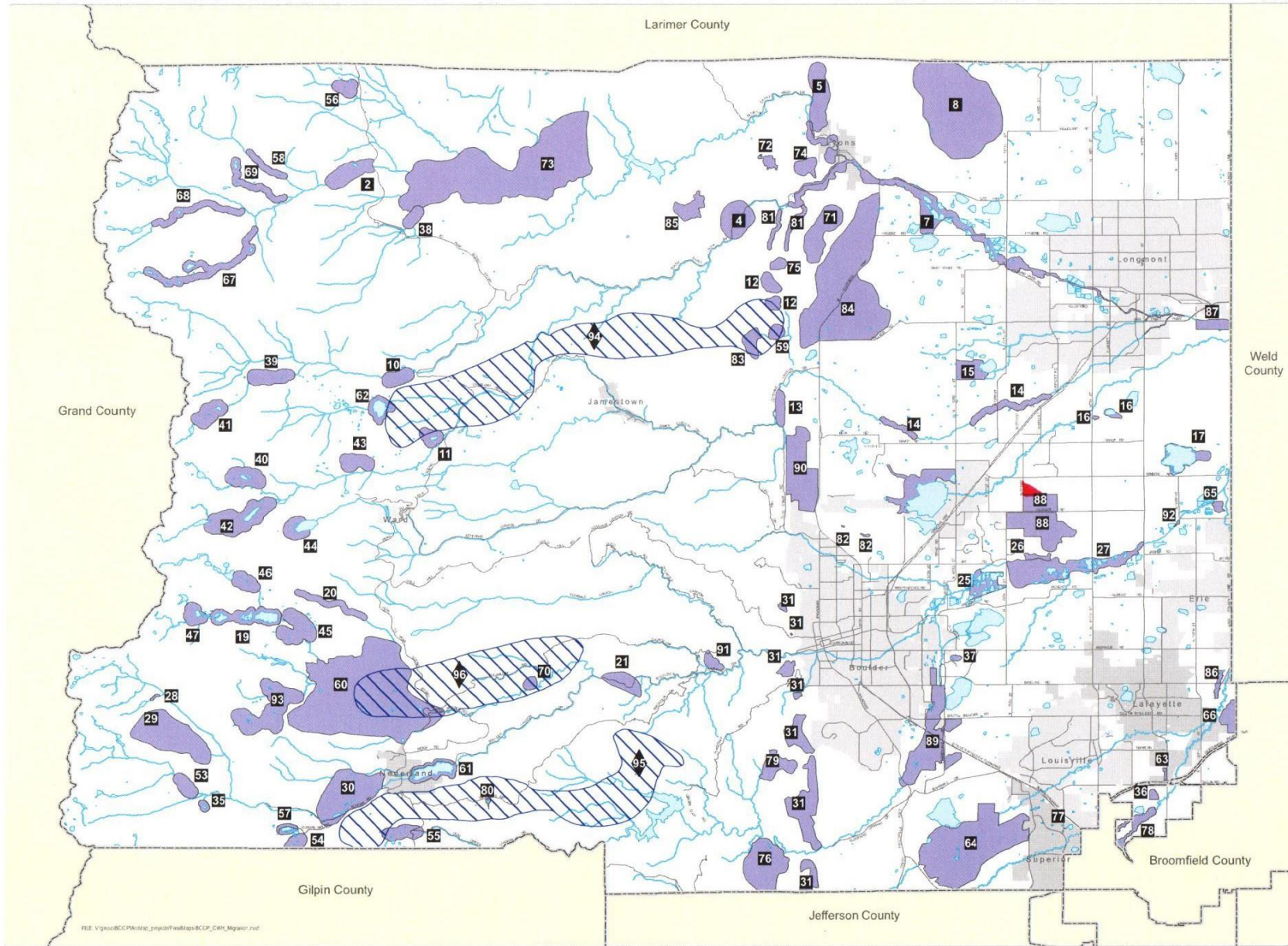


Area of Detail Date: 6/14/2021



The user agrees to all Terms of Use set forth by Boulder County. For Terms of Use, please visit: [www.bouldercounty.org/mapdisclaimer](http://www.bouldercounty.org/mapdisclaimer)





FILE: V:\gis\BCCP\Map\map\_project\maps\BCCP\_CWH\_Migration.mxd

# Critical Wildlife Habitat and Migration Corridors

Boulder County  
Comprehensive Plan

## Critical Wildlife Habitats

**1**

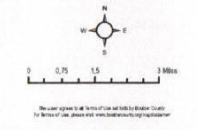
An area of unique habitat which has a crucial role in sustaining populations of native wildlife and in perpetuating and encouraging a diversity of native species in the county. The area may be significantly productive habitat or particularly vital to the life requirements of species that are critically imperiled or vulnerable to extirpation.

## Wildlife Migration Corridors

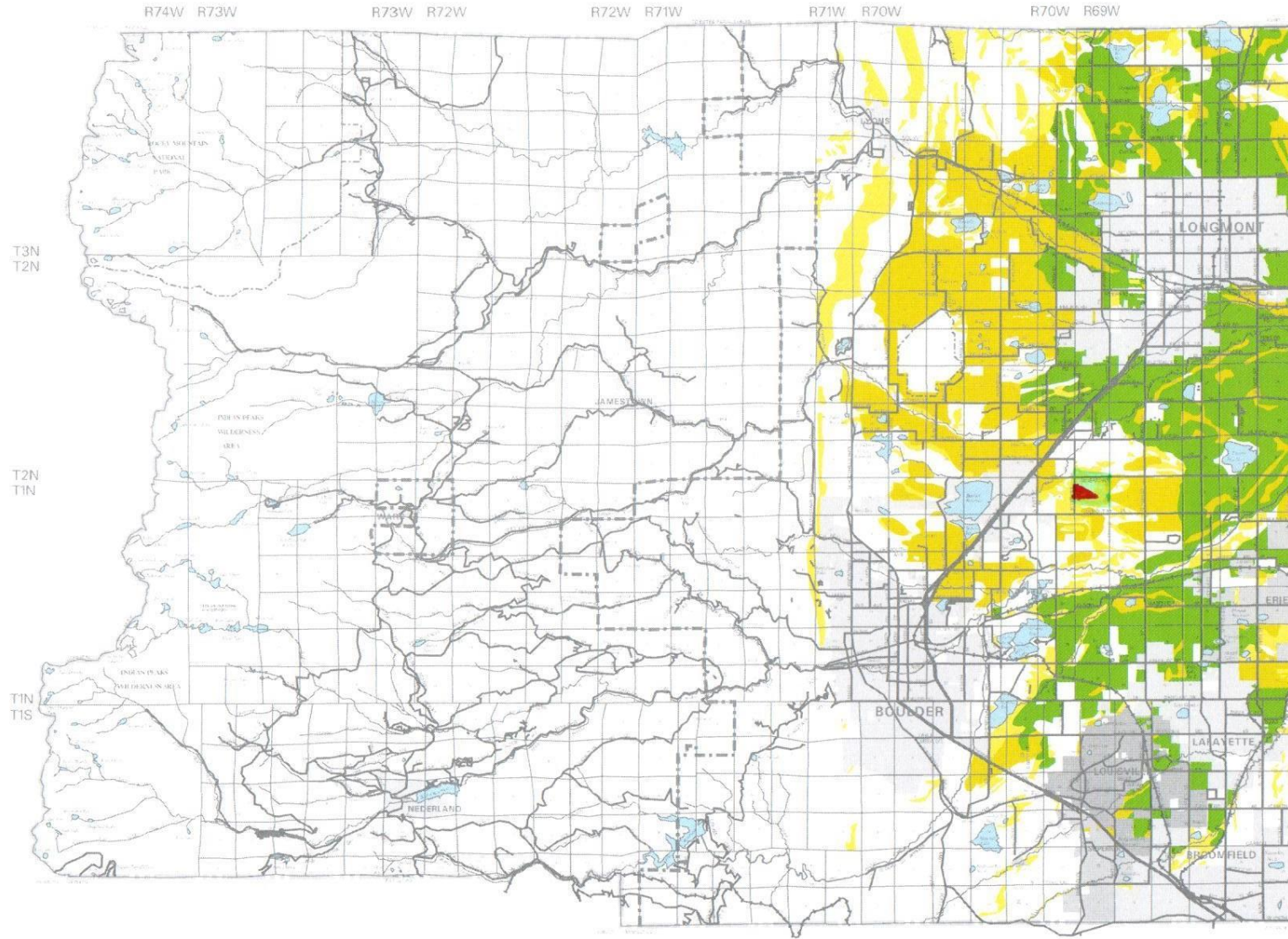
**1**

A specific, delineated area of known elk migration movement for a major elk herd in Boulder County.

Adopted October 15, 2014  
Planning Commission



**Significant Agricultural Lands**  
Environmental Resources



**Legend**

- Lands of National Importance
- Lands of Statewide Importance
- Lands of Local Importance
- Incorporated Areas  
*(As of June 9, 1998)*

**Notes**

Map scale and reproduction method limit precision in physical features and boundary locations.  
PRINTED - JULY 1, 1998

Adopted - Planning Commission - July 16, 1997  
Approved - County Commissioners - August 14, 1997

0 1 2 3 4 5  
MILES

**COMPREHENSIVE  
PLAN MAP**



# Community Planning & Permitting

2045 13th Street, Boulder, CO 80302 303-441-3930 www.bouldercounty.org

## Comprehensive Plan

5980 79TH

Subject Parcel

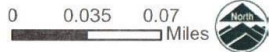
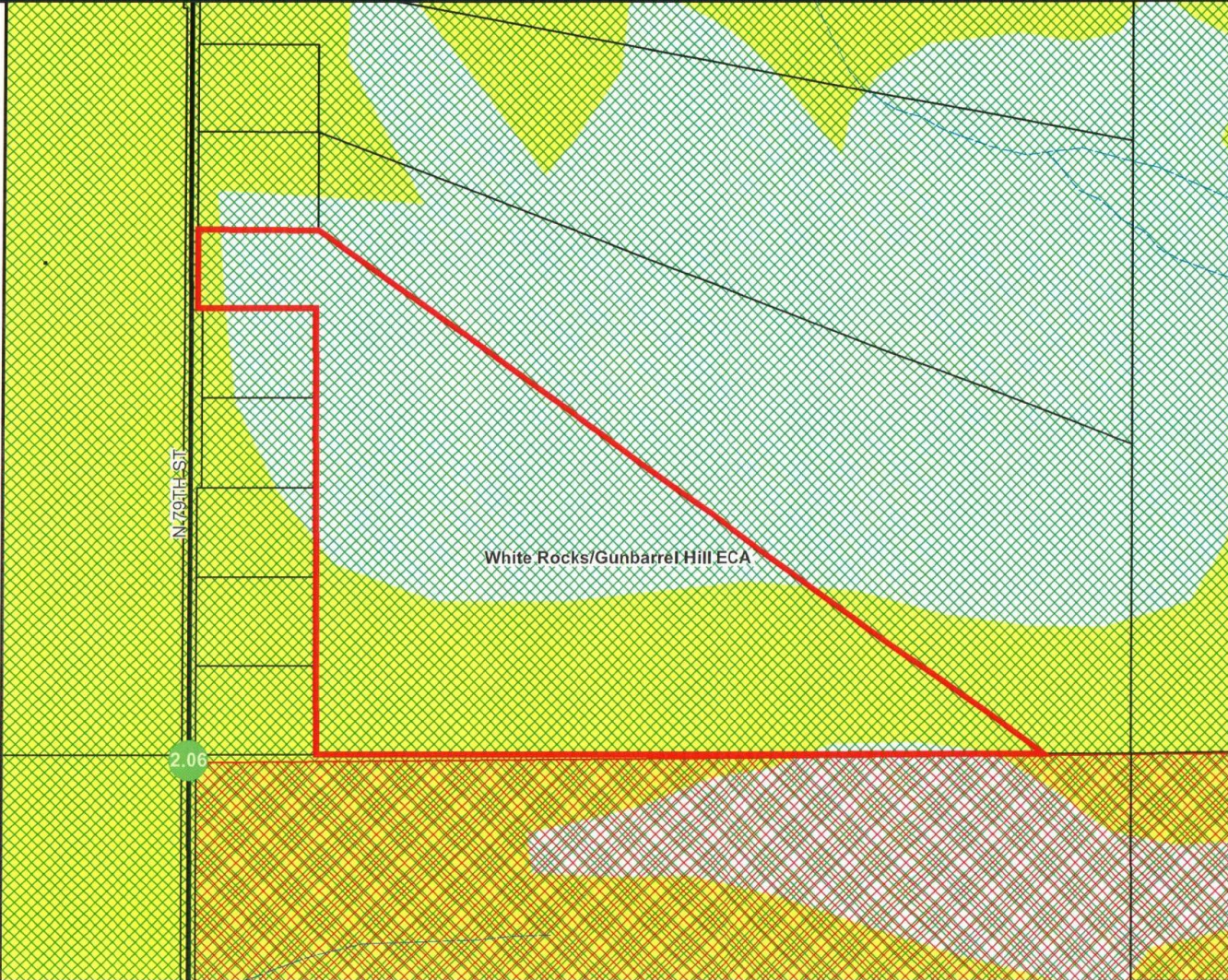
Critical Wildlife Habitats

Environmental Conservation Areas

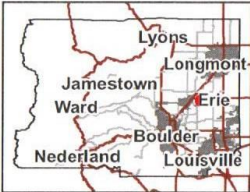
Wetlands

### Significant Agricultural Land

Ag of Local Importance

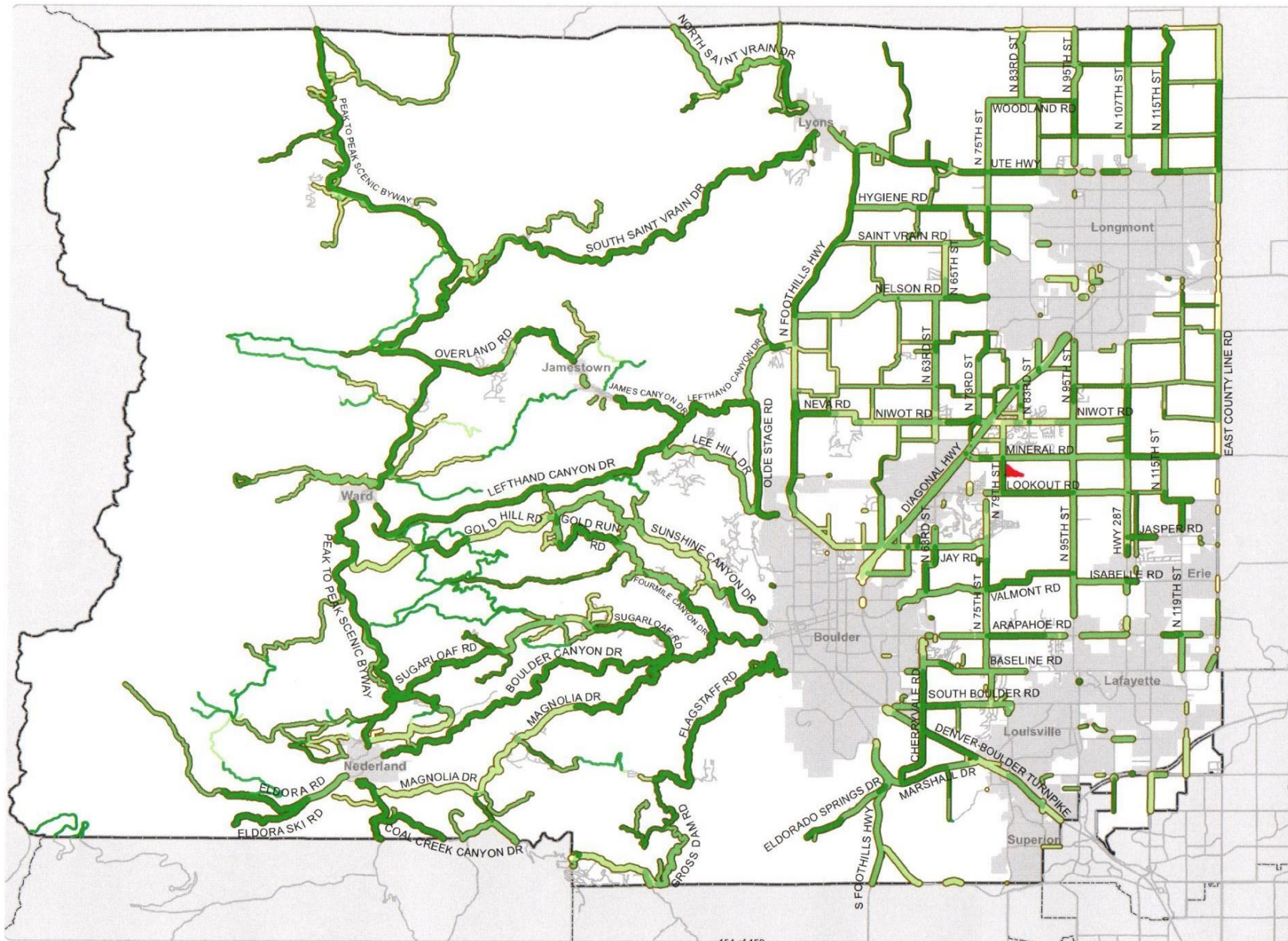


Area of Detail Date: 6/14/2021

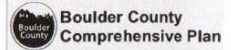


The user agrees to all Terms of Use set forth by Boulder County. For Terms of Use, please visit: [www.bouldercounty.org/mapdisclaimer](http://www.bouldercounty.org/mapdisclaimer)



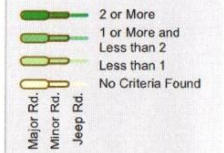


## View Protection Corridors



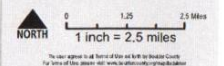
**Boulder County  
Comprehensive Plan**  
Revisions Adopted March 15, 2017  
Planning Commission

### View Protection Corridor Score



This map is intended to help inform a planner's assessment of the aesthetic view characteristics from Boulder County's roadways and to serve as a tool to support implementation of Policy 1.02.01 of the Open Space Element: "the county shall avoid, minimize, or mitigate impacts on views from view protection corridors." Reviews of development proposals incorporate a variety of site-specific considerations; this map is one component in staff's overall analysis. This map depicts view protection scores by road segment. See the Open Space Element Appendix for detail on the criteria and scoring system. The width of the View Protection Corridor line is for cartographic purposes to depict the type of roadway and does not represent land area.

Printed 3/16/2017





Existing View

VIEW FROM OUR  
BACKYARD



View With Solar



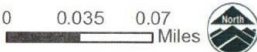
# Community Planning & Permitting

2045 13th Street, Boulder, CO 80302 303-441-3930 www.bouldercounty.org

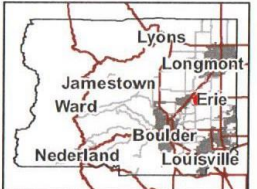
## Comprehensive Plan

5980 79TH

- Subject Parcel
- Critical Wildlife Habitats
- Environmental Conservation Areas
- Wetlands
- Significant Agricultural Land**
- Ag of Local Importance



Area of Detail Date: 6/14/2021



The user agrees to all Terms of Use set forth by Boulder County. For Terms of Use, please visit: [www.bouldercounty.org/mapdisclaimer](http://www.bouldercounty.org/mapdisclaimer)

