



**DEPARTMENT OF THE ARMY**  
CORPS OF ENGINEERS, OMAHA DISTRICT  
DENVER REGULATORY OFFICE, 9307 SOUTH WADSWORTH BOULEVARD  
LITTLETON, COLORADO 80128-6901

July 27, 2022

**SUBJECT: Approved Jurisdictional Determination**  
**Corps File No. NWO-2021-01613-DEN, SH 119, Boulder to Longmont**

Jason Roth  
Colorado Dept of Transportation  
10601 West 10<sup>th</sup> Street  
Greeley, CO 80634

Dear Mr. Roth:

This letter is in reference to the State Highway 119 Mobility Improvements project, located at approximate latitude 40.0892194°, longitude -105.1899500°, in Boulder County, Colorado. We received a request for an Approved Jurisdictional Determination (JD) for aquatic resources located within the above project area. The delineated areas located on the subject property have been reviewed in accordance with Section 404 of the Clean Water Act under which the U.S. Army Corps of Engineers regulates the discharge of dredged and fill material, and any excavation activity associated with a dredge and fill project in waters of the United States.

At your request, a JD has been prepared for the subject area. Based on a review of available documentation, we have determined that the following aquatic resources found on the AJD-Figures and AJD-Features-IDs table dated April 28, 2022, of the revised request are not waters of the United States: 1-A-1, 1-A-2, 1-A-3, 1-A-4, 1-A-5, 1-C-1, 1-C-2, 1-D-1, 1-D-2, 1-D-3, 1-E-1, 1-E-2, 1-E-3, 1-F-1, 1-F-2, 1-F-3, 2-A-1, 2-A-2, 2-A-3, 2-A-4, 2-B-1, 2-B-2, 2-B-3, 2-C-1, 2-C-2, 2-C-3, 2-C-4, 2-D-2, 2-D-3, 2-E-1, 2-E-2, 3-A-2, 3-A-3, 3-A-4, 3-A-5, 3-A-6, 3-A-7, 3-B-1, 3-B-2, 3-B-3, 3-B-4, 3-C-1, 3-C-2, 3-C-3, 3-C-4, 3-C-5, 3-C-6, 3-C-7, 3-C-8, 3-D-2, 3-D-3. The attached JD forms provide rationale for why these aquatic resources do not meet the definition of waters of the United States. Therefore, a Department of the Army permit is not required for the discharge of fill material into these aquatic resources under Section 404.

We have also determined that the following aquatic resources are jurisdictional: Dry Creek and abutting wetland 2-D-4, Fourmile Canyon Creek and abutting wetland 3-D-4, Little Dry Creek and abutting wetland 2-D-5, Left Hand Creek and abutting wetlands 1-B-2, 1-B-3, 1-B-4, Wonderland Creek wetlands 3-E-1, 3-E-2. The attached JD forms provide rationale for why these aquatic resources meets the definition of waters of the United States. If any work associated with this project requires the placement of dredged or fill material in these aquatic resources, this office should be notified by a proponent of the project for Department of the Army permits

- 2 -

The JD is attached to this letter. If you are not in agreement with the JD decision, you may request an administrative appeal under regulation 33 CFR 331, by using the attached Appeal Form and Administrative Appeal Process form. The request for appeal must be received within 60 days from the date of this letter. It is not necessary to submit a Request for Appeal if you do not object to the JD.

This JD is valid for a period of five years from the date of this letter, unless new information warrants revisions of the JDs before the expiration date, or unless the Corps has identified, after a possible public notice and comment, that specific geographic areas with rapidly changing environmental conditions merit re-verification on a more frequent basis.

If there are any questions please feel free to contact Matt Montgomery at (720) 922-3852 or by e-mail at [matthew.r.montgomery@usace.army.mil](mailto:matthew.r.montgomery@usace.army.mil), and reference **Corps File No. NWO-2021-01613-DEN**.

Sincerely,

A handwritten signature in black ink, appearing to read 'K. Downing', with a stylized flourish at the end.

Kiel Downing  
Chief, Denver Regulatory Office

Enclosure(s)

**APPROVED JURISDICTIONAL DETERMINATION FORM**  
**U.S. Army Corps of Engineers**

This form should be completed by following the instructions provided in Section IV of the JD Form Instructional Guidebook.

**SECTION I: BACKGROUND INFORMATION**

**A. REPORT COMPLETION DATE FOR APPROVED JURISDICTIONAL DETERMINATION (JD):** July 27, 2022

**B. DISTRICT OFFICE, FILE NAME, AND NUMBER:**

Denver Regulatory Office  
 State Highway 119 Mobility Improvements  
 NWO-2021-01613-DEN

**C. PROJECT LOCATION AND BACKGROUND INFORMATION:**

State: CO County/parish/borough: Boulder City: Longmont to Boulder  
 Center coordinates of site (lat/long in degree decimal format): Lat. 40.0892194° N, Long -105.1899500° W  
 Name of nearest waterbody: Dry Creek  
 Name of nearest Traditional Navigable Water (TNW) into which the aquatic resource flows: St. Vrain River  
 Name of watershed or Hydrologic Unit Code (HUC): 10190005

- Check if map/diagram of review area and/or potential jurisdictional areas is/are available upon request.  
 Check if other sites (e.g., offsite mitigation sites, disposal sites, etc...) are associated with this action and are recorded on a different JD form.

**D. REVIEW PERFORMED FOR SITE EVALUATION (CHECK ALL THAT APPLY):**

- Office (Desk) Determination. Date: July 27, 2022  
 Field Determination. Date(s): May 5, 2022

**SECTION II: SUMMARY OF FINDINGS**

**A. RHA SECTION 10 DETERMINATION OF JURISDICTION.**

There **Are no** "navigable waters of the U.S." within Rivers and Harbors Act (RHA) jurisdiction (as defined by 33 CFR part 329) in the review area. [Required]

- Waters subject to the ebb and flow of the tide.  
 Waters are presently used, or have been used in the past, or may be susceptible for use to transport interstate or foreign commerce. Explain: .

**B. CWA SECTION 404 DETERMINATION OF JURISDICTION.**

There **Are** "waters of the U.S." within Clean Water Act (CWA) jurisdiction (as defined by 33 CFR part 328) in the review area. [Required]

**1. Waters of the U.S.**

**a. Indicate presence of waters of U.S. in review area (check all that apply):** <sup>1</sup>

- TNWs, including territorial seas  
 Wetlands adjacent to TNWs  
 Relatively permanent waters<sup>2</sup> (RPWs) that flow directly or indirectly into TNWs  
 Non-RPWs that flow directly or indirectly into TNWs  
 Wetlands directly abutting RPWs that flow directly or indirectly into TNWs  
 Wetlands adjacent to but not directly abutting RPWs that flow directly or indirectly into TNWs  
 Wetlands adjacent to non-RPWs that flow directly or indirectly into TNWs  
 Impoundments of jurisdictional waters  
 Isolated (interstate or intrastate) waters, including isolated wetlands

**b. Identify (estimate) size of waters of the U.S. in the review area:** Dry Creek and abutting wetlands

Non-wetland waters: linear feet: ~ 400  
 Wetlands: Wetland 2-D-4 0.01 acre.

**c. Limits (boundaries) of jurisdiction based on:**

Elevation of established OHWM (if known): .

**2. Non-regulated waters/wetlands (check if applicable):**<sup>3</sup>

- Potentially jurisdictional waters and/or wetlands were assessed within the review area and determined to be not jurisdictional. Explain:

<sup>1</sup> Boxes checked below shall be supported by completing the appropriate sections in Section III below.

<sup>2</sup> For purposes of this form, an RPW is defined as a tributary that is not a TNW and that typically flows year-round or has continuous flow at least "seasonally" (e.g., typically 3 months).

<sup>3</sup> Supporting documentation is presented in Section III.F.

**SECTION III: CWA ANALYSIS****A. TNWs AND WETLANDS ADJACENT TO TNWs**

The agencies will assert jurisdiction over TNWs and wetlands adjacent to TNWs. If the aquatic resource is a TNW, complete Section III.A.1 and Section III.D.1. only; if the aquatic resource is a wetland adjacent to a TNW, complete Sections III.A.1 and 2 and Section III.D.1.; otherwise, see Section III.B below.

**1. TNW**

Identify TNW: .

Summarize rationale supporting determination: .

**2. Wetland adjacent to TNW**

Summarize rationale supporting conclusion that wetland is “adjacent”:

**B. CHARACTERISTICS OF TRIBUTARY (THAT IS NOT A TNW) AND ITS ADJACENT WETLANDS (IF ANY):**

This section summarizes information regarding characteristics of the tributary and its adjacent wetlands, if any, and it helps determine whether or not the standards for jurisdiction established under *Rapanos* have been met.

The agencies will assert jurisdiction over non-navigable tributaries of TNWs where the tributaries are “relatively permanent waters” (RPWs), i.e. tributaries that typically flow year-round or have continuous flow at least seasonally (e.g., typically 3 months). A wetland that directly abuts an RPW is also jurisdictional. If the aquatic resource is not a TNW, but has year-round (perennial) flow, skip to Section III.D.2. If the aquatic resource is a wetland directly abutting a tributary with perennial flow, skip to Section III.D.4.

A wetland that is adjacent to but that does not directly abut an RPW requires a significant nexus evaluation. Corps districts and EPA regions will include in the record any available information that documents the existence of a significant nexus between a relatively permanent tributary that is not perennial (and its adjacent wetlands if any) and a traditional navigable water, even though a significant nexus finding is not required as a matter of law.

If the waterbody<sup>4</sup> is not an RPW, or a wetland directly abutting an RPW, a JD will require additional data to determine if the waterbody has a significant nexus with a TNW. If the tributary has adjacent wetlands, the significant nexus evaluation must consider the tributary in combination with all of its adjacent wetlands. This significant nexus evaluation that combines, for analytical purposes, the tributary and all of its adjacent wetlands is used whether the review area identified in the JD request is the tributary, or its adjacent wetlands, or both. If the JD covers a tributary with adjacent wetlands, complete Section III.B.1 for the tributary, Section III.B.2 for any onsite wetlands, and Section III.B.3 for all wetlands adjacent to that tributary, both onsite and offsite. The determination whether a significant nexus exists is determined in Section III.C below.

**1. Characteristics of non-TNWs that flow directly or indirectly into TNW****(i) General Area Conditions:**

Watershed size: **Pick List**  
 Drainage area: **Pick List**  
 Average annual rainfall: inches  
 Average annual snowfall: inches

**(ii) Physical Characteristics:****(a) Relationship with TNW:**

- Tributary flows directly into TNW.  
 Tributary flows through **Pick List** tributaries before entering TNW.

Project waters are **Pick List** river miles from TNW.  
 Project waters are **Pick List** river miles from RPW.  
 Project waters are **Pick List** aerial (straight) miles from TNW.  
 Project waters are **Pick List** aerial (straight) miles from RPW.  
 Project waters cross or serve as state boundaries. Explain: .

<sup>4</sup> Note that the Instructional Guidebook contains additional information regarding swales, ditches, washes, and erosional features generally and in the arid West.

Identify flow route to TNW<sup>5</sup>:  
Tributary stream order, if known:

(b) **General Tributary Characteristics (check all that apply):**

**Tributary is:**  Natural  
 Artificial (man-made). Explain:  
 Manipulated (man-altered). Explain:

**Tributary properties with respect to top of bank (estimate):**

Average width: feet  
Average depth: feet  
Average side slopes: **Pick List**.

Primary tributary substrate composition (check all that apply):

Silts  Sands  Concrete  
 Cobbles  Gravel  Muck  
 Bedrock  Vegetation. Type/% cover:  
 Other. Explain:

Tributary condition/stability [e.g., highly eroding, sloughing banks]. Explain:

Presence of run/riffle/pool complexes. Explain:

Tributary geometry: **Pick List**

Tributary gradient (approximate average slope): %

(c) **Flow:**

Tributary provides for: **Pick List**

Estimate average number of flow events in review area/year: **Pick List**

Describe flow regime:

Other information on duration and volume:

Surface flow is: **Pick List**. Characteristics:

Subsurface flow: **Pick List**. Explain findings:

Dye (or other) test performed:

Tributary has (check all that apply):

Bed and banks  
 OHWM<sup>6</sup> (check all indicators that apply):  
 clear, natural line impressed on the bank  the presence of litter and debris  
 changes in the character of soil  destruction of terrestrial vegetation  
 shelving  the presence of wrack line  
 vegetation matted down, bent, or absent  sediment sorting  
 leaf litter disturbed or washed away  scour  
 sediment deposition  multiple observed or predicted flow events  
 water staining  abrupt change in plant community  
 other (list):  
 Discontinuous OHWM.<sup>7</sup> Explain:

If factors other than the OHWM were used to determine lateral extent of CWA jurisdiction:

High Tide Line indicated by:  Mean High Water Mark indicated by:  
 oil or scum line along shore objects  survey to available datum;  
 fine shell or debris deposits (foreshore)  physical markings;  
 physical markings/characteristics  vegetation lines/changes in vegetation types.  
 tidal gauges  
 other (list):

(iii) **Chemical Characteristics:**

Characterize tributary (e.g., water color is clear, discolored, oily film; water quality; general watershed characteristics, etc.). Explain:

<sup>5</sup> Flow route can be described by identifying, e.g., tributary a, which flows through the review area, to flow into tributary b, which then flows into TNW.

<sup>6</sup>A natural or man-made discontinuity in the OHWM does not necessarily sever jurisdiction (e.g., where the stream temporarily flows underground, or where the OHWM has been removed by development or agricultural practices). Where there is a break in the OHWM that is unrelated to the waterbody's flow regime (e.g., flow over a rock outcrop or through a culvert), the agencies will look for indicators of flow above and below the break.

<sup>7</sup>Ibid.

Identify specific pollutants, if known:

**(iv) Biological Characteristics. Channel supports (check all that apply):**

- Riparian corridor. Characteristics (type, average width):
- Wetland fringe. Characteristics:
- Habitat for:
- Federally Listed species. Explain findings:
- Fish/spawn areas. Explain findings:
- Other environmentally-sensitive species. Explain findings:
- Aquatic/wildlife diversity. Explain findings:

**2. Characteristics of wetlands adjacent to non-TNW that flow directly or indirectly into TNW**

**(i) Physical Characteristics:**

**(a) General Wetland Characteristics:**

Properties:

Wetland size: \_\_\_\_\_ acres

Wetland type. Explain:

Wetland quality. Explain:

Project wetlands cross or serve as state boundaries. Explain:

**(b) General Flow Relationship with Non-TNW:**

Flow is: **Pick List**. Explain:

Surface flow is: **Pick List**

Characteristics:

Subsurface flow: **Pick List**. Explain findings:

Dye (or other) test performed:

**(c) Wetland Adjacency Determination with Non-TNW:**

Directly abutting

Not directly abutting

Discrete wetland hydrologic connection. Explain:

Ecological connection. Explain:

Separated by berm/barrier. Explain:

**(d) Proximity (Relationship) to TNW**

Project wetlands are **Pick List** river miles from TNW.

Project waters are **Pick List** aerial (straight) miles from TNW.

Flow is from: **Pick List**.

Estimate approximate location of wetland as within the **Pick List** floodplain.

**(ii) Chemical Characteristics:**

Characterize wetland system (e.g., water color is clear, brown, oil film on surface; water quality; general watershed characteristics; etc.). Explain:

Identify specific pollutants, if known:

**(iii) Biological Characteristics. Wetland supports (check all that apply):**

- Riparian buffer. Characteristics (type, average width):
- Vegetation type/percent cover. Explain:
- Habitat for:
- Federally Listed species. Explain findings:
- Fish/spawn areas. Explain findings:
- Other environmentally-sensitive species. Explain findings:
- Aquatic/wildlife diversity. Explain findings:

**3. Characteristics of all wetlands adjacent to the tributary (if any)**

All wetland(s) being considered in the cumulative analysis: **Pick List**

Approximately ( ) acres in total are being considered in the cumulative analysis.

For each wetland, specify the following:

Directly abuts? (Y/N)

Size (in acres)

Directly abuts? (Y/N)

Size (in acres)

Summarize overall biological, chemical and physical functions being performed:

### C. SIGNIFICANT NEXUS DETERMINATION

A significant nexus analysis will assess the flow characteristics and functions of the tributary itself and the functions performed by any wetlands adjacent to the tributary to determine if they significantly affect the chemical, physical, and biological integrity of a TNW. For each of the following situations, a significant nexus exists if the tributary, in combination with all of its adjacent wetlands, has more than a speculative or insubstantial effect on the chemical, physical and/or biological integrity of a TNW. Considerations when evaluating significant nexus include, but are not limited to the volume, duration, and frequency of the flow of water in the tributary and its proximity to a TNW, and the functions performed by the tributary and all its adjacent wetlands. It is not appropriate to determine significant nexus based solely on any specific threshold of distance (e.g. between a tributary and its adjacent wetland or between a tributary and the TNW). Similarly, the fact an adjacent wetland lies within or outside of a floodplain is not solely determinative of significant nexus.

Draw connections between the features documented and the effects on the TNW, as identified in the *Rapanos* Guidance and discussed in the Instructional Guidebook. Factors to consider include, for example:

- Does the tributary, in combination with its adjacent wetlands (if any), have the capacity to carry pollutants or flood waters to TNWs, or to reduce the amount of pollutants or flood waters reaching a TNW?
- Does the tributary, in combination with its adjacent wetlands (if any), provide habitat and lifecycle support functions for fish and other species, such as feeding, nesting, spawning, or rearing young for species that are present in the TNW?
- Does the tributary, in combination with its adjacent wetlands (if any), have the capacity to transfer nutrients and organic carbon that support downstream foodwebs?
- Does the tributary, in combination with its adjacent wetlands (if any), have other relationships to the physical, chemical, or biological integrity of the TNW?

**Note: the above list of considerations is not inclusive and other functions observed or known to occur should be documented below:**

1. **Significant nexus findings for non-RPW that has no adjacent wetlands and flows directly or indirectly into TNWs.** Explain findings of presence or absence of significant nexus below, based on the tributary itself, then go to Section III.D:
2. **Significant nexus findings for non-RPW and its adjacent wetlands, where the non-RPW flows directly or indirectly into TNWs.** Explain findings of presence or absence of significant nexus below, based on the tributary in combination with all of its adjacent wetlands, then go to Section III.D:
3. **Significant nexus findings for wetlands adjacent to an RPW but that do not directly abut the RPW.** Explain findings of presence or absence of significant nexus below, based on the tributary in combination with all of its adjacent wetlands, then go to Section III.D:

### D. DETERMINATIONS OF JURISDICTIONAL FINDINGS. THE SUBJECT WATERS/WETLANDS ARE (CHECK ALL THAT APPLY):

1. **TNWs and Adjacent Wetlands.** Check all that apply and provide size estimates in review area:
  - TNWs:           linear feet           width (ft), Or,           acres.
  - Wetlands adjacent to TNWs:           acres.
2. **RPWs that flow directly or indirectly into TNWs.**
  - Tributaries of TNWs where tributaries typically flow year-round are jurisdictional. Provide data and rationale indicating that tributary is perennial:
  - Tributaries of TNW where tributaries have continuous flow "seasonally" (e.g., typically three months each year) are jurisdictional. Data supporting this conclusion is provided at Section III.B. Provide rationale indicating that tributary flows seasonally: **Diversion records from Boulder Reservoir indicate flows are released into Dry Creek during most of the year. Flow are relatively permanent, at a minimum.**

Provide estimates for jurisdictional waters in the review area (check all that apply):

  - Tributary waters: ~400 linear feet
  - Other non-wetland waters:           acres.

Identify type(s) of waters:

3. **Non-RPWs<sup>8</sup> that flow directly or indirectly into TNWs.**

<sup>8</sup>See Footnote # 3.

- Waterbody that is not a TNW or an RPW, but flows directly or indirectly into a TNW, and it has a significant nexus with a TNW is jurisdictional. Data supporting this conclusion is provided at Section III.C.

Provide estimates for jurisdictional waters within the review area (check all that apply):

- Tributary waters:            linear feet            width (ft).  
 Other non-wetland waters:            acres.  
 Identify type(s) of waters:            .

**4. Wetlands directly abutting an RPW that flow directly or indirectly into TNWs.**

- Wetlands directly abut RPW and thus are jurisdictional as adjacent wetlands.  
 Wetlands directly abutting an RPW where tributaries typically flow year-round. Provide data and rationale indicating that tributary is perennial in Section III.D.2, above. Provide rationale indicating that wetland is directly abutting an RPW: **Wetland 2-D-4 is directly surface connected to the OHWM.**  
 Wetlands directly abutting an RPW where tributaries typically flow "seasonally." Provide data indicating that tributary is seasonal in Section III.B and rationale in Section III.D.2, above. Provide rationale indicating that wetland is directly abutting an RPW:            .

Provide acreage estimates for jurisdictional wetlands in the review area: **0.01** acre.

**5. Wetlands adjacent to but not directly abutting an RPW that flow directly or indirectly into TNWs.**

- Wetlands that do not directly abut an RPW, but when considered in combination with the tributary to which they are adjacent and with similarly situated adjacent wetlands, have a significant nexus with a TNW are jurisdictional. Data supporting this conclusion is provided at Section III.C.

Provide acreage estimates for jurisdictional wetlands in the review area:            acres.

**6. Wetlands adjacent to non-RPWs that flow directly or indirectly into TNWs.**

- Wetlands adjacent to such waters, and have when considered in combination with the tributary to which they are adjacent and with similarly situated adjacent wetlands, have a significant nexus with a TNW are jurisdictional. Data supporting this conclusion is provided at Section III.C.

Provide estimates for jurisdictional wetlands in the review area:            acres.

**7. Impoundments of jurisdictional waters.<sup>9</sup>**

As a general rule, the impoundment of a jurisdictional tributary remains jurisdictional.

- Demonstrate that impoundment was created from "waters of the U.S.," or  
 Demonstrate that water meets the criteria for one of the categories presented above (1-6), or  
 Demonstrate that water is isolated with a nexus to commerce (see E below).

**E. ISOLATED [INTERSTATE OR INTRA-STATE] WATERS, INCLUDING ISOLATED WETLANDS, THE USE, DEGRADATION OR DESTRUCTION OF WHICH COULD AFFECT INTERSTATE COMMERCE, INCLUDING ANY SUCH WATERS (CHECK ALL THAT APPLY):<sup>10</sup>**

- which are or could be used by interstate or foreign travelers for recreational or other purposes.  
 from which fish or shellfish are or could be taken and sold in interstate or foreign commerce.  
 which are or could be used for industrial purposes by industries in interstate commerce.  
 Interstate isolated waters. Explain:            .  
 Other factors. Explain:            .

**Identify water body and summarize rationale supporting determination:**            .

Provide estimates for jurisdictional waters in the review area (check all that apply):

- Tributary waters:            linear feet            width (ft).  
 Other non-wetland waters:            acres.  
 Identify type(s) of waters:            .  
 Wetlands:            acres.

**F. NON-JURISDICTIONAL WATERS, INCLUDING WETLANDS (CHECK ALL THAT APPLY):**

- If potential wetlands were assessed within the review area, these areas did not meet the criteria in the 1987 Corps of Engineers Wetland Delineation Manual and/or appropriate Regional Supplements.

<sup>9</sup> To complete the analysis refer to the key in Section III.D.6 of the Instructional Guidebook.

<sup>10</sup> Prior to asserting or declining CWA jurisdiction based solely on this category, Corps Districts will elevate the action to Corps and EPA HQ for review consistent with the process described in the Corps/EPA Memorandum Regarding CWA Act Jurisdiction Following Rapanos.



- Review area included isolated waters with no substantial nexus to interstate (or foreign) commerce.  
 Prior to the Jan 2001 Supreme Court decision in "SWANCC," the review area would have been regulated based solely on the "Migratory Bird Rule" (MBR).
- Waters do not meet the "Significant Nexus" standard, where such a finding is required for jurisdiction. Explain: \_\_\_\_\_
- Other: (explain, if not covered above): \_\_\_\_\_

Provide acreage estimates for non-jurisdictional waters in the review area, where the sole potential basis of jurisdiction is the MBR factors (i.e., presence of migratory birds, presence of endangered species, use of water for irrigated agriculture), using best professional judgment (check all that apply):

- Non-wetland waters (i.e., rivers, streams): \_\_\_\_\_ linear feet \_\_\_\_\_ width (ft).  
 Lakes/ponds: \_\_\_\_\_ acres.  
 Other non-wetland waters: \_\_\_\_\_ acres. List type of aquatic resource: \_\_\_\_\_  
 Wetlands: \_\_\_\_\_ acres.

Provide acreage estimates for non-jurisdictional waters in the review area that do not meet the "Significant Nexus" standard, where such a finding is required for jurisdiction (check all that apply):

- Non-wetland waters (i.e., rivers, streams): \_\_\_\_\_ linear feet, \_\_\_\_\_ width (ft).  
 Lakes/ponds: \_\_\_\_\_ acres.  
 Other non-wetland waters: \_\_\_\_\_ acres. List type of aquatic resource: \_\_\_\_\_  
 Wetlands: \_\_\_\_\_ acres.

#### **SECTION IV: DATA SOURCES.**

##### **A. SUPPORTING DATA. Data reviewed for JD (check all that apply - checked items shall be included in case file and, where checked and requested, appropriately reference sources below):**

- Maps, plans, plots or plat submitted by or on behalf of the applicant/consultant: **Wetlands/Waters of the U.S. Delineation Report for State Highway 119 Mobility Improvements, Boulder County, CDOT, dated September 8, 2021.**
- Data sheets prepared/submitted by or on behalf of the applicant/consultant.  
 Office concurs with data sheets/delineation report.  
 Office does not concur with data sheets/delineation report.
- Data sheets prepared by the Corps: \_\_\_\_\_
- Corps navigable waters' study: \_\_\_\_\_
- U.S. Geological Survey Hydrologic Atlas: \_\_\_\_\_  
 USGS NHD data.  
 USGS 8 and 12 digit HUC maps.
- U.S. Geological Survey map(s). Cite scale & quad name: \_\_\_\_\_
- USDA Natural Resources Conservation Service Soil Survey. Citation: \_\_\_\_\_
- National wetlands inventory map(s). Cite name: \_\_\_\_\_
- State/Local wetland inventory map(s): \_\_\_\_\_
- FEMA/FIRM maps:  
 100-year Floodplain Elevation is: \_\_\_\_\_ (National Geodetic Vertical Datum of 1929)
- Photographs:  Aerial (Name & Date): \_\_\_\_\_  
or  Other (Name & Date): \_\_\_\_\_
- Previous determination(s). File no. and date of response letter: \_\_\_\_\_
- Applicable/supporting case law: \_\_\_\_\_
- Applicable/supporting scientific literature: \_\_\_\_\_
- Other information (please specify): \_\_\_\_\_

##### **B. ADDITIONAL COMMENTS TO SUPPORT JD:**

**APPROVED JURISDICTIONAL DETERMINATION FORM**  
**U.S. Army Corps of Engineers**

This form should be completed by following the instructions provided in Section IV of the JD Form Instructional Guidebook.

**SECTION I: BACKGROUND INFORMATION**

**A. REPORT COMPLETION DATE FOR APPROVED JURISDICTIONAL DETERMINATION (JD):** July 27, 2022

**B. DISTRICT OFFICE, FILE NAME, AND NUMBER:**

Denver Regulatory Office  
 State Highway 119 Mobility Improvements  
 NWO-2021-01613-DEN

**C. PROJECT LOCATION AND BACKGROUND INFORMATION:**

State: CO County/parish/borough: Boulder City: Longmont to Boulder  
 Center coordinates of site (lat/long in degree decimal format): Lat. 40.0892194° N, Long -105.1899500° W  
 Name of nearest waterbody: Fourmile Canyon Creek  
 Name of nearest Traditional Navigable Water (TNW) into which the aquatic resource flows: St. Vrain River  
 Name of watershed or Hydrologic Unit Code (HUC): 10190005

- Check if map/diagram of review area and/or potential jurisdictional areas is/are available upon request.  
 Check if other sites (e.g., offsite mitigation sites, disposal sites, etc...) are associated with this action and are recorded on a different JD form.

**D. REVIEW PERFORMED FOR SITE EVALUATION (CHECK ALL THAT APPLY):**

- Office (Desk) Determination. Date: July 27, 2022  
 Field Determination. Date(s): May 5, 2022

**SECTION II: SUMMARY OF FINDINGS**

**A. RHA SECTION 10 DETERMINATION OF JURISDICTION.**

There **Are no** "navigable waters of the U.S." within Rivers and Harbors Act (RHA) jurisdiction (as defined by 33 CFR part 329) in the review area. [Required]

- Waters subject to the ebb and flow of the tide.  
 Waters are presently used, or have been used in the past, or may be susceptible for use to transport interstate or foreign commerce. Explain: .

**B. CWA SECTION 404 DETERMINATION OF JURISDICTION.**

There **Are** "waters of the U.S." within Clean Water Act (CWA) jurisdiction (as defined by 33 CFR part 328) in the review area. [Required]

**1. Waters of the U.S.**

**a. Indicate presence of waters of U.S. in review area (check all that apply):** <sup>1</sup>

- TNWs, including territorial seas  
 Wetlands adjacent to TNWs  
 Relatively permanent waters<sup>2</sup> (RPWs) that flow directly or indirectly into TNWs  
 Non-RPWs that flow directly or indirectly into TNWs  
 Wetlands directly abutting RPWs that flow directly or indirectly into TNWs  
 Wetlands adjacent to but not directly abutting RPWs that flow directly or indirectly into TNWs  
 Wetlands adjacent to non-RPWs that flow directly or indirectly into TNWs  
 Impoundments of jurisdictional waters  
 Isolated (interstate or intrastate) waters, including isolated wetlands

**b. Identify (estimate) size of waters of the U.S. in the review area:** Fourmile Canyon Creek and abutting wetlands

Non-wetland waters: linear feet: ~ 625  
 Wetlands: Wetland 3-D-4: 0.2 acre.

**c. Limits (boundaries) of jurisdiction based on:**

Elevation of established OHWM (if known): .

**2. Non-regulated waters/wetlands (check if applicable):**<sup>3</sup>

- Potentially jurisdictional waters and/or wetlands were assessed within the review area and determined to be not jurisdictional. Explain:

<sup>1</sup> Boxes checked below shall be supported by completing the appropriate sections in Section III below.

<sup>2</sup> For purposes of this form, an RPW is defined as a tributary that is not a TNW and that typically flows year-round or has continuous flow at least "seasonally" (e.g., typically 3 months).

<sup>3</sup> Supporting documentation is presented in Section III.F.

**SECTION III: CWA ANALYSIS****A. TNWs AND WETLANDS ADJACENT TO TNWs**

The agencies will assert jurisdiction over TNWs and wetlands adjacent to TNWs. If the aquatic resource is a TNW, complete Section III.A.1 and Section III.D.1. only; if the aquatic resource is a wetland adjacent to a TNW, complete Sections III.A.1 and 2 and Section III.D.1.; otherwise, see Section III.B below.

**1. TNW**

Identify TNW: .

Summarize rationale supporting determination: .

**2. Wetland adjacent to TNW**

Summarize rationale supporting conclusion that wetland is “adjacent”:

**B. CHARACTERISTICS OF TRIBUTARY (THAT IS NOT A TNW) AND ITS ADJACENT WETLANDS (IF ANY):**

This section summarizes information regarding characteristics of the tributary and its adjacent wetlands, if any, and it helps determine whether or not the standards for jurisdiction established under *Rapanos* have been met.

The agencies will assert jurisdiction over non-navigable tributaries of TNWs where the tributaries are “relatively permanent waters” (RPWs), i.e. tributaries that typically flow year-round or have continuous flow at least seasonally (e.g., typically 3 months). A wetland that directly abuts an RPW is also jurisdictional. If the aquatic resource is not a TNW, but has year-round (perennial) flow, skip to Section III.D.2. If the aquatic resource is a wetland directly abutting a tributary with perennial flow, skip to Section III.D.4.

A wetland that is adjacent to but that does not directly abut an RPW requires a significant nexus evaluation. Corps districts and EPA regions will include in the record any available information that documents the existence of a significant nexus between a relatively permanent tributary that is not perennial (and its adjacent wetlands if any) and a traditional navigable water, even though a significant nexus finding is not required as a matter of law.

If the waterbody<sup>4</sup> is not an RPW, or a wetland directly abutting an RPW, a JD will require additional data to determine if the waterbody has a significant nexus with a TNW. If the tributary has adjacent wetlands, the significant nexus evaluation must consider the tributary in combination with all of its adjacent wetlands. This significant nexus evaluation that combines, for analytical purposes, the tributary and all of its adjacent wetlands is used whether the review area identified in the JD request is the tributary, or its adjacent wetlands, or both. If the JD covers a tributary with adjacent wetlands, complete Section III.B.1 for the tributary, Section III.B.2 for any onsite wetlands, and Section III.B.3 for all wetlands adjacent to that tributary, both onsite and offsite. The determination whether a significant nexus exists is determined in Section III.C below.

**1. Characteristics of non-TNWs that flow directly or indirectly into TNW****(i) General Area Conditions:**

Watershed size: **Pick List**  
 Drainage area: **Pick List**  
 Average annual rainfall: inches  
 Average annual snowfall: inches

**(ii) Physical Characteristics:****(a) Relationship with TNW:**

- Tributary flows directly into TNW.  
 Tributary flows through **Pick List** tributaries before entering TNW.

Project waters are **Pick List** river miles from TNW.  
 Project waters are **Pick List** river miles from RPW.  
 Project waters are **Pick List** aerial (straight) miles from TNW.  
 Project waters are **Pick List** aerial (straight) miles from RPW.  
 Project waters cross or serve as state boundaries. Explain: .

<sup>4</sup> Note that the Instructional Guidebook contains additional information regarding swales, ditches, washes, and erosional features generally and in the arid West.

Identify flow route to TNW<sup>5</sup>:  
Tributary stream order, if known:

(b) **General Tributary Characteristics (check all that apply):**

**Tributary is:**  Natural  
 Artificial (man-made). Explain:  
 Manipulated (man-altered). Explain:

**Tributary properties with respect to top of bank (estimate):**

Average width: feet  
Average depth: feet  
Average side slopes: **Pick List**.

**Primary tributary substrate composition (check all that apply):**

Silts  Sands  Concrete  
 Cobbles  Gravel  Muck  
 Bedrock  Vegetation. Type/% cover:  
 Other. Explain:

Tributary condition/stability [e.g., highly eroding, sloughing banks]. Explain:

Presence of run/riffle/pool complexes. Explain:

Tributary geometry: **Pick List**

Tributary gradient (approximate average slope): %

(c) **Flow:**

Tributary provides for: **Pick List**

Estimate average number of flow events in review area/year: **Pick List**

Describe flow regime:

Other information on duration and volume:

Surface flow is: **Pick List**. Characteristics:

Subsurface flow: **Pick List**. Explain findings:

Dye (or other) test performed:

Tributary has (check all that apply):

Bed and banks  
 OHWM<sup>6</sup> (check all indicators that apply):  
 clear, natural line impressed on the bank  the presence of litter and debris  
 changes in the character of soil  destruction of terrestrial vegetation  
 shelving  the presence of wrack line  
 vegetation matted down, bent, or absent  sediment sorting  
 leaf litter disturbed or washed away  scour  
 sediment deposition  multiple observed or predicted flow events  
 water staining  abrupt change in plant community  
 other (list):  
 Discontinuous OHWM.<sup>7</sup> Explain:

If factors other than the OHWM were used to determine lateral extent of CWA jurisdiction:

High Tide Line indicated by:  Mean High Water Mark indicated by:  
 oil or scum line along shore objects  survey to available datum;  
 fine shell or debris deposits (foreshore)  physical markings;  
 physical markings/characteristics  vegetation lines/changes in vegetation types.  
 tidal gauges  
 other (list):

(iii) **Chemical Characteristics:**

Characterize tributary (e.g., water color is clear, discolored, oily film; water quality; general watershed characteristics, etc.). Explain:

<sup>5</sup> Flow route can be described by identifying, e.g., tributary a, which flows through the review area, to flow into tributary b, which then flows into TNW.

<sup>6</sup>A natural or man-made discontinuity in the OHWM does not necessarily sever jurisdiction (e.g., where the stream temporarily flows underground, or where the OHWM has been removed by development or agricultural practices). Where there is a break in the OHWM that is unrelated to the waterbody's flow regime (e.g., flow over a rock outcrop or through a culvert), the agencies will look for indicators of flow above and below the break.

<sup>7</sup>Ibid.

Identify specific pollutants, if known:

**(iv) Biological Characteristics. Channel supports (check all that apply):**

- Riparian corridor. Characteristics (type, average width):
- Wetland fringe. Characteristics:
- Habitat for:
  - Federally Listed species. Explain findings:
  - Fish/spawn areas. Explain findings:
  - Other environmentally-sensitive species. Explain findings:
  - Aquatic/wildlife diversity. Explain findings:

**2. Characteristics of wetlands adjacent to non-TNW that flow directly or indirectly into TNW**

**(i) Physical Characteristics:**

**(a) General Wetland Characteristics:**

Properties:

Wetland size: \_\_\_\_\_ acres

Wetland type. Explain:

Wetland quality. Explain:

Project wetlands cross or serve as state boundaries. Explain:

**(b) General Flow Relationship with Non-TNW:**

Flow is: **Pick List**. Explain:

Surface flow is: **Pick List**

Characteristics:

Subsurface flow: **Pick List**. Explain findings:

Dye (or other) test performed:

**(c) Wetland Adjacency Determination with Non-TNW:**

- Directly abutting
- Not directly abutting
  - Discrete wetland hydrologic connection. Explain:
  - Ecological connection. Explain:
  - Separated by berm/barrier. Explain:

**(d) Proximity (Relationship) to TNW**

Project wetlands are **Pick List** river miles from TNW.

Project waters are **Pick List** aerial (straight) miles from TNW.

Flow is from: **Pick List**.

Estimate approximate location of wetland as within the **Pick List** floodplain.

**(ii) Chemical Characteristics:**

Characterize wetland system (e.g., water color is clear, brown, oil film on surface; water quality; general watershed characteristics; etc.). Explain:

Identify specific pollutants, if known:

**(iii) Biological Characteristics. Wetland supports (check all that apply):**

- Riparian buffer. Characteristics (type, average width):
- Vegetation type/percent cover. Explain:
- Habitat for:
  - Federally Listed species. Explain findings:
  - Fish/spawn areas. Explain findings:
  - Other environmentally-sensitive species. Explain findings:
  - Aquatic/wildlife diversity. Explain findings:

**3. Characteristics of all wetlands adjacent to the tributary (if any)**

All wetland(s) being considered in the cumulative analysis: **Pick List**

Approximately ( ) acres in total are being considered in the cumulative analysis.

For each wetland, specify the following:

Directly abuts? (Y/N)

Size (in acres)

Directly abuts? (Y/N)

Size (in acres)

Summarize overall biological, chemical and physical functions being performed:

### C. SIGNIFICANT NEXUS DETERMINATION

A significant nexus analysis will assess the flow characteristics and functions of the tributary itself and the functions performed by any wetlands adjacent to the tributary to determine if they significantly affect the chemical, physical, and biological integrity of a TNW. For each of the following situations, a significant nexus exists if the tributary, in combination with all of its adjacent wetlands, has more than a speculative or insubstantial effect on the chemical, physical and/or biological integrity of a TNW. Considerations when evaluating significant nexus include, but are not limited to the volume, duration, and frequency of the flow of water in the tributary and its proximity to a TNW, and the functions performed by the tributary and all its adjacent wetlands. It is not appropriate to determine significant nexus based solely on any specific threshold of distance (e.g. between a tributary and its adjacent wetland or between a tributary and the TNW). Similarly, the fact an adjacent wetland lies within or outside of a floodplain is not solely determinative of significant nexus.

Draw connections between the features documented and the effects on the TNW, as identified in the *Rapanos* Guidance and discussed in the Instructional Guidebook. Factors to consider include, for example:

- Does the tributary, in combination with its adjacent wetlands (if any), have the capacity to carry pollutants or flood waters to TNWs, or to reduce the amount of pollutants or flood waters reaching a TNW?
- Does the tributary, in combination with its adjacent wetlands (if any), provide habitat and lifecycle support functions for fish and other species, such as feeding, nesting, spawning, or rearing young for species that are present in the TNW?
- Does the tributary, in combination with its adjacent wetlands (if any), have the capacity to transfer nutrients and organic carbon that support downstream foodwebs?
- Does the tributary, in combination with its adjacent wetlands (if any), have other relationships to the physical, chemical, or biological integrity of the TNW?

**Note: the above list of considerations is not inclusive and other functions observed or known to occur should be documented below:**

1. **Significant nexus findings for non-RPW that has no adjacent wetlands and flows directly or indirectly into TNWs.** Explain findings of presence or absence of significant nexus below, based on the tributary itself, then go to Section III.D:
2. **Significant nexus findings for non-RPW and its adjacent wetlands, where the non-RPW flows directly or indirectly into TNWs.** Explain findings of presence or absence of significant nexus below, based on the tributary in combination with all of its adjacent wetlands, then go to Section III.D:
3. **Significant nexus findings for wetlands adjacent to an RPW but that do not directly abut the RPW.** Explain findings of presence or absence of significant nexus below, based on the tributary in combination with all of its adjacent wetlands, then go to Section III.D:

### D. DETERMINATIONS OF JURISDICTIONAL FINDINGS. THE SUBJECT WATERS/WETLANDS ARE (CHECK ALL THAT APPLY):

1. **TNWs and Adjacent Wetlands.** Check all that apply and provide size estimates in review area:
  - TNWs:            linear feet            width (ft), Or,            acres.
  - Wetlands adjacent to TNWs:            acres.
2. **RPWs that flow directly or indirectly into TNWs.**
  - Tributaries of TNWs where tributaries typically flow year-round are jurisdictional. Provide data and rationale indicating that tributary is perennial:
  - Tributaries of TNW where tributaries have continuous flow "seasonally" (e.g., typically three months each year) are jurisdictional. Data supporting this conclusion is provided at Section III.B. Provide rationale indicating that tributary flows seasonally: **USGS gage 06730160, which only operates from April to September, indicates flows are present from beginning of April to end of September annually, and may be present beyond that date range but are not captured. Flow is relatively permanent, at a minimum.**

Provide estimates for jurisdictional waters in the review area (check all that apply):

- Tributary waters: ~400 linear feet
  - Other non-wetland waters:            acres.
- Identify type(s) of waters:

3. **Non-RPWs<sup>8</sup> that flow directly or indirectly into TNWs.**

<sup>8</sup>See Footnote # 3.

- Waterbody that is not a TNW or an RPW, but flows directly or indirectly into a TNW, and it has a significant nexus with a TNW is jurisdictional. Data supporting this conclusion is provided at Section III.C.

Provide estimates for jurisdictional waters within the review area (check all that apply):

- Tributary waters:            linear feet            width (ft).  
 Other non-wetland waters:            acres.  
 Identify type(s) of waters:            .

**4. Wetlands directly abutting an RPW that flow directly or indirectly into TNWs.**

- Wetlands directly abut RPW and thus are jurisdictional as adjacent wetlands.  
 Wetlands directly abutting an RPW where tributaries typically flow year-round. Provide data and rationale indicating that tributary is perennial in Section III.D.2, above. Provide rationale indicating that wetland is directly abutting an RPW: **Wetland 3-D-4 is directly surface connected to the OHWM.**  
 Wetlands directly abutting an RPW where tributaries typically flow "seasonally." Provide data indicating that tributary is seasonal in Section III.B and rationale in Section III.D.2, above. Provide rationale indicating that wetland is directly abutting an RPW:            .

Provide acreage estimates for jurisdictional wetlands in the review area: **0.02** acre.

**5. Wetlands adjacent to but not directly abutting an RPW that flow directly or indirectly into TNWs.**

- Wetlands that do not directly abut an RPW, but when considered in combination with the tributary to which they are adjacent and with similarly situated adjacent wetlands, have a significant nexus with a TNW are jurisdictional. Data supporting this conclusion is provided at Section III.C.

Provide acreage estimates for jurisdictional wetlands in the review area:            acres.

**6. Wetlands adjacent to non-RPWs that flow directly or indirectly into TNWs.**

- Wetlands adjacent to such waters, and have when considered in combination with the tributary to which they are adjacent and with similarly situated adjacent wetlands, have a significant nexus with a TNW are jurisdictional. Data supporting this conclusion is provided at Section III.C.

Provide estimates for jurisdictional wetlands in the review area:            acres.

**7. Impoundments of jurisdictional waters.<sup>9</sup>**

As a general rule, the impoundment of a jurisdictional tributary remains jurisdictional.

- Demonstrate that impoundment was created from "waters of the U.S.," or  
 Demonstrate that water meets the criteria for one of the categories presented above (1-6), or  
 Demonstrate that water is isolated with a nexus to commerce (see E below).

**E. ISOLATED [INTERSTATE OR INTRA-STATE] WATERS, INCLUDING ISOLATED WETLANDS, THE USE, DEGRADATION OR DESTRUCTION OF WHICH COULD AFFECT INTERSTATE COMMERCE, INCLUDING ANY SUCH WATERS (CHECK ALL THAT APPLY):<sup>10</sup>**

- which are or could be used by interstate or foreign travelers for recreational or other purposes.  
 from which fish or shellfish are or could be taken and sold in interstate or foreign commerce.  
 which are or could be used for industrial purposes by industries in interstate commerce.  
 Interstate isolated waters. Explain:            .  
 Other factors. Explain:            .

**Identify water body and summarize rationale supporting determination:**            .

Provide estimates for jurisdictional waters in the review area (check all that apply):

- Tributary waters:            linear feet            width (ft).  
 Other non-wetland waters:            acres.  
 Identify type(s) of waters:            .  
 Wetlands:            acres.

**F. NON-JURISDICTIONAL WATERS, INCLUDING WETLANDS (CHECK ALL THAT APPLY):**

- If potential wetlands were assessed within the review area, these areas did not meet the criteria in the 1987 Corps of Engineers Wetland Delineation Manual and/or appropriate Regional Supplements.

<sup>9</sup> To complete the analysis refer to the key in Section III.D.6 of the Instructional Guidebook.

<sup>10</sup> Prior to asserting or declining CWA jurisdiction based solely on this category, Corps Districts will elevate the action to Corps and EPA HQ for review consistent with the process described in the Corps/EPA Memorandum Regarding CWA Act Jurisdiction Following *Rapanos*.

- Review area included isolated waters with no substantial nexus to interstate (or foreign) commerce.  
 Prior to the Jan 2001 Supreme Court decision in "SWANCC," the review area would have been regulated based solely on the "Migratory Bird Rule" (MBR).
- Waters do not meet the "Significant Nexus" standard, where such a finding is required for jurisdiction. Explain: \_\_\_\_\_
- Other: (explain, if not covered above): \_\_\_\_\_

Provide acreage estimates for non-jurisdictional waters in the review area, where the sole potential basis of jurisdiction is the MBR factors (i.e., presence of migratory birds, presence of endangered species, use of water for irrigated agriculture), using best professional judgment (check all that apply):

- Non-wetland waters (i.e., rivers, streams): \_\_\_\_\_ linear feet \_\_\_\_\_ width (ft).  
 Lakes/ponds: \_\_\_\_\_ acres.  
 Other non-wetland waters: \_\_\_\_\_ acres. List type of aquatic resource: \_\_\_\_\_  
 Wetlands: \_\_\_\_\_ acres.

Provide acreage estimates for non-jurisdictional waters in the review area that do not meet the "Significant Nexus" standard, where such a finding is required for jurisdiction (check all that apply):

- Non-wetland waters (i.e., rivers, streams): \_\_\_\_\_ linear feet, \_\_\_\_\_ width (ft).  
 Lakes/ponds: \_\_\_\_\_ acres.  
 Other non-wetland waters: \_\_\_\_\_ acres. List type of aquatic resource: \_\_\_\_\_  
 Wetlands: \_\_\_\_\_ acres.

#### **SECTION IV: DATA SOURCES.**

##### **A. SUPPORTING DATA. Data reviewed for JD (check all that apply - checked items shall be included in case file and, where checked and requested, appropriately reference sources below):**

- Maps, plans, plots or plat submitted by or on behalf of the applicant/consultant: **Wetlands/Waters of the U.S. Delineation Report for State Highway 119 Mobility Improvements, Boulder County, CDOT, dated September 8, 2021.**
- Data sheets prepared/submitted by or on behalf of the applicant/consultant.  
 Office concurs with data sheets/delineation report.  
 Office does not concur with data sheets/delineation report.
- Data sheets prepared by the Corps: \_\_\_\_\_
- Corps navigable waters' study: \_\_\_\_\_
- U.S. Geological Survey Hydrologic Atlas: \_\_\_\_\_  
 USGS NHD data.  
 USGS 8 and 12 digit HUC maps.
- U.S. Geological Survey map(s). Cite scale & quad name: \_\_\_\_\_
- USDA Natural Resources Conservation Service Soil Survey. Citation: \_\_\_\_\_
- National wetlands inventory map(s). Cite name: \_\_\_\_\_
- State/Local wetland inventory map(s): \_\_\_\_\_
- FEMA/FIRM maps:  
 100-year Floodplain Elevation is: \_\_\_\_\_ (National Geodetic Vertical Datum of 1929)
- Photographs:  Aerial (Name & Date): \_\_\_\_\_  
or  Other (Name & Date): \_\_\_\_\_
- Previous determination(s). File no. and date of response letter: \_\_\_\_\_
- Applicable/supporting case law: \_\_\_\_\_
- Applicable/supporting scientific literature: \_\_\_\_\_
- Other information (please specify): \_\_\_\_\_

##### **B. ADDITIONAL COMMENTS TO SUPPORT JD:**



**APPROVED JURISDICTIONAL DETERMINATION FORM**  
**U.S. Army Corps of Engineers**

This form should be completed by following the instructions provided in Section IV of the JD Form Instructional Guidebook.

**SECTION I: BACKGROUND INFORMATION**

**A. REPORT COMPLETION DATE FOR APPROVED JURISDICTIONAL DETERMINATION (JD):** July 27, 2022

**B. DISTRICT OFFICE, FILE NAME, AND NUMBER:**

Denver Regulatory Office  
 State Highway 119 Mobility Improvements  
 NWO-2021-01613-DEN

**C. PROJECT LOCATION AND BACKGROUND INFORMATION:**

State: CO County/parish/borough: Boulder City: Longmont to Boulder  
 Center coordinates of site (lat/long in degree decimal format): Lat. 40.0892194° N, Long -105.1899500° W  
 Name of nearest waterbody: Little Dry Creek (2-D-6/3-A-1)  
 Name of nearest Traditional Navigable Water (TNW) into which the aquatic resource flows: St. Vrain River  
 Name of watershed or Hydrologic Unit Code (HUC): 10190005

- Check if map/diagram of review area and/or potential jurisdictional areas is/are available upon request.  
 Check if other sites (e.g., offsite mitigation sites, disposal sites, etc...) are associated with this action and are recorded on a different JD form.

**D. REVIEW PERFORMED FOR SITE EVALUATION (CHECK ALL THAT APPLY):**

- Office (Desk) Determination. Date: July 27, 2022  
 Field Determination. Date(s): May 5, 2022

**SECTION II: SUMMARY OF FINDINGS**

**A. RHA SECTION 10 DETERMINATION OF JURISDICTION.**

There **Are no** "navigable waters of the U.S." within Rivers and Harbors Act (RHA) jurisdiction (as defined by 33 CFR part 329) in the review area. [Required]

- Waters subject to the ebb and flow of the tide.  
 Waters are presently used, or have been used in the past, or may be susceptible for use to transport interstate or foreign commerce. Explain: .

**B. CWA SECTION 404 DETERMINATION OF JURISDICTION.**

There **Are** "waters of the U.S." within Clean Water Act (CWA) jurisdiction (as defined by 33 CFR part 328) in the review area. [Required]

**1. Waters of the U.S.**

**a. Indicate presence of waters of U.S. in review area (check all that apply):** <sup>1</sup>

- TNWs, including territorial seas  
 Wetlands adjacent to TNWs  
 Relatively permanent waters<sup>2</sup> (RPWs) that flow directly or indirectly into TNWs  
 Non-RPWs that flow directly or indirectly into TNWs  
 Wetlands directly abutting RPWs that flow directly or indirectly into TNWs  
 Wetlands adjacent to but not directly abutting RPWs that flow directly or indirectly into TNWs  
 Wetlands adjacent to non-RPWs that flow directly or indirectly into TNWs  
 Impoundments of jurisdictional waters  
 Isolated (interstate or intrastate) waters, including isolated wetlands

**b. Identify (estimate) size of waters of the U.S. in the review area:** Little Dry Creek (2-D-6/3-A-1)

Non-wetland waters: linear feet: ~ 400  
 Wetlands: Wetland 2-D-5 0.07 acre.

**c. Limits (boundaries) of jurisdiction based on:**

Elevation of established OHWM (if known): .

**2. Non-regulated waters/wetlands (check if applicable):**<sup>3</sup>

- Potentially jurisdictional waters and/or wetlands were assessed within the review area and determined to be not jurisdictional. Explain:

<sup>1</sup> Boxes checked below shall be supported by completing the appropriate sections in Section III below.

<sup>2</sup> For purposes of this form, an RPW is defined as a tributary that is not a TNW and that typically flows year-round or has continuous flow at least "seasonally" (e.g., typically 3 months).

<sup>3</sup> Supporting documentation is presented in Section III.F.

**SECTION III: CWA ANALYSIS****A. TNWs AND WETLANDS ADJACENT TO TNWs**

The agencies will assert jurisdiction over TNWs and wetlands adjacent to TNWs. If the aquatic resource is a TNW, complete Section III.A.1 and Section III.D.1. only; if the aquatic resource is a wetland adjacent to a TNW, complete Sections III.A.1 and 2 and Section III.D.1.; otherwise, see Section III.B below.

**1. TNW**

Identify TNW: .

Summarize rationale supporting determination: .

**2. Wetland adjacent to TNW**

Summarize rationale supporting conclusion that wetland is “adjacent”:

**B. CHARACTERISTICS OF TRIBUTARY (THAT IS NOT A TNW) AND ITS ADJACENT WETLANDS (IF ANY):**

This section summarizes information regarding characteristics of the tributary and its adjacent wetlands, if any, and it helps determine whether or not the standards for jurisdiction established under *Rapanos* have been met.

The agencies will assert jurisdiction over non-navigable tributaries of TNWs where the tributaries are “relatively permanent waters” (RPWs), i.e. tributaries that typically flow year-round or have continuous flow at least seasonally (e.g., typically 3 months). A wetland that directly abuts an RPW is also jurisdictional. If the aquatic resource is not a TNW, but has year-round (perennial) flow, skip to Section III.D.2. If the aquatic resource is a wetland directly abutting a tributary with perennial flow, skip to Section III.D.4.

A wetland that is adjacent to but that does not directly abut an RPW requires a significant nexus evaluation. Corps districts and EPA regions will include in the record any available information that documents the existence of a significant nexus between a relatively permanent tributary that is not perennial (and its adjacent wetlands if any) and a traditional navigable water, even though a significant nexus finding is not required as a matter of law.

If the waterbody<sup>4</sup> is not an RPW, or a wetland directly abutting an RPW, a JD will require additional data to determine if the waterbody has a significant nexus with a TNW. If the tributary has adjacent wetlands, the significant nexus evaluation must consider the tributary in combination with all of its adjacent wetlands. This significant nexus evaluation that combines, for analytical purposes, the tributary and all of its adjacent wetlands is used whether the review area identified in the JD request is the tributary, or its adjacent wetlands, or both. If the JD covers a tributary with adjacent wetlands, complete Section III.B.1 for the tributary, Section III.B.2 for any onsite wetlands, and Section III.B.3 for all wetlands adjacent to that tributary, both onsite and offsite. The determination whether a significant nexus exists is determined in Section III.C below.

**1. Characteristics of non-TNWs that flow directly or indirectly into TNW****(i) General Area Conditions:**

Watershed size: **Pick List**  
 Drainage area: **Pick List**  
 Average annual rainfall: inches  
 Average annual snowfall: inches

**(ii) Physical Characteristics:****(a) Relationship with TNW:**

- Tributary flows directly into TNW.  
 Tributary flows through **Pick List** tributaries before entering TNW.

Project waters are **Pick List** river miles from TNW.  
 Project waters are **Pick List** river miles from RPW.  
 Project waters are **Pick List** aerial (straight) miles from TNW.  
 Project waters are **Pick List** aerial (straight) miles from RPW.  
 Project waters cross or serve as state boundaries. Explain: .

<sup>4</sup> Note that the Instructional Guidebook contains additional information regarding swales, ditches, washes, and erosional features generally and in the arid West.

Identify flow route to TNW<sup>5</sup>:  
Tributary stream order, if known:

(b) **General Tributary Characteristics (check all that apply):**

**Tributary is:**  Natural  
 Artificial (man-made). Explain:  
 Manipulated (man-altered). Explain:

**Tributary properties with respect to top of bank (estimate):**

Average width: feet  
Average depth: feet  
Average side slopes: **Pick List**.

Primary tributary substrate composition (check all that apply):

Silts  Sands  Concrete  
 Cobbles  Gravel  Muck  
 Bedrock  Vegetation. Type/% cover:  
 Other. Explain:

Tributary condition/stability [e.g., highly eroding, sloughing banks]. Explain:

Presence of run/riffle/pool complexes. Explain:

Tributary geometry: **Pick List**

Tributary gradient (approximate average slope): %

(c) **Flow:**

Tributary provides for: **Pick List**

Estimate average number of flow events in review area/year: **Pick List**

Describe flow regime:

Other information on duration and volume:

Surface flow is: **Pick List**. Characteristics:

Subsurface flow: **Pick List**. Explain findings:

Dye (or other) test performed:

Tributary has (check all that apply):

Bed and banks  
 OHWM<sup>6</sup> (check all indicators that apply):  
 clear, natural line impressed on the bank  the presence of litter and debris  
 changes in the character of soil  destruction of terrestrial vegetation  
 shelving  the presence of wrack line  
 vegetation matted down, bent, or absent  sediment sorting  
 leaf litter disturbed or washed away  scour  
 sediment deposition  multiple observed or predicted flow events  
 water staining  abrupt change in plant community  
 other (list):  
 Discontinuous OHWM.<sup>7</sup> Explain:

If factors other than the OHWM were used to determine lateral extent of CWA jurisdiction:

High Tide Line indicated by:  Mean High Water Mark indicated by:  
 oil or scum line along shore objects  survey to available datum;  
 fine shell or debris deposits (foreshore)  physical markings;  
 physical markings/characteristics  vegetation lines/changes in vegetation types.  
 tidal gauges  
 other (list):

(iii) **Chemical Characteristics:**

Characterize tributary (e.g., water color is clear, discolored, oily film; water quality; general watershed characteristics, etc.). Explain:

<sup>5</sup> Flow route can be described by identifying, e.g., tributary a, which flows through the review area, to flow into tributary b, which then flows into TNW.

<sup>6</sup>A natural or man-made discontinuity in the OHWM does not necessarily sever jurisdiction (e.g., where the stream temporarily flows underground, or where the OHWM has been removed by development or agricultural practices). Where there is a break in the OHWM that is unrelated to the waterbody's flow regime (e.g., flow over a rock outcrop or through a culvert), the agencies will look for indicators of flow above and below the break.

<sup>7</sup>Ibid.

Identify specific pollutants, if known:

**(iv) Biological Characteristics. Channel supports (check all that apply):**

- Riparian corridor. Characteristics (type, average width):
- Wetland fringe. Characteristics:
- Habitat for:
  - Federally Listed species. Explain findings:
  - Fish/spawn areas. Explain findings:
  - Other environmentally-sensitive species. Explain findings:
  - Aquatic/wildlife diversity. Explain findings:

**2. Characteristics of wetlands adjacent to non-TNW that flow directly or indirectly into TNW**

**(i) Physical Characteristics:**

**(a) General Wetland Characteristics:**

Properties:

Wetland size: \_\_\_\_\_ acres

Wetland type. Explain:

Wetland quality. Explain:

Project wetlands cross or serve as state boundaries. Explain:

**(b) General Flow Relationship with Non-TNW:**

Flow is: **Pick List**. Explain:

Surface flow is: **Pick List**

Characteristics:

Subsurface flow: **Pick List**. Explain findings:

Dye (or other) test performed:

**(c) Wetland Adjacency Determination with Non-TNW:**

- Directly abutting
- Not directly abutting
  - Discrete wetland hydrologic connection. Explain:
  - Ecological connection. Explain:
  - Separated by berm/barrier. Explain:

**(d) Proximity (Relationship) to TNW**

Project wetlands are **Pick List** river miles from TNW.

Project waters are **Pick List** aerial (straight) miles from TNW.

Flow is from: **Pick List**.

Estimate approximate location of wetland as within the **Pick List** floodplain.

**(ii) Chemical Characteristics:**

Characterize wetland system (e.g., water color is clear, brown, oil film on surface; water quality; general watershed characteristics; etc.). Explain:

Identify specific pollutants, if known:

**(iii) Biological Characteristics. Wetland supports (check all that apply):**

- Riparian buffer. Characteristics (type, average width):
- Vegetation type/percent cover. Explain:
- Habitat for:
  - Federally Listed species. Explain findings:
  - Fish/spawn areas. Explain findings:
  - Other environmentally-sensitive species. Explain findings:
  - Aquatic/wildlife diversity. Explain findings:

**3. Characteristics of all wetlands adjacent to the tributary (if any)**

All wetland(s) being considered in the cumulative analysis: **Pick List**

Approximately ( ) acres in total are being considered in the cumulative analysis.

For each wetland, specify the following:

Directly abuts? (Y/N)

Size (in acres)

Directly abuts? (Y/N)

Size (in acres)

Summarize overall biological, chemical and physical functions being performed:

### C. SIGNIFICANT NEXUS DETERMINATION

A significant nexus analysis will assess the flow characteristics and functions of the tributary itself and the functions performed by any wetlands adjacent to the tributary to determine if they significantly affect the chemical, physical, and biological integrity of a TNW. For each of the following situations, a significant nexus exists if the tributary, in combination with all of its adjacent wetlands, has more than a speculative or insubstantial effect on the chemical, physical and/or biological integrity of a TNW. Considerations when evaluating significant nexus include, but are not limited to the volume, duration, and frequency of the flow of water in the tributary and its proximity to a TNW, and the functions performed by the tributary and all its adjacent wetlands. It is not appropriate to determine significant nexus based solely on any specific threshold of distance (e.g. between a tributary and its adjacent wetland or between a tributary and the TNW). Similarly, the fact an adjacent wetland lies within or outside of a floodplain is not solely determinative of significant nexus.

Draw connections between the features documented and the effects on the TNW, as identified in the *Rapanos* Guidance and discussed in the Instructional Guidebook. Factors to consider include, for example:

- Does the tributary, in combination with its adjacent wetlands (if any), have the capacity to carry pollutants or flood waters to TNWs, or to reduce the amount of pollutants or flood waters reaching a TNW?
- Does the tributary, in combination with its adjacent wetlands (if any), provide habitat and lifecycle support functions for fish and other species, such as feeding, nesting, spawning, or rearing young for species that are present in the TNW?
- Does the tributary, in combination with its adjacent wetlands (if any), have the capacity to transfer nutrients and organic carbon that support downstream foodwebs?
- Does the tributary, in combination with its adjacent wetlands (if any), have other relationships to the physical, chemical, or biological integrity of the TNW?

**Note: the above list of considerations is not inclusive and other functions observed or known to occur should be documented below:**

1. **Significant nexus findings for non-RPW that has no adjacent wetlands and flows directly or indirectly into TNWs.** Explain findings of presence or absence of significant nexus below, based on the tributary itself, then go to Section III.D:
2. **Significant nexus findings for non-RPW and its adjacent wetlands, where the non-RPW flows directly or indirectly into TNWs.** Explain findings of presence or absence of significant nexus below, based on the tributary in combination with all of its adjacent wetlands, then go to Section III.D:
3. **Significant nexus findings for wetlands adjacent to an RPW but that do not directly abut the RPW.** Explain findings of presence or absence of significant nexus below, based on the tributary in combination with all of its adjacent wetlands, then go to Section III.D:

### D. DETERMINATIONS OF JURISDICTIONAL FINDINGS. THE SUBJECT WATERS/WETLANDS ARE (CHECK ALL THAT APPLY):

1. **TNWs and Adjacent Wetlands.** Check all that apply and provide size estimates in review area:
  - TNWs:           linear feet           width (ft), Or,           acres.
  - Wetlands adjacent to TNWs:           acres.
2. **RPWs that flow directly or indirectly into TNWs.**
  - Tributaries of TNWs where tributaries typically flow year-round are jurisdictional. Provide data and rationale indicating that tributary is perennial:
  - Tributaries of TNW where tributaries have continuous flow "seasonally" (e.g., typically three months each year) are jurisdictional. Data supporting this conclusion is provided at Section III.B. Provide rationale indicating that tributary flows seasonally: **Seepage and releases from Boulder Reservoir are released into Little Dry Creek during most of the year. Flow is relatively permanent, at a minimum.**

Provide estimates for jurisdictional waters in the review area (check all that apply):

  - Tributary waters: ~400 linear feet
  - Other non-wetland waters:           acres.

Identify type(s) of waters:

3. **Non-RPWs<sup>8</sup> that flow directly or indirectly into TNWs.**

<sup>8</sup>See Footnote # 3.

- Waterbody that is not a TNW or an RPW, but flows directly or indirectly into a TNW, and it has a significant nexus with a TNW is jurisdictional. Data supporting this conclusion is provided at Section III.C.

Provide estimates for jurisdictional waters within the review area (check all that apply):

- Tributary waters:            linear feet            width (ft).  
 Other non-wetland waters:            acres.  
 Identify type(s) of waters:            .

**4. Wetlands directly abutting an RPW that flow directly or indirectly into TNWs.**

- Wetlands directly abut RPW and thus are jurisdictional as adjacent wetlands.  
 Wetlands directly abutting an RPW where tributaries typically flow year-round. Provide data and rationale indicating that tributary is perennial in Section III.D.2, above. Provide rationale indicating that wetland is directly abutting an RPW: **Wetland 2-D-5 is directly surface connected to the OHWM.**
- Wetlands directly abutting an RPW where tributaries typically flow "seasonally." Provide data indicating that tributary is seasonal in Section III.B and rationale in Section III.D.2, above. Provide rationale indicating that wetland is directly abutting an RPW:            .

Provide acreage estimates for jurisdictional wetlands in the review area: **0.07** acre.

**5. Wetlands adjacent to but not directly abutting an RPW that flow directly or indirectly into TNWs.**

- Wetlands that do not directly abut an RPW, but when considered in combination with the tributary to which they are adjacent and with similarly situated adjacent wetlands, have a significant nexus with a TNW are jurisdictional. Data supporting this conclusion is provided at Section III.C.

Provide acreage estimates for jurisdictional wetlands in the review area:            acres.

**6. Wetlands adjacent to non-RPWs that flow directly or indirectly into TNWs.**

- Wetlands adjacent to such waters, and have when considered in combination with the tributary to which they are adjacent and with similarly situated adjacent wetlands, have a significant nexus with a TNW are jurisdictional. Data supporting this conclusion is provided at Section III.C.

Provide estimates for jurisdictional wetlands in the review area:            acres.

**7. Impoundments of jurisdictional waters.<sup>9</sup>**

As a general rule, the impoundment of a jurisdictional tributary remains jurisdictional.

- Demonstrate that impoundment was created from "waters of the U.S.," or  
 Demonstrate that water meets the criteria for one of the categories presented above (1-6), or  
 Demonstrate that water is isolated with a nexus to commerce (see E below).

**E. ISOLATED [INTERSTATE OR INTRA-STATE] WATERS, INCLUDING ISOLATED WETLANDS, THE USE, DEGRADATION OR DESTRUCTION OF WHICH COULD AFFECT INTERSTATE COMMERCE, INCLUDING ANY SUCH WATERS (CHECK ALL THAT APPLY):<sup>10</sup>**

- which are or could be used by interstate or foreign travelers for recreational or other purposes.  
 from which fish or shellfish are or could be taken and sold in interstate or foreign commerce.  
 which are or could be used for industrial purposes by industries in interstate commerce.  
 Interstate isolated waters. Explain:            .  
 Other factors. Explain:            .

**Identify water body and summarize rationale supporting determination:**            .

Provide estimates for jurisdictional waters in the review area (check all that apply):

- Tributary waters:            linear feet            width (ft).  
 Other non-wetland waters:            acres.  
 Identify type(s) of waters:            .  
 Wetlands:            acres.

**F. NON-JURISDICTIONAL WATERS, INCLUDING WETLANDS (CHECK ALL THAT APPLY):**

- If potential wetlands were assessed within the review area, these areas did not meet the criteria in the 1987 Corps of Engineers Wetland Delineation Manual and/or appropriate Regional Supplements.

<sup>9</sup> To complete the analysis refer to the key in Section III.D.6 of the Instructional Guidebook.

<sup>10</sup> Prior to asserting or declining CWA jurisdiction based solely on this category, Corps Districts will elevate the action to Corps and EPA HQ for review consistent with the process described in the Corps/EPA Memorandum Regarding CWA Act Jurisdiction Following *Rapanos*.

- Review area included isolated waters with no substantial nexus to interstate (or foreign) commerce.  
 Prior to the Jan 2001 Supreme Court decision in "SWANCC," the review area would have been regulated based solely on the "Migratory Bird Rule" (MBR).
- Waters do not meet the "Significant Nexus" standard, where such a finding is required for jurisdiction. Explain: \_\_\_\_\_
- Other: (explain, if not covered above): \_\_\_\_\_

Provide acreage estimates for non-jurisdictional waters in the review area, where the sole potential basis of jurisdiction is the MBR factors (i.e., presence of migratory birds, presence of endangered species, use of water for irrigated agriculture), using best professional judgment (check all that apply):

- Non-wetland waters (i.e., rivers, streams): \_\_\_\_\_ linear feet \_\_\_\_\_ width (ft).  
 Lakes/ponds: \_\_\_\_\_ acres.  
 Other non-wetland waters: \_\_\_\_\_ acres. List type of aquatic resource: \_\_\_\_\_  
 Wetlands: \_\_\_\_\_ acres.

Provide acreage estimates for non-jurisdictional waters in the review area that do not meet the "Significant Nexus" standard, where such a finding is required for jurisdiction (check all that apply):

- Non-wetland waters (i.e., rivers, streams): \_\_\_\_\_ linear feet, \_\_\_\_\_ width (ft).  
 Lakes/ponds: \_\_\_\_\_ acres.  
 Other non-wetland waters: \_\_\_\_\_ acres. List type of aquatic resource: \_\_\_\_\_  
 Wetlands: \_\_\_\_\_ acres.

#### **SECTION IV: DATA SOURCES.**

##### **A. SUPPORTING DATA. Data reviewed for JD (check all that apply - checked items shall be included in case file and, where checked and requested, appropriately reference sources below):**

- Maps, plans, plots or plat submitted by or on behalf of the applicant/consultant: **Wetlands/Waters of the U.S. Delineation Report for State Highway 119 Mobility Improvements, Boulder County, CDOT, dated September 8, 2021.**
- Data sheets prepared/submitted by or on behalf of the applicant/consultant.  
 Office concurs with data sheets/delineation report.  
 Office does not concur with data sheets/delineation report.
- Data sheets prepared by the Corps: \_\_\_\_\_
- Corps navigable waters' study: \_\_\_\_\_
- U.S. Geological Survey Hydrologic Atlas: \_\_\_\_\_  
 USGS NHD data.  
 USGS 8 and 12 digit HUC maps.
- U.S. Geological Survey map(s). Cite scale & quad name: \_\_\_\_\_
- USDA Natural Resources Conservation Service Soil Survey. Citation: \_\_\_\_\_
- National wetlands inventory map(s). Cite name: \_\_\_\_\_
- State/Local wetland inventory map(s): \_\_\_\_\_
- FEMA/FIRM maps:  
 100-year Floodplain Elevation is: \_\_\_\_\_ (National Geodetic Vertical Datum of 1929)
- Photographs:  Aerial (Name & Date): \_\_\_\_\_  
or  Other (Name & Date): \_\_\_\_\_
- Previous determination(s). File no. and date of response letter: \_\_\_\_\_
- Applicable/supporting case law: \_\_\_\_\_
- Applicable/supporting scientific literature: \_\_\_\_\_
- Other information (please specify): \_\_\_\_\_

##### **B. ADDITIONAL COMMENTS TO SUPPORT JD:**

**APPROVED JURISDICTIONAL DETERMINATION FORM**  
**U.S. Army Corps of Engineers**

This form should be completed by following the instructions provided in Section IV of the JD Form Instructional Guidebook.

**SECTION I: BACKGROUND INFORMATION**

**A. REPORT COMPLETION DATE FOR APPROVED JURISDICTIONAL DETERMINATION (JD):** July 27, 2022

**B. DISTRICT OFFICE, FILE NAME, AND NUMBER:**

Denver Regulatory Office  
 State Highway 119 Mobility Improvements  
 NWO-2021-01613-DEN

**C. PROJECT LOCATION AND BACKGROUND INFORMATION:**

State: CO County/parish/borough: Boulder City: Longmont to Boulder  
 Center coordinates of site (lat/long in degree decimal format): Lat. 40.0892194° N, Long -105.1899500° W  
 Name of nearest waterbody: Left Hand Creek  
 Name of nearest Traditional Navigable Water (TNW) into which the aquatic resource flows: St. Vrain River  
 Name of watershed or Hydrologic Unit Code (HUC): 10190005

- Check if map/diagram of review area and/or potential jurisdictional areas is/are available upon request.  
 Check if other sites (e.g., offsite mitigation sites, disposal sites, etc...) are associated with this action and are recorded on a different JD form.

**D. REVIEW PERFORMED FOR SITE EVALUATION (CHECK ALL THAT APPLY):**

- Office (Desk) Determination. Date: July 27, 2022  
 Field Determination. Date(s): May 5, 2022

**SECTION II: SUMMARY OF FINDINGS**

**A. RHA SECTION 10 DETERMINATION OF JURISDICTION.**

There **Are no** "navigable waters of the U.S." within Rivers and Harbors Act (RHA) jurisdiction (as defined by 33 CFR part 329) in the review area. [Required]

- Waters subject to the ebb and flow of the tide.  
 Waters are presently used, or have been used in the past, or may be susceptible for use to transport interstate or foreign commerce. Explain: .

**B. CWA SECTION 404 DETERMINATION OF JURISDICTION.**

There **Are and are not** "waters of the U.S." within Clean Water Act (CWA) jurisdiction (as defined by 33 CFR part 328) in the review area. [Required]

**1. Waters of the U.S.**

**a. Indicate presence of waters of U.S. in review area (check all that apply):** <sup>1</sup>

- TNWs, including territorial seas  
 Wetlands adjacent to TNWs  
 Relatively permanent waters<sup>2</sup> (RPWs) that flow directly or indirectly into TNWs  
 Non-RPWs that flow directly or indirectly into TNWs  
 Wetlands directly abutting RPWs that flow directly or indirectly into TNWs  
 Wetlands adjacent to but not directly abutting RPWs that flow directly or indirectly into TNWs  
 Wetlands adjacent to non-RPWs that flow directly or indirectly into TNWs  
 Impoundments of jurisdictional waters  
 Isolated (interstate or intrastate) waters, including isolated wetlands

**b. Identify (estimate) size of waters of the U.S. in the review area:** Left Hand Creek and abutting wetlands

Non-wetland waters: linear feet: ~ 500  
 Wetlands: Wetlands 1-B-2, 1-B-3, and 1-B-4: 0.28 acre.

**c. Limits (boundaries) of jurisdiction based on:**

Elevation of established OHWM (if known): .

**2. Non-regulated waters/wetlands (check if applicable):**<sup>3</sup> Wetlands 1-C-1 (4.3 acres) and 1-C-2 (0.48 acre)

- Potentially jurisdictional waters and/or wetlands were assessed within the review area and determined to be not jurisdictional. Explain: Wetlands 1-C-1 and 1-C-2 are physically isolated from the nearest water of the United States, Left Hand Creek, located approximately 200 ft from the wetland within the review area. These wetlands are separated from Left Hand Creek by State Highway 119, uplands, a trail, and lie within the 500-year floodplain. Based on the May 5, 2022, site visit and a desk review, there is no known hydrological connection between the

<sup>1</sup> Boxes checked below shall be supported by completing the appropriate sections in Section III below.

<sup>2</sup> For purposes of this form, an RPW is defined as a tributary that is not a TNW and that typically flows year-round or has continuous flow at least "seasonally" (e.g., typically 3 months).

<sup>3</sup> Supporting documentation is presented in Section III.F.



wetland and Left Hand Creek. These wetlands lie in a shallow depression which appears to be a borrow area for construction of State Highway 119. The wetland is not adjacent to any waters of the United States as defined by 33 CFR 328.3(c).

Additionally, the Rapanos Guidance further clarifies the definition of adjacency, stating that wetlands are adjacent if one of the following three criteria are satisfied: First, there is an unbroken surface or shallow subsurface connection to jurisdictional waters... Second, they are physically separated from jurisdictional waters by the man-made dikes or barriers, natural river berms, beach dunes, the like. Or third, their proximity to a jurisdictional water is reasonably close, supporting the science-based inference that such wetlands have an ecological interconnection with jurisdictional waters. We have reviewed this guidance and have determined that none of the criteria are met in this case. Lastly, the wetland is isolated and is not a water of the United States, as defined in 33 CFR 328.3(a). The wetland is "isolated" and does not currently nor was it in the past associated with affecting (i) interstate or foreign travelers for recreational purposes or other purposes or, (ii) fish or shellfish that could be taken and sold in interstate or foreign commerce or, (iii) current use or potential use for industrial purposes by industries in interstate commerce.

In conclusion, Wetlands 1-C-1 and 1-C-2 are isolated (as per federal regulation) and do not possess any known nexus to interstate commerce. As such, the NWO -Denver Regulatory Office determined that these wetlands are not subject to federal regulation under Section 404 of the Clean Water Act.

### **SECTION III: CWA ANALYSIS**

#### **A. TNWs AND WETLANDS ADJACENT TO TNWs**

The agencies will assert jurisdiction over TNWs and wetlands adjacent to TNWs. If the aquatic resource is a TNW, complete Section III.A.1 and Section III.D.1. only; if the aquatic resource is a wetland adjacent to a TNW, complete Sections III.A.1 and 2 and Section III.D.1.; otherwise, see Section III.B below.

##### **1. TNW**

Identify TNW: .

Summarize rationale supporting determination: .

##### **2. Wetland adjacent to TNW**

Summarize rationale supporting conclusion that wetland is "adjacent": .

#### **B. CHARACTERISTICS OF TRIBUTARY (THAT IS NOT A TNW) AND ITS ADJACENT WETLANDS (IF ANY):**

This section summarizes information regarding characteristics of the tributary and its adjacent wetlands, if any, and it helps determine whether or not the standards for jurisdiction established under *Rapanos* have been met.

The agencies will assert jurisdiction over non-navigable tributaries of TNWs where the tributaries are "relatively permanent waters" (RPWs), i.e. tributaries that typically flow year-round or have continuous flow at least seasonally (e.g., typically 3 months). A wetland that directly abuts an RPW is also jurisdictional. If the aquatic resource is not a TNW, but has year-round (perennial) flow, skip to Section III.D.2. If the aquatic resource is a wetland directly abutting a tributary with perennial flow, skip to Section III.D.4.

A wetland that is adjacent to but that does not directly abut an RPW requires a significant nexus evaluation. Corps districts and EPA regions will include in the record any available information that documents the existence of a significant nexus between a relatively permanent tributary that is not perennial (and its adjacent wetlands if any) and a traditional navigable water, even though a significant nexus finding is not required as a matter of law.

If the waterbody<sup>4</sup> is not an RPW, or a wetland directly abutting an RPW, a JD will require additional data to determine if the waterbody has a significant nexus with a TNW. If the tributary has adjacent wetlands, the significant nexus evaluation must consider the tributary in combination with all of its adjacent wetlands. This significant nexus evaluation that combines, for analytical purposes, the tributary and all of its adjacent wetlands is used whether the review area identified in the JD request is the tributary, or its adjacent wetlands, or both. If the JD covers a tributary with adjacent wetlands, complete Section III.B.1 for the tributary, Section III.B.2 for any onsite wetlands, and Section III.B.3 for all wetlands adjacent to that tributary, both onsite and offsite. The determination whether a significant nexus exists is determined in Section III.C below.

<sup>4</sup> Note that the Instructional Guidebook contains additional information regarding swales, ditches, washes, and erosional features generally and in the arid West.

## 1. Characteristics of non-TNWs that flow directly or indirectly into TNW

## (i) General Area Conditions:

Watershed size: **Pick List**  
 Drainage area: **Pick List**  
 Average annual rainfall: inches  
 Average annual snowfall: inches

## (ii) Physical Characteristics:

## (a) Relationship with TNW:

- Tributary flows directly into TNW.  
 Tributary flows through **Pick List** tributaries before entering TNW.

Project waters are **Pick List** river miles from TNW.  
 Project waters are **Pick List** river miles from RPW.  
 Project waters are **Pick List** aerial (straight) miles from TNW.  
 Project waters are **Pick List** aerial (straight) miles from RPW.  
 Project waters cross or serve as state boundaries. Explain:

Identify flow route to TNW<sup>5</sup>:  
 Tributary stream order, if known:

## (b) General Tributary Characteristics (check all that apply):

**Tributary** is:  Natural  
 Artificial (man-made). Explain:  
 Manipulated (man-altered). Explain:

**Tributary** properties with respect to top of bank (estimate):

Average width: feet  
 Average depth: feet  
 Average side slopes: **Pick List**.

Primary tributary substrate composition (check all that apply):

- Silts  Sands  Concrete  
 Cobbles  Gravel  Muck  
 Bedrock  Vegetation. Type/% cover:  
 Other. Explain:

Tributary condition/stability [e.g., highly eroding, sloughing banks]. Explain:

Presence of run/riffle/pool complexes. Explain:

Tributary geometry: **Pick List**

Tributary gradient (approximate average slope): %

## (c) Flow:

Tributary provides for: **Pick List**

Estimate average number of flow events in review area/year: **Pick List**

Describe flow regime:

Other information on duration and volume:

Surface flow is: **Pick List**. Characteristics:

Subsurface flow: **Pick List**. Explain findings:

- Dye (or other) test performed:

Tributary has (check all that apply):

- Bed and banks  
 OHWM<sup>6</sup> (check all indicators that apply):  
 clear, natural line impressed on the bank  the presence of litter and debris  
 changes in the character of soil  destruction of terrestrial vegetation  
 shelving  the presence of wrack line

<sup>5</sup> Flow route can be described by identifying, e.g., tributary a, which flows through the review area, to flow into tributary b, which then flows into TNW.

<sup>6</sup>A natural or man-made discontinuity in the OHWM does not necessarily sever jurisdiction (e.g., where the stream temporarily flows underground, or where the OHWM has been removed by development or agricultural practices). Where there is a break in the OHWM that is unrelated to the waterbody's flow regime (e.g., flow over a rock outcrop or through a culvert), the agencies will look for indicators of flow above and below the break.

- vegetation matted down, bent, or absent     sediment sorting  
 leaf litter disturbed or washed away     scour  
 sediment deposition     multiple observed or predicted flow events  
 water staining     abrupt change in plant community  
 other (list):  
 Discontinuous OHWM.<sup>7</sup> Explain:

If factors other than the OHWM were used to determine lateral extent of CWA jurisdiction:

- High Tide Line indicated by:     Mean High Water Mark indicated by:  
 oil or scum line along shore objects     survey to available datum;  
 fine shell or debris deposits (foreshore)     physical markings;  
 physical markings/characteristics     vegetation lines/changes in vegetation types.  
 tidal gauges  
 other (list):

**(iii) Chemical Characteristics:**

Characterize tributary (e.g., water color is clear, discolored, oily film; water quality; general watershed characteristics, etc.). Explain:

Identify specific pollutants, if known:

**(iv) Biological Characteristics. Channel supports (check all that apply):**

- Riparian corridor. Characteristics (type, average width):  
 Wetland fringe. Characteristics:  
 Habitat for:  
 Federally Listed species. Explain findings:  
 Fish/spawn areas. Explain findings:  
 Other environmentally-sensitive species. Explain findings:  
 Aquatic/wildlife diversity. Explain findings:

**2. Characteristics of wetlands adjacent to non-TNW that flow directly or indirectly into TNW**

**(i) Physical Characteristics:**

**(a) General Wetland Characteristics:**

Properties:

Wetland size:        acres

Wetland type. Explain:

Wetland quality. Explain:

Project wetlands cross or serve as state boundaries. Explain:

**(b) General Flow Relationship with Non-TNW:**

Flow is: **Pick List**. Explain:

Surface flow is: **Pick List**

Characteristics:

Subsurface flow: **Pick List**. Explain findings:

Dye (or other) test performed:

**(c) Wetland Adjacency Determination with Non-TNW:**

Directly abutting

Not directly abutting

Discrete wetland hydrologic connection. Explain:

Ecological connection. Explain:

Separated by berm/barrier. Explain:

**(d) Proximity (Relationship) to TNW**

Project wetlands are **Pick List** river miles from TNW.

Project waters are **Pick List** aerial (straight) miles from TNW.

Flow is from: **Pick List**.

Estimate approximate location of wetland as within the **Pick List** floodplain.

**(ii) Chemical Characteristics:**

Characterize wetland system (e.g., water color is clear, brown, oil film on surface; water quality; general watershed characteristics; etc.). Explain:

<sup>7</sup>Ibid.

Identify specific pollutants, if known:

**(iii) Biological Characteristics. Wetland supports (check all that apply):**

- Riparian buffer. Characteristics (type, average width):
- Vegetation type/percent cover. Explain:
- Habitat for:
- Federally Listed species. Explain findings:
- Fish/spawn areas. Explain findings:
- Other environmentally-sensitive species. Explain findings:
- Aquatic/wildlife diversity. Explain findings:

**3. Characteristics of all wetlands adjacent to the tributary (if any)**

All wetland(s) being considered in the cumulative analysis: **Pick List**

Approximately ( ) acres in total are being considered in the cumulative analysis.

For each wetland, specify the following:

<u>Directly abuts? (Y/N)</u>	<u>Size (in acres)</u>	<u>Directly abuts? (Y/N)</u>	<u>Size (in acres)</u>
------------------------------	------------------------	------------------------------	------------------------

Summarize overall biological, chemical and physical functions being performed:

**C. SIGNIFICANT NEXUS DETERMINATION**

A significant nexus analysis will assess the flow characteristics and functions of the tributary itself and the functions performed by any wetlands adjacent to the tributary to determine if they significantly affect the chemical, physical, and biological integrity of a TNW. For each of the following situations, a significant nexus exists if the tributary, in combination with all of its adjacent wetlands, has more than a speculative or insubstantial effect on the chemical, physical and/or biological integrity of a TNW. Considerations when evaluating significant nexus include, but are not limited to the volume, duration, and frequency of the flow of water in the tributary and its proximity to a TNW, and the functions performed by the tributary and all its adjacent wetlands. It is not appropriate to determine significant nexus based solely on any specific threshold of distance (e.g. between a tributary and its adjacent wetland or between a tributary and the TNW). Similarly, the fact an adjacent wetland lies within or outside of a floodplain is not solely determinative of significant nexus.

**Draw connections between the features documented and the effects on the TNW, as identified in the *Rapanos* Guidance and discussed in the Instructional Guidebook. Factors to consider include, for example:**

- Does the tributary, in combination with its adjacent wetlands (if any), have the capacity to carry pollutants or flood waters to TNWs, or to reduce the amount of pollutants or flood waters reaching a TNW?
- Does the tributary, in combination with its adjacent wetlands (if any), provide habitat and lifecycle support functions for fish and other species, such as feeding, nesting, spawning, or rearing young for species that are present in the TNW?
- Does the tributary, in combination with its adjacent wetlands (if any), have the capacity to transfer nutrients and organic carbon that support downstream foodwebs?
- Does the tributary, in combination with its adjacent wetlands (if any), have other relationships to the physical, chemical, or biological integrity of the TNW?

**Note: the above list of considerations is not inclusive and other functions observed or known to occur should be documented below:**

1. **Significant nexus findings for non-RPW that has no adjacent wetlands and flows directly or indirectly into TNWs.** Explain findings of presence or absence of significant nexus below, based on the tributary itself, then go to Section III.D:
2. **Significant nexus findings for non-RPW and its adjacent wetlands, where the non-RPW flows directly or indirectly into TNWs.** Explain findings of presence or absence of significant nexus below, based on the tributary in combination with all of its adjacent wetlands, then go to Section III.D:
3. **Significant nexus findings for wetlands adjacent to an RPW but that do not directly abut the RPW.** Explain findings of presence or absence of significant nexus below, based on the tributary in combination with all of its adjacent wetlands, then go to Section III.D:

**D. DETERMINATIONS OF JURISDICTIONAL FINDINGS. THE SUBJECT WATERS/WETLANDS ARE (CHECK ALL THAT APPLY):**

1. **TNWs and Adjacent Wetlands.** Check all that apply and provide size estimates in review area:

- TNWs: linear feet width (ft), Or, acres.  
 Wetlands adjacent to TNWs: acres.

**2. RPWs that flow directly or indirectly into TNWs.**

- Tributaries of TNWs where tributaries typically flow year-round are jurisdictional. Provide data and rationale indicating that tributary is perennial: **USGS Station 06724970 shows Left Hand Creek to have year-round flow.**  
 Tributaries of TNW where tributaries have continuous flow "seasonally" (e.g., typically three months each year) are jurisdictional. Data supporting this conclusion is provided at Section III.B. Provide rationale indicating that tributary flows seasonally:

Provide estimates for jurisdictional waters in the review area (check all that apply):

- Tributary waters: **~500** linear feet  
 Other non-wetland waters: acres.  
 Identify type(s) of waters:

**3. Non-RPWs<sup>8</sup> that flow directly or indirectly into TNWs.**

- Waterbody that is not a TNW or an RPW, but flows directly or indirectly into a TNW, and it has a significant nexus with a TNW is jurisdictional. Data supporting this conclusion is provided at Section III.C.

Provide estimates for jurisdictional waters within the review area (check all that apply):

- Tributary waters: linear feet width (ft).  
 Other non-wetland waters: acres.  
 Identify type(s) of waters:

**4. Wetlands directly abutting an RPW that flow directly or indirectly into TNWs.**

- Wetlands directly abut RPW and thus are jurisdictional as adjacent wetlands.  
 Wetlands directly abutting an RPW where tributaries typically flow year-round. Provide data and rationale indicating that tributary is perennial in Section III.D.2, above. Provide rationale indicating that wetland is directly abutting an RPW: **Wetlands 1-B-2, 1-B-3, and 1-B-4 are directly surface connected to the OHWM.**  
 Wetlands directly abutting an RPW where tributaries typically flow "seasonally." Provide data indicating that tributary is seasonal in Section III.B and rationale in Section III.D.2, above. Provide rationale indicating that wetland is directly abutting an RPW:

Provide acreage estimates for jurisdictional wetlands in the review area: **0.28** acre.

**5. Wetlands adjacent to but not directly abutting an RPW that flow directly or indirectly into TNWs.**

- Wetlands that do not directly abut an RPW, but when considered in combination with the tributary to which they are adjacent and with similarly situated adjacent wetlands, have a significant nexus with a TNW are jurisdictional. Data supporting this conclusion is provided at Section III.C.

Provide acreage estimates for jurisdictional wetlands in the review area: acres.

**6. Wetlands adjacent to non-RPWs that flow directly or indirectly into TNWs.**

- Wetlands adjacent to such waters, and have when considered in combination with the tributary to which they are adjacent and with similarly situated adjacent wetlands, have a significant nexus with a TNW are jurisdictional. Data supporting this conclusion is provided at Section III.C.

Provide estimates for jurisdictional wetlands in the review area: acres.

**7. Impoundments of jurisdictional waters.<sup>9</sup>**

As a general rule, the impoundment of a jurisdictional tributary remains jurisdictional.

- Demonstrate that impoundment was created from "waters of the U.S.," or  
 Demonstrate that water meets the criteria for one of the categories presented above (1-6), or  
 Demonstrate that water is isolated with a nexus to commerce (see E below).

**E. ISOLATED [INTERSTATE OR INTRA-STATE] WATERS, INCLUDING ISOLATED WETLANDS, THE USE, DEGRADATION OR DESTRUCTION OF WHICH COULD AFFECT INTERSTATE COMMERCE, INCLUDING ANY SUCH WATERS (CHECK ALL THAT APPLY):<sup>10</sup>**

<sup>8</sup>See Footnote # 3.

<sup>9</sup>To complete the analysis refer to the key in Section III.D.6 of the Instructional Guidebook.

<sup>10</sup> Prior to asserting or declining CWA jurisdiction based solely on this category, Corps Districts will elevate the action to Corps and EPA HQ for review consistent with the process described in the Corps/EPA Memorandum Regarding CWA Act Jurisdiction Following Rapanos.

- which are or could be used by interstate or foreign travelers for recreational or other purposes.
- from which fish or shellfish are or could be taken and sold in interstate or foreign commerce.
- which are or could be used for industrial purposes by industries in interstate commerce.
- Interstate isolated waters. Explain: .
- Other factors. Explain: .

**Identify water body and summarize rationale supporting determination:**

Provide estimates for jurisdictional waters in the review area (check all that apply):

- Tributary waters: linear feet width (ft).
- Other non-wetland waters: acres.  
Identify type(s) of waters: .
- Wetlands: acres.

**F. NON-JURISDICTIONAL WATERS, INCLUDING WETLANDS (CHECK ALL THAT APPLY):**

- If potential wetlands were assessed within the review area, these areas did not meet the criteria in the 1987 Corps of Engineers Wetland Delineation Manual and/or appropriate Regional Supplements.
- Review area included isolated waters with no substantial nexus to interstate (or foreign) commerce.
  - Prior to the Jan 2001 Supreme Court decision in "SWANCC," the review area would have been regulated based solely on the "Migratory Bird Rule" (MBR).
- Waters do not meet the "Significant Nexus" standard, where such a finding is required for jurisdiction. Explain: .
- Other: (explain, if not covered above):

Provide acreage estimates for non-jurisdictional waters in the review area, where the sole potential basis of jurisdiction is the MBR factors (i.e., presence of migratory birds, presence of endangered species, use of water for irrigated agriculture), using best professional judgment (check all that apply):

- Non-wetland waters (i.e., rivers, streams): linear feet width (ft).
- Lakes/ponds: acres.
- Other non-wetland waters: acres. List type of aquatic resource: .
- Wetlands: acres.

Provide acreage estimates for non-jurisdictional waters in the review area that do not meet the "Significant Nexus" standard, where such a finding is required for jurisdiction (check all that apply):

- Non-wetland waters (i.e., rivers, streams): linear feet, width (ft).
- Lakes/ponds: acres.
- Other non-wetland waters: acres. List type of aquatic resource: .
- Wetlands: acres.

**SECTION IV: DATA SOURCES.**

**A. SUPPORTING DATA. Data reviewed for JD (check all that apply - checked items shall be included in case file and, where checked and requested, appropriately reference sources below):**

- Maps, plans, plots or plat submitted by or on behalf of the applicant/consultant: **Wetlands/Waters of the U.S. Delineation Report for State Highway 119 Mobility Improvements, Boulder County, CDOT, dated September 8, 2021.**
- Data sheets prepared/submitted by or on behalf of the applicant/consultant.
  - Office concurs with data sheets/delineation report.
  - Office does not concur with data sheets/delineation report.
- Data sheets prepared by the Corps:
- Corps navigable waters' study:
- U.S. Geological Survey Hydrologic Atlas:
  - USGS NHD data.
  - USGS 8 and 12 digit HUC maps.
- U.S. Geological Survey map(s). Cite scale & quad name:
- USDA Natural Resources Conservation Service Soil Survey. Citation: .
- National wetlands inventory map(s). Cite name: .
- State/Local wetland inventory map(s): .
- FEMA/FIRM maps:
- 100-year Floodplain Elevation is: (National Geodetic Vertical Datum of 1929)
- Photographs:  Aerial (Name & Date): .  
or  Other (Name & Date): .
- Previous determination(s). File no. and date of response letter: .
- Applicable/supporting case law: .
- Applicable/supporting scientific literature: .
- Other information (please specify): **USGS Station 06724970.**

**B. ADDITIONAL COMMENTS TO SUPPORT JD:**

**APPROVED JURISDICTIONAL DETERMINATION FORM  
U.S. Army Corps of Engineers**

This form should be completed by following the instructions provided in Section IV of the JD Form Instructional Guidebook.

**SECTION I: BACKGROUND INFORMATION**

**A. REPORT COMPLETION DATE FOR APPROVED JURISDICTIONAL DETERMINATION (JD):** July 27, 2022

**B. DISTRICT OFFICE, FILE NAME, AND NUMBER:**

Denver Regulatory Office  
State Highway 119 Mobility Improvements  
NWO-2021-01613-DEN

**C. PROJECT LOCATION AND BACKGROUND INFORMATION:**

State: CO County/parish/borough: Boulder City: Longmont to Boulder  
Center coordinates of site (lat/long in degree decimal format): Lat. 40.0892194° N, Long -105.1899500° W  
Name of nearest waterbody: NA  
Name of nearest Traditional Navigable Water (TNW) into which the aquatic resource flows: NA  
Name of watershed or Hydrologic Unit Code (HUC): 10190005

- Check if map/diagram of review area and/or potential jurisdictional areas is/are available upon request.  
 Check if other sites (e.g., offsite mitigation sites, disposal sites, etc...) are associated with this action and are recorded on a different JD form.

**D. REVIEW PERFORMED FOR SITE EVALUATION (CHECK ALL THAT APPLY):**

- Office (Desk) Determination. Date: July 27, 2022  
 Field Determination. Date(s): May 5, 2022

**SECTION II: SUMMARY OF FINDINGS**

**A. RHA SECTION 10 DETERMINATION OF JURISDICTION.**

There **Are no** "navigable waters of the U.S." within Rivers and Harbors Act (RHA) jurisdiction (as defined by 33 CFR part 329) in the review area. [Required]

- Waters subject to the ebb and flow of the tide.  
 Waters are presently used, or have been used in the past, or may be susceptible for use to transport interstate or foreign commerce. Explain: .

**B. CWA SECTION 404 DETERMINATION OF JURISDICTION.**

There **Are no** "waters of the U.S." within Clean Water Act (CWA) jurisdiction (as defined by 33 CFR part 328) in the review area. [Required]

**1. Waters of the U.S.**

**a. Indicate presence of waters of U.S. in review area (check all that apply):** <sup>1</sup>

- TNWs, including territorial seas  
 Wetlands adjacent to TNWs  
 Relatively permanent waters<sup>2</sup> (RPWs) that flow directly or indirectly into TNWs  
 Non-RPWs that flow directly or indirectly into TNWs  
 Wetlands directly abutting RPWs that flow directly or indirectly into TNWs  
 Wetlands adjacent to but not directly abutting RPWs that flow directly or indirectly into TNWs  
 Wetlands adjacent to non-RPWs that flow directly or indirectly into TNWs  
 Impoundments of jurisdictional waters  
 Isolated (interstate or intrastate) waters, including isolated wetlands

**b. Identify (estimate) size of waters of the U.S. in the review area:**

Non-wetland waters: linear feet:  
Wetlands: acre.

**c. Limits (boundaries) of jurisdiction based on:**

Elevation of established OHWM (if known): .

**2. Non-regulated waters/wetlands (check if applicable):**<sup>3</sup>

- Potentially jurisdictional waters and/or wetlands were assessed within the review area and determined to be not jurisdictional. Explain: **Potentially jurisdictional waters and/or wetlands were assessed within the review area and determined to be not jurisdictional. Explain: This AJD form addresses waters that are generally not considered waters of the U.S. These waters and their general consideration as non-waters of the US can be found in the Preamble of the November 13, 1986 Federal Register (Page 41217), Part 328. Such waters include non-tidal**

<sup>1</sup> Boxes checked below shall be supported by completing the appropriate sections in Section III below.

<sup>2</sup> For purposes of this form, an RPW is defined as a tributary that is not a TNW and that typically flows year-round or has continuous flow at least "seasonally" (e.g., typically 3 months).

<sup>3</sup> Supporting documentation is presented in Section III.F.



drainage and irrigation ditches constructed on dryland and associated wetlands. The majority of these aquatic resources are roadside ditches located adjacent to or in the median of SH 119, or irrigation laterals that cross the roadway then terminate in uplands. As a result of our case specific evaluation of waters located within the review area, we have determined that the aquatic resources below meet the criteria outlined above and are not waters of the United States. Features listed below are not jurisdictional:

1-A-1, 1-A-2, 1-A-3, 1-A-4, 1-A-5, 1-D-1, 1-D-2, 1-D-3, 1-E-1, 1-E-2, 1-E-3, 1-F-1, 1-F-2, 1-F-3, 2-A-1, 2-A-2, 2-A-3, 2-A-4, 2-B-1, 2-B-2, 2-B-3, 2-C-1, 2-C-2, 2-C-3, 2-C-4, 2-D-2, 2-D-3, 2-E-1, 2-E-2, 3-A-2, 3-A-3, 3-A-4, 3-A-5, 3-A-6, 3-A-7, 3-B-1, 3-B-2, 3-B-3, 3-B-4, 3-C-1, 3-C-2, 3-C-3, 3-C-4, 3-C-5, 3-C-6, 3-C-7, 3-C-8, 3-D-2, 3-D-3

### **SECTION III: CWA ANALYSIS**

#### **A. TNWs AND WETLANDS ADJACENT TO TNWs**

The agencies will assert jurisdiction over TNWs and wetlands adjacent to TNWs. If the aquatic resource is a TNW, complete Section III.A.1 and Section III.D.1. only; if the aquatic resource is a wetland adjacent to a TNW, complete Sections III.A.1 and 2 and Section III.D.1.; otherwise, see Section III.B below.

##### **1. TNW**

Identify TNW: .

Summarize rationale supporting determination: .

##### **2. Wetland adjacent to TNW**

Summarize rationale supporting conclusion that wetland is "adjacent": .

#### **B. CHARACTERISTICS OF TRIBUTARY (THAT IS NOT A TNW) AND ITS ADJACENT WETLANDS (IF ANY):**

This section summarizes information regarding characteristics of the tributary and its adjacent wetlands, if any, and it helps determine whether or not the standards for jurisdiction established under *Rapanos* have been met.

The agencies will assert jurisdiction over non-navigable tributaries of TNWs where the tributaries are "relatively permanent waters" (RPWs), i.e. tributaries that typically flow year-round or have continuous flow at least seasonally (e.g., typically 3 months). A wetland that directly abuts an RPW is also jurisdictional. If the aquatic resource is not a TNW, but has year-round (perennial) flow, skip to Section III.D.2. If the aquatic resource is a wetland directly abutting a tributary with perennial flow, skip to Section III.D.4.

A wetland that is adjacent to but that does not directly abut an RPW requires a significant nexus evaluation. Corps districts and EPA regions will include in the record any available information that documents the existence of a significant nexus between a relatively permanent tributary that is not perennial (and its adjacent wetlands if any) and a traditional navigable water, even though a significant nexus finding is not required as a matter of law.

If the waterbody<sup>4</sup> is not an RPW, or a wetland directly abutting an RPW, a JD will require additional data to determine if the waterbody has a significant nexus with a TNW. If the tributary has adjacent wetlands, the significant nexus evaluation must consider the tributary in combination with all of its adjacent wetlands. This significant nexus evaluation that combines, for analytical purposes, the tributary and all of its adjacent wetlands is used whether the review area identified in the JD request is the tributary, or its adjacent wetlands, or both. If the JD covers a tributary with adjacent wetlands, complete Section III.B.1 for the tributary, Section III.B.2 for any onsite wetlands, and Section III.B.3 for all wetlands adjacent to that tributary, both onsite and offsite. The determination whether a significant nexus exists is determined in Section III.C below.

##### **1. Characteristics of non-TNWs that flow directly or indirectly into TNW**

###### **(i) General Area Conditions:**

Watershed size:

**Pick List**

Drainage area:

**Pick List**

Average annual rainfall: inches

Average annual snowfall: inches

###### **(ii) Physical Characteristics:**

<sup>4</sup> Note that the Instructional Guidebook contains additional information regarding swales, ditches, washes, and erosional features generally and in the arid West.

## (a) Relationship with TNW:

- Tributary flows directly into TNW.  
 Tributary flows through **Pick List** tributaries before entering TNW.

Project waters are **Pick List** river miles from TNW.  
 Project waters are **Pick List** river miles from RPW.  
 Project waters are **Pick List** aerial (straight) miles from TNW.  
 Project waters are **Pick List** aerial (straight) miles from RPW.  
 Project waters cross or serve as state boundaries. Explain:

Identify flow route to TNW<sup>5</sup>:  
 Tributary stream order, if known:

## (b) General Tributary Characteristics (check all that apply):

- Tributary** is:  Natural  
 Artificial (man-made). Explain:  
 Manipulated (man-altered). Explain:

**Tributary** properties with respect to top of bank (estimate):

Average width:            feet  
 Average depth:           feet  
 Average side slopes: **Pick List**.

Primary tributary substrate composition (check all that apply):

- Silts                        Sands                        Concrete  
 Cobbles                    Gravel                      Muck  
 Bedrock                   Vegetation. Type/% cover:  
 Other. Explain:

Tributary condition/stability [e.g., highly eroding, sloughing banks]. Explain:

Presence of run/riffle/pool complexes. Explain:

Tributary geometry: **Pick List**

Tributary gradient (approximate average slope):            %

## (c) Flow:

Tributary provides for: **Pick List**

Estimate average number of flow events in review area/year: **Pick List**

Describe flow regime:

Other information on duration and volume:

Surface flow is: **Pick List**. Characteristics:

Subsurface flow: **Pick List**. Explain findings:

- Dye (or other) test performed:

Tributary has (check all that apply):

- Bed and banks  
 OHWM<sup>6</sup> (check all indicators that apply):  
 clear, natural line impressed on the bank    the presence of litter and debris  
 changes in the character of soil            destruction of terrestrial vegetation  
 shelving                                        the presence of wrack line  
 vegetation matted down, bent, or absent    sediment sorting  
 leaf litter disturbed or washed away    scour  
 sediment deposition                        multiple observed or predicted flow events  
 water staining                                abrupt change in plant community  
 other (list):  
 Discontinuous OHWM.<sup>7</sup> Explain:

If factors other than the OHWM were used to determine lateral extent of CWA jurisdiction:

<sup>5</sup> Flow route can be described by identifying, e.g., tributary a, which flows through the review area, to flow into tributary b, which then flows into TNW.

<sup>6</sup>A natural or man-made discontinuity in the OHWM does not necessarily sever jurisdiction (e.g., where the stream temporarily flows underground, or where the OHWM has been removed by development or agricultural practices). Where there is a break in the OHWM that is unrelated to the waterbody's flow regime (e.g., flow over a rock outcrop or through a culvert), the agencies will look for indicators of flow above and below the break.

<sup>7</sup>Ibid.

- |  |  |
|--|--|
| <input type="checkbox"/> High Tide Line indicated by:              | <input type="checkbox"/> Mean High Water Mark indicated by:            |
| <input type="checkbox"/> oil or scum line along shore objects      | <input type="checkbox"/> survey to available datum;                    |
| <input type="checkbox"/> fine shell or debris deposits (foreshore) | <input type="checkbox"/> physical markings;                            |
| <input type="checkbox"/> physical markings/characteristics         | <input type="checkbox"/> vegetation lines/changes in vegetation types. |
| <input type="checkbox"/> tidal gauges                              |  |
| <input type="checkbox"/> other (list):                             |  |

**(iii) Chemical Characteristics:**

Characterize tributary (e.g., water color is clear, discolored, oily film; water quality; general watershed characteristics, etc.). Explain:

Identify specific pollutants, if known:

**(iv) Biological Characteristics. Channel supports (check all that apply):**

- Riparian corridor. Characteristics (type, average width):
- Wetland fringe. Characteristics:
- Habitat for:
  - Federally Listed species. Explain findings:
  - Fish/spawn areas. Explain findings:
  - Other environmentally-sensitive species. Explain findings:
  - Aquatic/wildlife diversity. Explain findings:

**2. Characteristics of wetlands adjacent to non-TNW that flow directly or indirectly into TNW****(i) Physical Characteristics:****(a) General Wetland Characteristics:**

Properties:

Wetland size: \_\_\_\_\_ acres

Wetland type. Explain:

Wetland quality. Explain:

Project wetlands cross or serve as state boundaries. Explain:

**(b) General Flow Relationship with Non-TNW:**

Flow is: **Pick List**. Explain:

Surface flow is: **Pick List**

Characteristics:

Subsurface flow: **Pick List**. Explain findings:

Dye (or other) test performed:

**(c) Wetland Adjacency Determination with Non-TNW:**

- Directly abutting
- Not directly abutting
  - Discrete wetland hydrologic connection. Explain:
  - Ecological connection. Explain:
  - Separated by berm/barrier. Explain:

**(d) Proximity (Relationship) to TNW**

Project wetlands are **Pick List** river miles from TNW.

Project waters are **Pick List** aerial (straight) miles from TNW.

Flow is from: **Pick List**.

Estimate approximate location of wetland as within the **Pick List** floodplain.

**(ii) Chemical Characteristics:**

Characterize wetland system (e.g., water color is clear, brown, oil film on surface; water quality; general watershed characteristics; etc.). Explain:

Identify specific pollutants, if known:

**(iii) Biological Characteristics. Wetland supports (check all that apply):**

- Riparian buffer. Characteristics (type, average width):
- Vegetation type/percent cover. Explain:
- Habitat for:
  - Federally Listed species. Explain findings:
  - Fish/spawn areas. Explain findings:
  - Other environmentally-sensitive species. Explain findings:
  - Aquatic/wildlife diversity. Explain findings:

**3. Characteristics of all wetlands adjacent to the tributary (if any)**

All wetland(s) being considered in the cumulative analysis: **Pick List**

Approximately ( ) acres in total are being considered in the cumulative analysis.

For each wetland, specify the following:

Directly abuts? (Y/N)      Size (in acres)      Directly abuts? (Y/N)      Size (in acres)

Summarize overall biological, chemical and physical functions being performed: .

**C. SIGNIFICANT NEXUS DETERMINATION**

A significant nexus analysis will assess the flow characteristics and functions of the tributary itself and the functions performed by any wetlands adjacent to the tributary to determine if they significantly affect the chemical, physical, and biological integrity of a TNW. For each of the following situations, a significant nexus exists if the tributary, in combination with all of its adjacent wetlands, has more than a speculative or insubstantial effect on the chemical, physical and/or biological integrity of a TNW. Considerations when evaluating significant nexus include, but are not limited to the volume, duration, and frequency of the flow of water in the tributary and its proximity to a TNW, and the functions performed by the tributary and all its adjacent wetlands. It is not appropriate to determine significant nexus based solely on any specific threshold of distance (e.g. between a tributary and its adjacent wetland or between a tributary and the TNW). Similarly, the fact an adjacent wetland lies within or outside of a floodplain is not solely determinative of significant nexus.

Draw connections between the features documented and the effects on the TNW, as identified in the *Rapanos* Guidance and discussed in the Instructional Guidebook. Factors to consider include, for example:

- Does the tributary, in combination with its adjacent wetlands (if any), have the capacity to carry pollutants or flood waters to TNWs, or to reduce the amount of pollutants or flood waters reaching a TNW?
- Does the tributary, in combination with its adjacent wetlands (if any), provide habitat and lifecycle support functions for fish and other species, such as feeding, nesting, spawning, or rearing young for species that are present in the TNW?
- Does the tributary, in combination with its adjacent wetlands (if any), have the capacity to transfer nutrients and organic carbon that support downstream foodwebs?
- Does the tributary, in combination with its adjacent wetlands (if any), have other relationships to the physical, chemical, or biological integrity of the TNW?

**Note: the above list of considerations is not inclusive and other functions observed or known to occur should be documented below:**

1. **Significant nexus findings for non-RPW that has no adjacent wetlands and flows directly or indirectly into TNWs.** Explain findings of presence or absence of significant nexus below, based on the tributary itself, then go to Section III.D: .
2. **Significant nexus findings for non-RPW and its adjacent wetlands, where the non-RPW flows directly or indirectly into TNWs.** Explain findings of presence or absence of significant nexus below, based on the tributary in combination with all of its adjacent wetlands, then go to Section III.D: .
3. **Significant nexus findings for wetlands adjacent to an RPW but that do not directly abut the RPW.** Explain findings of presence or absence of significant nexus below, based on the tributary in combination with all of its adjacent wetlands, then go to Section III.D: .

**D. DETERMINATIONS OF JURISDICTIONAL FINDINGS. THE SUBJECT WATERS/WETLANDS ARE (CHECK ALL THAT APPLY):**

1. **TNWs and Adjacent Wetlands.** Check all that apply and provide size estimates in review area:
  - TNWs:      linear feet      width (ft), Or,      acres.
  - Wetlands adjacent to TNWs:      acres.
2. **RPWs that flow directly or indirectly into TNWs.**
  - Tributaries of TNWs where tributaries typically flow year-round are jurisdictional. Provide data and rationale indicating that tributary is perennial:
  - Tributaries of TNW where tributaries have continuous flow "seasonally" (e.g., typically three months each year) are jurisdictional. Data supporting this conclusion is provided at Section III.B. Provide rationale indicating that tributary flows seasonally:

Provide estimates for jurisdictional waters in the review area (check all that apply):

- Tributary waters:  
 Other non-wetland waters:          acres.  
 Identify type(s) of waters:          .

**3. Non-RPWs<sup>8</sup> that flow directly or indirectly into TNWs.**

- Waterbody that is not a TNW or an RPW, but flows directly or indirectly into a TNW, and it has a significant nexus with a TNW is jurisdictional. Data supporting this conclusion is provided at Section III.C.

Provide estimates for jurisdictional waters within the review area (check all that apply):

- Tributary waters:          linear feet          width (ft).  
 Other non-wetland waters:          acres.  
 Identify type(s) of waters:          .

**4. Wetlands directly abutting an RPW that flow directly or indirectly into TNWs.**

- Wetlands directly abut RPW and thus are jurisdictional as adjacent wetlands.  
 Wetlands directly abutting an RPW where tributaries typically flow year-round. Provide data and rationale indicating that tributary is perennial in Section III.D.2, above. Provide rationale indicating that wetland is directly abutting an RPW:  
  
 Wetlands directly abutting an RPW where tributaries typically flow "seasonally." Provide data indicating that tributary is seasonal in Section III.B and rationale in Section III.D.2, above. Provide rationale indicating that wetland is directly abutting an RPW:  
 .

Provide acreage estimates for jurisdictional wetlands in the review area:          acre.

**5. Wetlands adjacent to but not directly abutting an RPW that flow directly or indirectly into TNWs.**

- Wetlands that do not directly abut an RPW, but when considered in combination with the tributary to which they are adjacent and with similarly situated adjacent wetlands, have a significant nexus with a TNW are jurisdictional. Data supporting this conclusion is provided at Section III.C.

Provide acreage estimates for jurisdictional wetlands in the review area:          acres.

**6. Wetlands adjacent to non-RPWs that flow directly or indirectly into TNWs.**

- Wetlands adjacent to such waters, and have when considered in combination with the tributary to which they are adjacent and with similarly situated adjacent wetlands, have a significant nexus with a TNW are jurisdictional. Data supporting this conclusion is provided at Section III.C.

Provide estimates for jurisdictional wetlands in the review area:          acres.

**7. Impoundments of jurisdictional waters.<sup>9</sup>**

As a general rule, the impoundment of a jurisdictional tributary remains jurisdictional.

- Demonstrate that impoundment was created from "waters of the U.S.," or  
 Demonstrate that water meets the criteria for one of the categories presented above (1-6), or  
 Demonstrate that water is isolated with a nexus to commerce (see E below).

**E. ISOLATED [INTERSTATE OR INTRA-STATE] WATERS, INCLUDING ISOLATED WETLANDS, THE USE, DEGRADATION OR DESTRUCTION OF WHICH COULD AFFECT INTERSTATE COMMERCE, INCLUDING ANY SUCH WATERS (CHECK ALL THAT APPLY):<sup>10</sup>**

- which are or could be used by interstate or foreign travelers for recreational or other purposes.  
 from which fish or shellfish are or could be taken and sold in interstate or foreign commerce.  
 which are or could be used for industrial purposes by industries in interstate commerce.  
 Interstate isolated waters. Explain:          .  
 Other factors. Explain:          .

**Identify water body and summarize rationale supporting determination:**          .

Provide estimates for jurisdictional waters in the review area (check all that apply):

- Tributary waters:          linear feet          width (ft).

<sup>8</sup>See Footnote # 3.

<sup>9</sup>To complete the analysis refer to the key in Section III.D.6 of the Instructional Guidebook.

<sup>10</sup> Prior to asserting or declining CWA jurisdiction based solely on this category, Corps Districts will elevate the action to Corps and EPA HQ for review consistent with the process described in the Corps/EPA Memorandum Regarding CWA Act Jurisdiction Following Rapanos.

- Other non-wetland waters:      acres.  
Identify type(s) of waters:      .
- Wetlands:      acres.

**F. NON-JURISDICTIONAL WATERS, INCLUDING WETLANDS (CHECK ALL THAT APPLY):**

- If potential wetlands were assessed within the review area, these areas did not meet the criteria in the 1987 Corps of Engineers Wetland Delineation Manual and/or appropriate Regional Supplements.
- Review area included isolated waters with no substantial nexus to interstate (or foreign) commerce.  
 Prior to the Jan 2001 Supreme Court decision in "SWANCC," the review area would have been regulated based solely on the "Migratory Bird Rule" (MBR).
- Waters do not meet the "Significant Nexus" standard, where such a finding is required for jurisdiction. Explain:      .
- Other: (explain, if not covered above): **See Section II.B.2 above**

Provide acreage estimates for non-jurisdictional waters in the review area, where the sole potential basis of jurisdiction is the MBR factors (i.e., presence of migratory birds, presence of endangered species, use of water for irrigated agriculture), using best professional judgment (check all that apply):

- Non-wetland waters (i.e., rivers, streams):      linear feet      width (ft).
- Lakes/ponds:      acres.
- Other non-wetland waters:      acres. List type of aquatic resource:      .
- Wetlands:      acres.

Provide acreage estimates for non-jurisdictional waters in the review area that do not meet the "Significant Nexus" standard, where such a finding is required for jurisdiction (check all that apply):

- Non-wetland waters (i.e., rivers, streams):      linear feet,      width (ft).
- Lakes/ponds:      acres.
- Other non-wetland waters:      acres. List type of aquatic resource:      .
- Wetlands:      acres.

**SECTION IV: DATA SOURCES.**

**A. SUPPORTING DATA. Data reviewed for JD (check all that apply - checked items shall be included in case file and, where checked and requested, appropriately reference sources below):**

- Maps, plans, plots or plat submitted by or on behalf of the applicant/consultant: **Wetlands/Waters of the U.S. Delineation Report for State Highway 119 Mobility Improvements, Boulder County, CDOT, dated September 8, 2021, revised April 28, 2022.**
- Data sheets prepared/submitted by or on behalf of the applicant/consultant.  
 Office concurs with data sheets/delineation report.  
 Office does not concur with data sheets/delineation report.
- Data sheets prepared by the Corps:      .
- Corps navigable waters' study:      .
- U.S. Geological Survey Hydrologic Atlas:      .  
 USGS NHD data.  
 USGS 8 and 12 digit HUC maps.
- U.S. Geological Survey map(s). Cite scale & quad name:      .
- USDA Natural Resources Conservation Service Soil Survey. Citation:      .
- National wetlands inventory map(s). Cite name:      .
- State/Local wetland inventory map(s):      .
- FEMA/FIRM maps:      .
- 100-year Floodplain Elevation is:      (National Geodectic Vertical Datum of 1929)
- Photographs:  Aerial (Name & Date):      .  
or  Other (Name & Date):      .
- Previous determination(s). File no. and date of response letter:      .
- Applicable/supporting case law:      .
- Applicable/supporting scientific literature:      .
- Other information (please specify):      .

**B. ADDITIONAL COMMENTS TO SUPPORT JD:**

**APPROVED JURISDICTIONAL DETERMINATION FORM**  
**U.S. Army Corps of Engineers**

This form should be completed by following the instructions provided in Section IV of the JD Form Instructional Guidebook.

**SECTION I: BACKGROUND INFORMATION**

**A. REPORT COMPLETION DATE FOR APPROVED JURISDICTIONAL DETERMINATION (JD):** July 27, 2022

**B. DISTRICT OFFICE, FILE NAME, AND NUMBER:**

Denver Regulatory Office  
 State Highway 119 Mobility Improvements  
 NWO-2021-01613-DEN

**C. PROJECT LOCATION AND BACKGROUND INFORMATION:**

State: CO County/parish/borough: Boulder City: Longmont to Boulder  
 Center coordinates of site (lat/long in degree decimal format): Lat. 40.0892194° N, Long -105.1899500° W  
 Name of nearest waterbody: Wonderland Creek  
 Name of nearest Traditional Navigable Water (TNW) into which the aquatic resource flows: St. Vrain River  
 Name of watershed or Hydrologic Unit Code (HUC): 10190005

- Check if map/diagram of review area and/or potential jurisdictional areas is/are available upon request.  
 Check if other sites (e.g., offsite mitigation sites, disposal sites, etc...) are associated with this action and are recorded on a different JD form.

**D. REVIEW PERFORMED FOR SITE EVALUATION (CHECK ALL THAT APPLY):**

- Office (Desk) Determination. Date: July 27, 2022  
 Field Determination. Date(s): May 5, 2022

**SECTION II: SUMMARY OF FINDINGS**

**A. RHA SECTION 10 DETERMINATION OF JURISDICTION.**

There **Are no** "navigable waters of the U.S." within Rivers and Harbors Act (RHA) jurisdiction (as defined by 33 CFR part 329) in the review area. [Required]

- Waters subject to the ebb and flow of the tide.  
 Waters are presently used, or have been used in the past, or may be susceptible for use to transport interstate or foreign commerce. Explain: .

**B. CWA SECTION 404 DETERMINATION OF JURISDICTION.**

There **Are** "waters of the U.S." within Clean Water Act (CWA) jurisdiction (as defined by 33 CFR part 328) in the review area. [Required]

**1. Waters of the U.S.**

**a. Indicate presence of waters of U.S. in review area (check all that apply):** <sup>1</sup>

- TNWs, including territorial seas  
 Wetlands adjacent to TNWs  
 Relatively permanent waters<sup>2</sup> (RPWs) that flow directly or indirectly into TNWs  
 Non-RPWs that flow directly or indirectly into TNWs  
 Wetlands directly abutting RPWs that flow directly or indirectly into TNWs  
 Wetlands adjacent to but not directly abutting RPWs that flow directly or indirectly into TNWs  
 Wetlands adjacent to non-RPWs that flow directly or indirectly into TNWs  
 Impoundments of jurisdictional waters  
 Isolated (interstate or intrastate) waters, including isolated wetlands

**b. Identify (estimate) size of waters of the U.S. in the review area:** Wonderland Creek wetlands

Non-wetland waters: linear feet: ~ 625  
 Wetlands: Wetlands 3-E-1 and 3-E-2: 0.06 acre.

**c. Limits (boundaries) of jurisdiction based on:**

Elevation of established OHWM (if known): .

**2. Non-regulated waters/wetlands (check if applicable):**<sup>3</sup>

- Potentially jurisdictional waters and/or wetlands were assessed within the review area and determined to be not jurisdictional. Explain:

<sup>1</sup> Boxes checked below shall be supported by completing the appropriate sections in Section III below.

<sup>2</sup> For purposes of this form, an RPW is defined as a tributary that is not a TNW and that typically flows year-round or has continuous flow at least "seasonally" (e.g., typically 3 months).

<sup>3</sup> Supporting documentation is presented in Section III.F.

**SECTION III: CWA ANALYSIS****A. TNWs AND WETLANDS ADJACENT TO TNWs**

The agencies will assert jurisdiction over TNWs and wetlands adjacent to TNWs. If the aquatic resource is a TNW, complete Section III.A.1 and Section III.D.1. only; if the aquatic resource is a wetland adjacent to a TNW, complete Sections III.A.1 and 2 and Section III.D.1.; otherwise, see Section III.B below.

**1. TNW**

Identify TNW: .

Summarize rationale supporting determination: .

**2. Wetland adjacent to TNW**

Summarize rationale supporting conclusion that wetland is “adjacent”:

**B. CHARACTERISTICS OF TRIBUTARY (THAT IS NOT A TNW) AND ITS ADJACENT WETLANDS (IF ANY):**

This section summarizes information regarding characteristics of the tributary and its adjacent wetlands, if any, and it helps determine whether or not the standards for jurisdiction established under *Rapanos* have been met.

The agencies will assert jurisdiction over non-navigable tributaries of TNWs where the tributaries are “relatively permanent waters” (RPWs), i.e. tributaries that typically flow year-round or have continuous flow at least seasonally (e.g., typically 3 months). A wetland that directly abuts an RPW is also jurisdictional. If the aquatic resource is not a TNW, but has year-round (perennial) flow, skip to Section III.D.2. If the aquatic resource is a wetland directly abutting a tributary with perennial flow, skip to Section III.D.4.

A wetland that is adjacent to but that does not directly abut an RPW requires a significant nexus evaluation. Corps districts and EPA regions will include in the record any available information that documents the existence of a significant nexus between a relatively permanent tributary that is not perennial (and its adjacent wetlands if any) and a traditional navigable water, even though a significant nexus finding is not required as a matter of law.

If the waterbody<sup>4</sup> is not an RPW, or a wetland directly abutting an RPW, a JD will require additional data to determine if the waterbody has a significant nexus with a TNW. If the tributary has adjacent wetlands, the significant nexus evaluation must consider the tributary in combination with all of its adjacent wetlands. This significant nexus evaluation that combines, for analytical purposes, the tributary and all of its adjacent wetlands is used whether the review area identified in the JD request is the tributary, or its adjacent wetlands, or both. If the JD covers a tributary with adjacent wetlands, complete Section III.B.1 for the tributary, Section III.B.2 for any onsite wetlands, and Section III.B.3 for all wetlands adjacent to that tributary, both onsite and offsite. The determination whether a significant nexus exists is determined in Section III.C below.

**1. Characteristics of non-TNWs that flow directly or indirectly into TNW****(i) General Area Conditions:**

Watershed size: **Pick List**  
 Drainage area: **Pick List**  
 Average annual rainfall: inches  
 Average annual snowfall: inches

**(ii) Physical Characteristics:****(a) Relationship with TNW:**

- Tributary flows directly into TNW.  
 Tributary flows through **Pick List** tributaries before entering TNW.

Project waters are **Pick List** river miles from TNW.  
 Project waters are **Pick List** river miles from RPW.  
 Project waters are **Pick List** aerial (straight) miles from TNW.  
 Project waters are **Pick List** aerial (straight) miles from RPW.  
 Project waters cross or serve as state boundaries. Explain: .

<sup>4</sup> Note that the Instructional Guidebook contains additional information regarding swales, ditches, washes, and erosional features generally and in the arid West.



Identify flow route to TNW<sup>5</sup>:  
Tributary stream order, if known:

(b) **General Tributary Characteristics (check all that apply):**

**Tributary is:**  Natural  
 Artificial (man-made). Explain:  
 Manipulated (man-altered). Explain:

**Tributary properties with respect to top of bank (estimate):**

Average width: feet  
Average depth: feet  
Average side slopes: **Pick List**.

Primary tributary substrate composition (check all that apply):

Silts  Sands  Concrete  
 Cobbles  Gravel  Muck  
 Bedrock  Vegetation. Type/% cover:  
 Other. Explain:

Tributary condition/stability [e.g., highly eroding, sloughing banks]. Explain:

Presence of run/riffle/pool complexes. Explain:

Tributary geometry: **Pick List**

Tributary gradient (approximate average slope): %

(c) **Flow:**

Tributary provides for: **Pick List**

Estimate average number of flow events in review area/year: **Pick List**

Describe flow regime:

Other information on duration and volume:

Surface flow is: **Pick List**. Characteristics:

Subsurface flow: **Pick List**. Explain findings:

Dye (or other) test performed:

Tributary has (check all that apply):

Bed and banks  
 OHWM<sup>6</sup> (check all indicators that apply):  
 clear, natural line impressed on the bank  the presence of litter and debris  
 changes in the character of soil  destruction of terrestrial vegetation  
 shelving  the presence of wrack line  
 vegetation matted down, bent, or absent  sediment sorting  
 leaf litter disturbed or washed away  scour  
 sediment deposition  multiple observed or predicted flow events  
 water staining  abrupt change in plant community  
 other (list):  
 Discontinuous OHWM.<sup>7</sup> Explain:

If factors other than the OHWM were used to determine lateral extent of CWA jurisdiction:

High Tide Line indicated by:  Mean High Water Mark indicated by:  
 oil or scum line along shore objects  survey to available datum;  
 fine shell or debris deposits (foreshore)  physical markings;  
 physical markings/characteristics  vegetation lines/changes in vegetation types.  
 tidal gauges  
 other (list):

(iii) **Chemical Characteristics:**

Characterize tributary (e.g., water color is clear, discolored, oily film; water quality; general watershed characteristics, etc.). Explain:

<sup>5</sup> Flow route can be described by identifying, e.g., tributary a, which flows through the review area, to flow into tributary b, which then flows into TNW.

<sup>6</sup>A natural or man-made discontinuity in the OHWM does not necessarily sever jurisdiction (e.g., where the stream temporarily flows underground, or where the OHWM has been removed by development or agricultural practices). Where there is a break in the OHWM that is unrelated to the waterbody's flow regime (e.g., flow over a rock outcrop or through a culvert), the agencies will look for indicators of flow above and below the break.

<sup>7</sup>Ibid.

Identify specific pollutants, if known:

**(iv) Biological Characteristics. Channel supports (check all that apply):**

- Riparian corridor. Characteristics (type, average width):
- Wetland fringe. Characteristics:
- Habitat for:
  - Federally Listed species. Explain findings:
  - Fish/spawn areas. Explain findings:
  - Other environmentally-sensitive species. Explain findings:
  - Aquatic/wildlife diversity. Explain findings:

**2. Characteristics of wetlands adjacent to non-TNW that flow directly or indirectly into TNW**

**(i) Physical Characteristics:**

**(a) General Wetland Characteristics:**

Properties:

Wetland size: \_\_\_\_\_ acres

Wetland type. Explain:

Wetland quality. Explain:

Project wetlands cross or serve as state boundaries. Explain:

**(b) General Flow Relationship with Non-TNW:**

Flow is: **Pick List**. Explain:

Surface flow is: **Pick List**

Characteristics:

Subsurface flow: **Pick List**. Explain findings:

Dye (or other) test performed:

**(c) Wetland Adjacency Determination with Non-TNW:**

- Directly abutting
- Not directly abutting
  - Discrete wetland hydrologic connection. Explain:
  - Ecological connection. Explain:
  - Separated by berm/barrier. Explain:

**(d) Proximity (Relationship) to TNW**

Project wetlands are **Pick List** river miles from TNW.

Project waters are **Pick List** aerial (straight) miles from TNW.

Flow is from: **Pick List**.

Estimate approximate location of wetland as within the **Pick List** floodplain.

**(ii) Chemical Characteristics:**

Characterize wetland system (e.g., water color is clear, brown, oil film on surface; water quality; general watershed characteristics; etc.). Explain:

Identify specific pollutants, if known:

**(iii) Biological Characteristics. Wetland supports (check all that apply):**

- Riparian buffer. Characteristics (type, average width):
- Vegetation type/percent cover. Explain:
- Habitat for:
  - Federally Listed species. Explain findings:
  - Fish/spawn areas. Explain findings:
  - Other environmentally-sensitive species. Explain findings:
  - Aquatic/wildlife diversity. Explain findings:

**3. Characteristics of all wetlands adjacent to the tributary (if any)**

All wetland(s) being considered in the cumulative analysis: **Pick List**

Approximately ( ) acres in total are being considered in the cumulative analysis.

For each wetland, specify the following:

Directly abuts? (Y/N)

Size (in acres)

Directly abuts? (Y/N)

Size (in acres)

Summarize overall biological, chemical and physical functions being performed:

### C. SIGNIFICANT NEXUS DETERMINATION

A significant nexus analysis will assess the flow characteristics and functions of the tributary itself and the functions performed by any wetlands adjacent to the tributary to determine if they significantly affect the chemical, physical, and biological integrity of a TNW. For each of the following situations, a significant nexus exists if the tributary, in combination with all of its adjacent wetlands, has more than a speculative or insubstantial effect on the chemical, physical and/or biological integrity of a TNW. Considerations when evaluating significant nexus include, but are not limited to the volume, duration, and frequency of the flow of water in the tributary and its proximity to a TNW, and the functions performed by the tributary and all its adjacent wetlands. It is not appropriate to determine significant nexus based solely on any specific threshold of distance (e.g. between a tributary and its adjacent wetland or between a tributary and the TNW). Similarly, the fact an adjacent wetland lies within or outside of a floodplain is not solely determinative of significant nexus.

Draw connections between the features documented and the effects on the TNW, as identified in the *Rapanos* Guidance and discussed in the Instructional Guidebook. Factors to consider include, for example:

- Does the tributary, in combination with its adjacent wetlands (if any), have the capacity to carry pollutants or flood waters to TNWs, or to reduce the amount of pollutants or flood waters reaching a TNW?
- Does the tributary, in combination with its adjacent wetlands (if any), provide habitat and lifecycle support functions for fish and other species, such as feeding, nesting, spawning, or rearing young for species that are present in the TNW?
- Does the tributary, in combination with its adjacent wetlands (if any), have the capacity to transfer nutrients and organic carbon that support downstream foodwebs?
- Does the tributary, in combination with its adjacent wetlands (if any), have other relationships to the physical, chemical, or biological integrity of the TNW?

**Note: the above list of considerations is not inclusive and other functions observed or known to occur should be documented below:**

1. **Significant nexus findings for non-RPW that has no adjacent wetlands and flows directly or indirectly into TNWs.** Explain findings of presence or absence of significant nexus below, based on the tributary itself, then go to Section III.D:
2. **Significant nexus findings for non-RPW and its adjacent wetlands, where the non-RPW flows directly or indirectly into TNWs.** Explain findings of presence or absence of significant nexus below, based on the tributary in combination with all of its adjacent wetlands, then go to Section III.D:
3. **Significant nexus findings for wetlands adjacent to an RPW but that do not directly abut the RPW.** Explain findings of presence or absence of significant nexus below, based on the tributary in combination with all of its adjacent wetlands, then go to Section III.D:

### D. DETERMINATIONS OF JURISDICTIONAL FINDINGS. THE SUBJECT WATERS/WETLANDS ARE (CHECK ALL THAT APPLY):

1. **TNWs and Adjacent Wetlands.** Check all that apply and provide size estimates in review area:
  - TNWs: linear feet width (ft), Or, acres.
  - Wetlands adjacent to TNWs: acres.
2. **RPWs that flow directly or indirectly into TNWs.**
  - Tributaries of TNWs where tributaries typically flow year-round are jurisdictional. Provide data and rationale indicating that tributary is perennial:
  - Tributaries of TNW where tributaries have continuous flow "seasonally" (e.g., typically three months each year) are jurisdictional. Data supporting this conclusion is provided at Section III.B. Provide rationale indicating that tributary flows seasonally: **Wonderland Creek is a historic irrigation ditch that is utilized to transmit stormwater flows. Hydrology is supplemented with lawn irrigation return flows and other urban "drool". Flow is seasonal but relatively permanent.**

Provide estimates for jurisdictional waters in the review area (check all that apply):

- Tributary waters: ~ 0.06 acre
  - Other non-wetland waters: acres.
- Identify type(s) of waters:

3. **Non-RPWs<sup>8</sup> that flow directly or indirectly into TNWs.**

<sup>8</sup>See Footnote # 3.

- Waterbody that is not a TNW or an RPW, but flows directly or indirectly into a TNW, and it has a significant nexus with a TNW is jurisdictional. Data supporting this conclusion is provided at Section III.C.

Provide estimates for jurisdictional waters within the review area (check all that apply):

- Tributary waters:            linear feet            width (ft).  
 Other non-wetland waters:            acres.  
 Identify type(s) of waters:            .

**4. Wetlands directly abutting an RPW that flow directly or indirectly into TNWs.**

- Wetlands directly abut RPW and thus are jurisdictional as adjacent wetlands.  
 Wetlands directly abutting an RPW where tributaries typically flow year-round. Provide data and rationale indicating that tributary is perennial in Section III.D.2, above. Provide rationale indicating that wetland is directly abutting an RPW: **Wetlands 3-E-1 and 3-E-2 are within the OHWM of Wonderland Creek.**  
 Wetlands directly abutting an RPW where tributaries typically flow "seasonally." Provide data indicating that tributary is seasonal in Section III.B and rationale in Section III.D.2, above. Provide rationale indicating that wetland is directly abutting an RPW:            .

Provide acreage estimates for jurisdictional wetlands in the review area: **0.02** acre.

**5. Wetlands adjacent to but not directly abutting an RPW that flow directly or indirectly into TNWs.**

- Wetlands that do not directly abut an RPW, but when considered in combination with the tributary to which they are adjacent and with similarly situated adjacent wetlands, have a significant nexus with a TNW are jurisdictional. Data supporting this conclusion is provided at Section III.C.

Provide acreage estimates for jurisdictional wetlands in the review area:            acres.

**6. Wetlands adjacent to non-RPWs that flow directly or indirectly into TNWs.**

- Wetlands adjacent to such waters, and have when considered in combination with the tributary to which they are adjacent and with similarly situated adjacent wetlands, have a significant nexus with a TNW are jurisdictional. Data supporting this conclusion is provided at Section III.C.

Provide estimates for jurisdictional wetlands in the review area:            acres.

**7. Impoundments of jurisdictional waters.<sup>9</sup>**

As a general rule, the impoundment of a jurisdictional tributary remains jurisdictional.

- Demonstrate that impoundment was created from "waters of the U.S.," or  
 Demonstrate that water meets the criteria for one of the categories presented above (1-6), or  
 Demonstrate that water is isolated with a nexus to commerce (see E below).

**E. ISOLATED [INTERSTATE OR INTRA-STATE] WATERS, INCLUDING ISOLATED WETLANDS, THE USE, DEGRADATION OR DESTRUCTION OF WHICH COULD AFFECT INTERSTATE COMMERCE, INCLUDING ANY SUCH WATERS (CHECK ALL THAT APPLY):<sup>10</sup>**

- which are or could be used by interstate or foreign travelers for recreational or other purposes.  
 from which fish or shellfish are or could be taken and sold in interstate or foreign commerce.  
 which are or could be used for industrial purposes by industries in interstate commerce.  
 Interstate isolated waters. Explain:            .  
 Other factors. Explain:            .

**Identify water body and summarize rationale supporting determination:**            .

Provide estimates for jurisdictional waters in the review area (check all that apply):

- Tributary waters:            linear feet            width (ft).  
 Other non-wetland waters:            acres.  
 Identify type(s) of waters:            .  
 Wetlands:            acres.

**F. NON-JURISDICTIONAL WATERS, INCLUDING WETLANDS (CHECK ALL THAT APPLY):**

- If potential wetlands were assessed within the review area, these areas did not meet the criteria in the 1987 Corps of Engineers Wetland Delineation Manual and/or appropriate Regional Supplements.

<sup>9</sup> To complete the analysis refer to the key in Section III.D.6 of the Instructional Guidebook.

<sup>10</sup> Prior to asserting or declining CWA jurisdiction based solely on this category, Corps Districts will elevate the action to Corps and EPA HQ for review consistent with the process described in the Corps/EPA Memorandum Regarding CWA Act Jurisdiction Following *Rapanos*.

- Review area included isolated waters with no substantial nexus to interstate (or foreign) commerce.  
 Prior to the Jan 2001 Supreme Court decision in "SWANCC," the review area would have been regulated based solely on the "Migratory Bird Rule" (MBR).
- Waters do not meet the "Significant Nexus" standard, where such a finding is required for jurisdiction. Explain: \_\_\_\_\_
- Other: (explain, if not covered above): \_\_\_\_\_

Provide acreage estimates for non-jurisdictional waters in the review area, where the sole potential basis of jurisdiction is the MBR factors (i.e., presence of migratory birds, presence of endangered species, use of water for irrigated agriculture), using best professional judgment (check all that apply):

- Non-wetland waters (i.e., rivers, streams): \_\_\_\_\_ linear feet \_\_\_\_\_ width (ft).  
 Lakes/ponds: \_\_\_\_\_ acres.  
 Other non-wetland waters: \_\_\_\_\_ acres. List type of aquatic resource: \_\_\_\_\_  
 Wetlands: \_\_\_\_\_ acres.

Provide acreage estimates for non-jurisdictional waters in the review area that do not meet the "Significant Nexus" standard, where such a finding is required for jurisdiction (check all that apply):

- Non-wetland waters (i.e., rivers, streams): \_\_\_\_\_ linear feet, \_\_\_\_\_ width (ft).  
 Lakes/ponds: \_\_\_\_\_ acres.  
 Other non-wetland waters: \_\_\_\_\_ acres. List type of aquatic resource: \_\_\_\_\_  
 Wetlands: \_\_\_\_\_ acres.

#### **SECTION IV: DATA SOURCES.**

##### **A. SUPPORTING DATA. Data reviewed for JD (check all that apply - checked items shall be included in case file and, where checked and requested, appropriately reference sources below):**

- Maps, plans, plots or plat submitted by or on behalf of the applicant/consultant: **Wetlands/Waters of the U.S. Delineation Report for State Highway 119 Mobility Improvements, Boulder County, CDOT, dated September 8, 2021.**
- Data sheets prepared/submitted by or on behalf of the applicant/consultant.  
 Office concurs with data sheets/delineation report.  
 Office does not concur with data sheets/delineation report.
- Data sheets prepared by the Corps: \_\_\_\_\_
- Corps navigable waters' study: \_\_\_\_\_
- U.S. Geological Survey Hydrologic Atlas: \_\_\_\_\_  
 USGS NHD data.  
 USGS 8 and 12 digit HUC maps.
- U.S. Geological Survey map(s). Cite scale & quad name: \_\_\_\_\_
- USDA Natural Resources Conservation Service Soil Survey. Citation: \_\_\_\_\_
- National wetlands inventory map(s). Cite name: \_\_\_\_\_
- State/Local wetland inventory map(s): \_\_\_\_\_
- FEMA/FIRM maps:  
 100-year Floodplain Elevation is: \_\_\_\_\_ (National Geodetic Vertical Datum of 1929)
- Photographs:  Aerial (Name & Date): \_\_\_\_\_  
or  Other (Name & Date): \_\_\_\_\_
- Previous determination(s). File no. and date of response letter: \_\_\_\_\_
- Applicable/supporting case law: \_\_\_\_\_
- Applicable/supporting scientific literature: \_\_\_\_\_
- Other information (please specify): \_\_\_\_\_

##### **B. ADDITIONAL COMMENTS TO SUPPORT JD:**

Figure 1						
Feature #	Wetland/WOUS	Acreege	Data Point (WL) or Name (WOUS)	Acreege	Corridor Location	Roadway Location
Panel 1-A						
1-A-1	Other Waters		Unnamed Ditch		North of Fordham	Entire
1-A-2	Wetland	2.67*	SP-41	Riverine/PEM/PSS	North of Fordham	Center median
1-A-3	Wetland	0.47		PEM	North of Fordham	West ROW
1-A-4	Wetland	0.68*		Riverine/PEM/PSS	North of Fordham	East ROW, north
1-A-5	Wetland	0.04	SP-43	PEM	North of Fordham	East ROW, south
Panel 1-B						
1-B-1	Other Waters		Lefthand Creek		Lefthand Creek	Entire
1-B-2	Wetland	0.19*	SP-39	Riverine/PEM/PSS	Lefthand Creek	Center Median, north and south of Creek
1-B-3	Wetland	0.07*		Riverine/PEM/PSS	Lefthand Creek	West ROW, north and south of Creek
1-B-4	Wetland	0.02*		Riverine/PEM/PSS	Lefthand Creek	East ROW, north and south of Creek
Panel 1-C						
1-C-1	Wetland	4.3	SP-37	PFO/PEM/PSS	Airport Rd	Center median, north
1-C-2	Wetland	0.48	SP-35	PFO/PSS/PEM	Airport Rd	Center median, south
Panel 1-D						
1-D-1	Other Waters		Unnamed Ditch		83 <sup>rd</sup> St	Center median, north
1-D-2	Wetland	0.01*		Riverine/PEM/PSS	83 <sup>rd</sup> St	Center median, north
1-D-3	Wetland	0.02		PEM	83 <sup>rd</sup> St	Center median, south
Panel 1-E						
1-E-1	Other Waters		Unnamed Ditch		South of Oxford Rd	Center median & east ROW
1-E-2	Wetland	0.1*		Riverine/PEM	South of Oxford Rd	Center median
1-E-3	Wetland	0.14*		Riverine/PSS/PEM	South of Oxford Rd	East ROW
Panel 1-F						
1-F-1	Other Waters		Unnamed Ditch		North of 77 <sup>th</sup> St	Center median
1-F-2	Wetland	0.04		Riverine/PEM	North of 77 <sup>th</sup> St	Center median
1-F-3	Wetland	0.01		PEM	North of 77 <sup>th</sup> St	East ROW

\* cumulative total of more than one non-contiguous wetlands

Figure 2						
Feature #	Wetland/WOUS	Acreage	Data Point (WL) or Name (WOUS)	Acreage	Corridor Location	Roadway Location
Panel 2-A						
2-A-1	Wetland	0.02		PEM	South of Monarch Rd	Center median
2-A-2	Wetland	<0.01		PEM	South of Monarch Rd	West ROW
2-A-3	Wetland	0.01		PEM	South of Monarch Rd	East ROW, south
2-A-4	Wetland	<0.01	SP-33	PEM	North of Monarch Rd	East ROW, north
Panel 2-B						
2-B-1	Wetland	0.02		PEM	North of 71 <sup>st</sup> St	Center median
2-B-2	Wetland	<0.01		PEM	North of 71 <sup>st</sup> St	West ROW
2-B-3	Wetland	0.02		PEM	North of 71 <sup>st</sup> St	East ROW
Panel 2-C						
2-C-1	Wetland	0.05*	SP-31	PEM	South of CO 52	Center median
2-C-2	Wetland	0.15	SP-29	PFO/PSS	South of CO 52	East ROW
2-C-3	Wetland	0.03		PEM	South of CO 52	Center median
2-C-4	Wetland	0.01		PEM	South of CO 52	West ROW
Panel 2-D						
2-D-1	Other Waters		Dry Creek		Dry Creek	Entire
2-D-2	Wetland	0.1*	SP-27	PEM	North of Dry Creek	Center median, north of Dry Creek
2-D-3	Wetland	0.23*	SP-25	PEM	South of Dry Creek	Center median, South of Dry Creek
2-D-4	Wetland	0.01*		Riverine/ PEM	North and south of Dry Creek	Center median (south of Creek) and West ROW (north of Creek)
2-D-5	Wetland	0.07		PEM	South of Dry Creek	Center median, ditch wetland
2-D-6	Other Waters		Unnamed Ditch		South of Dry Creek	East and west ROWs
Panel 2-E						
2-E-1	Wetland	0.04*		PEM	North of 63 <sup>rd</sup> St	Center median
2-E-2	Wetland	0.31	SP-23	PEM	North of 63 <sup>rd</sup> St	East ROW

\* cumulative total of more than one non-contiguous wetlands

Figure 3						
Feature #	Wetland/WOUS	Acreeage	Data Point (WL) or Name (WOUS)	Acreeage	Corridor Location	Roadway Location
Panel 3-A						
3-A-1	Other Waters		Unnamed Ditch (outflow from Boulder Reservoir)		South of 63 <sup>rd</sup> St	West ROW, center median
3-A-2	Wetland	1.49	SP-19	PEM	South of 63 <sup>rd</sup> St	Center median, north
3-A-3	Wetland	1.77	SP-21	PEM	South of 63 <sup>rd</sup> St	East ROW, north
3-A-4	Wetland	0.03	SP-17	PEM	South of 63 <sup>rd</sup> St	Center median, south
3-A-5	Wetland	0.03*	SP-15	PEM	South of 63 <sup>rd</sup> St	West ROW
3-A-6	Wetland	0.02*		PEM	South of 63 <sup>rd</sup> St	East ROW, south
3-A-7	Other Waters		Boulder White Rock Ditch (outflow from Sixmile Reservoir)		South of 63 <sup>rd</sup> St	Entire
Panel 3-B						
3-B-1	Other Waters		Boulder White Rock Ditch		South of 55 <sup>th</sup> St	Entire
3-B-2	Wetland	0.29*		Riverine/PSS	South of 55 <sup>th</sup> St	Center median, north
3-B-3	Wetland	0.78	SP-13	PEM	South of 55 <sup>th</sup> St	Center median, south
3-B-4	Wetland	0.01		PFO/PEM	South of 55 <sup>th</sup> St	East ROW
Panel 2-C						
3-C-1	Other Waters		Boulder White Rock Ditch		North and south of Jay Rd	Center median and east ROW north, entire south
3-C-2	Wetland	0.07*		Riverine/PEM	North of Jay Rd	Center median, adjacent to ditch and north
3-C-3	Wetland	0.54*	SP-11	PEM/PFO	North of Jay Rd	Center median, south of ditch
3-C-4	Wetland	0.08		PEM	North of Jay Rd	West ROW
3-C-5	Wetland	0.25	SP-9	PEM/PFO	North of Jay Rd	East ROW
3-C-6	Wetland	0.03		PEM	North of Jay Rd	Center median, culvert outlet
3-C-7	Wetland	0.35	SP-7	PEM	North of Jay Rd	Center median, south
3-C-8	Wetland	0.09*		Riverine	South of Jay Rd	Center median, adjacent to ditch (not shown in panel)

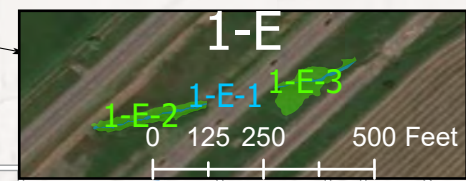
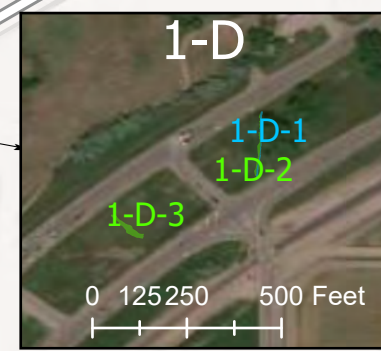
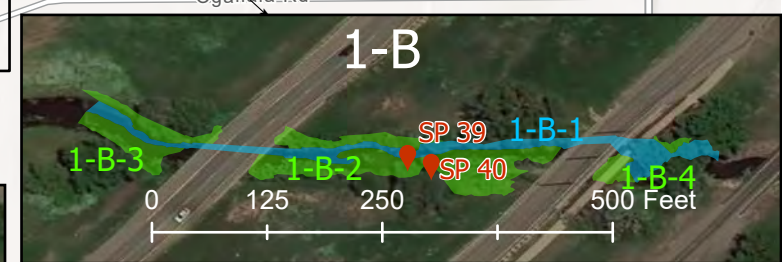
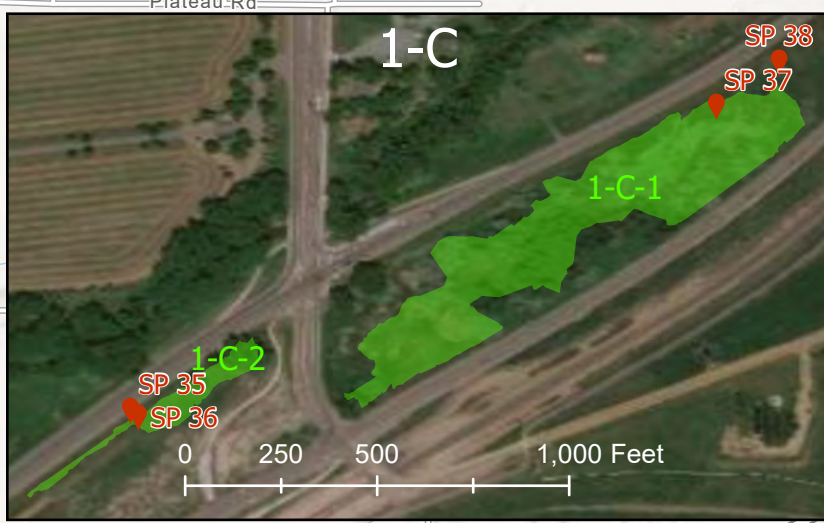
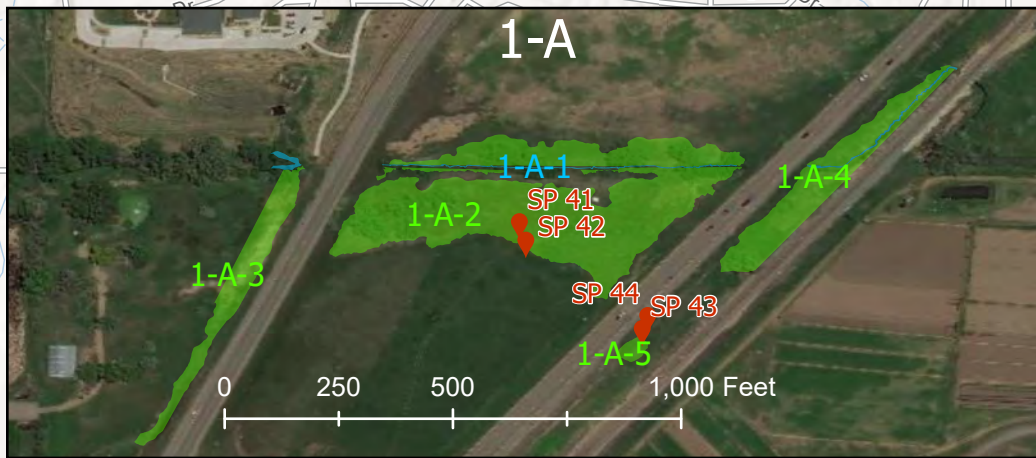
\* cumulative total of more than one non-contiguous wetlands



Figure 3 Continued						
Feature #	Wetland/WOUS	Acreage	Data Point (WL) or Name (WOUS)	Acreage	Corridor Location	Roadway Location
3-D-1	Other Waters		Fourmile Canyon Creek		Fourmile Canyon Creek	Entire
3-D-2	Wetland	0.15*	SP-5	PEM/PFO	North of Fourmile Canyon Creek	Center Median, north of Creek
3-D-3	Wetland	0.06	SP-3	PEM	North of Fourmile Canyon Creek	West ROW, north of Creek
3-D-4	Wetland	0.2*	SP-1	Riverine	Adjacent to Fourmile Canyon Creek	Entire
Panel 3-E						
3-E-1	Wetland	0.05	Creek entirely vegetated, no flowing water/OHWM	Riverine	Wonderland Creek	North ROW
3-E-2	Wetland	0.01	Creek entirely vegetated, no flowing water/OHWM	Riverine	Wonderland Creek	South ROW

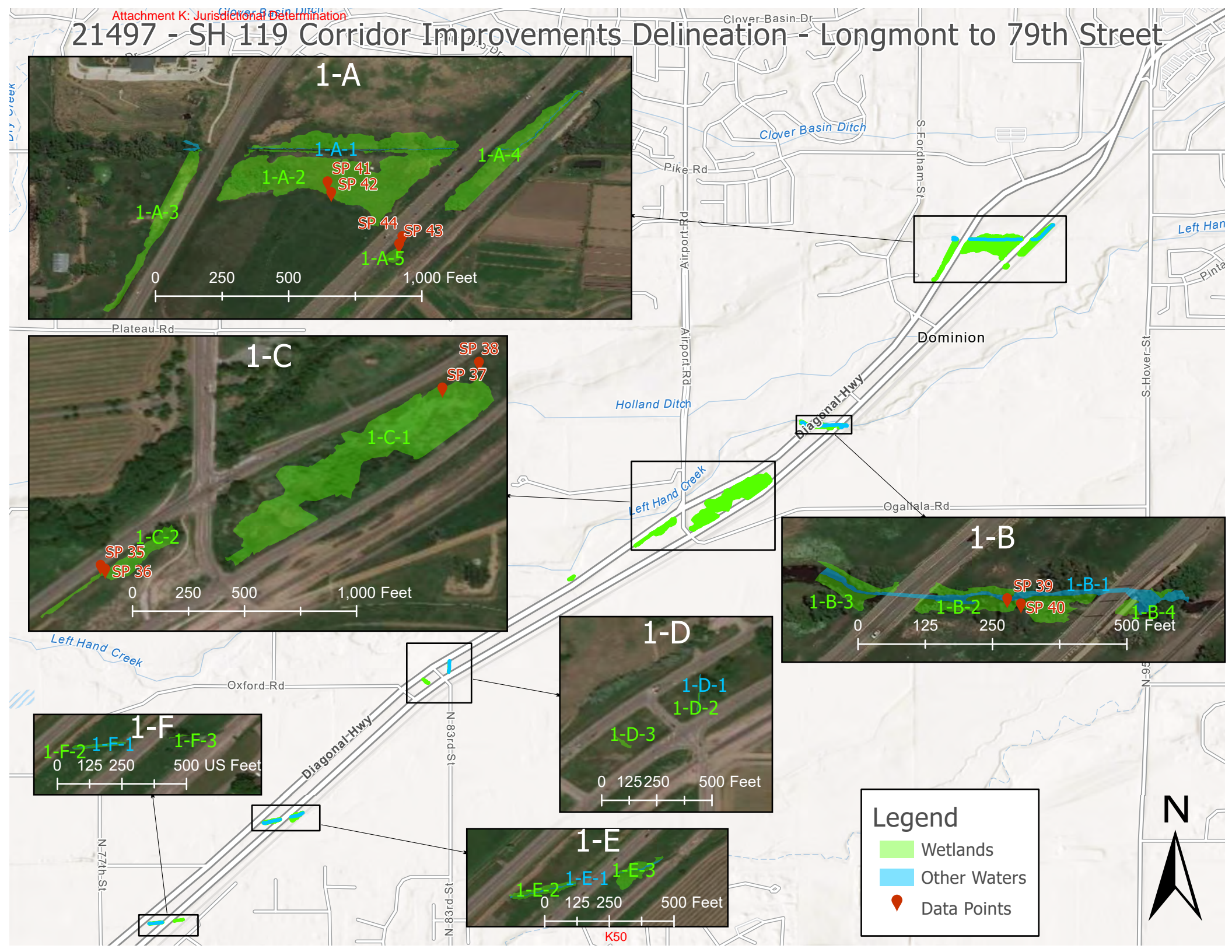
\* cumulative total of more than one non-contiguous wetlands

# 21497 - SH 119 Corridor Improvements Delineation - Longmont to 79th Street



**Legend**

- Wetlands
- Other Waters
- Data Points



# 21497 - SH 119 Corridor Improvements Delineation - 79th Street to 63rd Street

Attachment K: Jurisdictional Determination

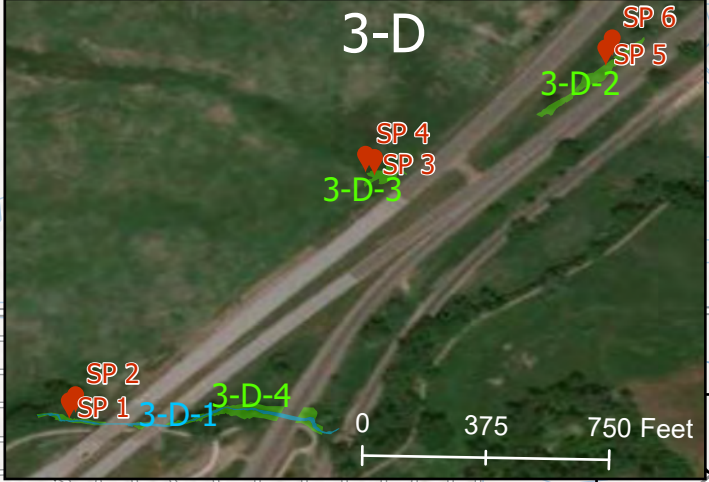
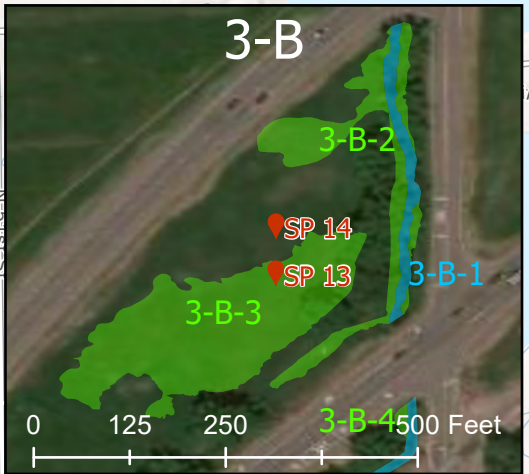
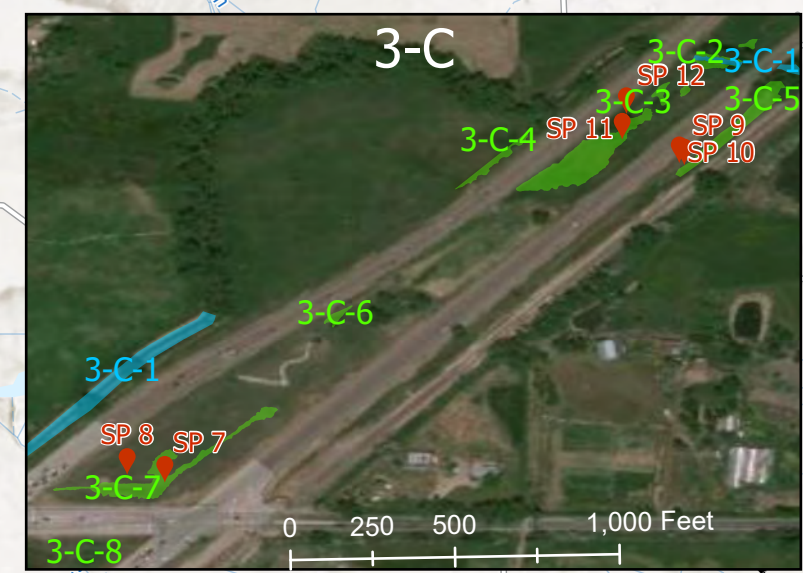


### Legend

- Wetlands
- Other Waters
- Data Points

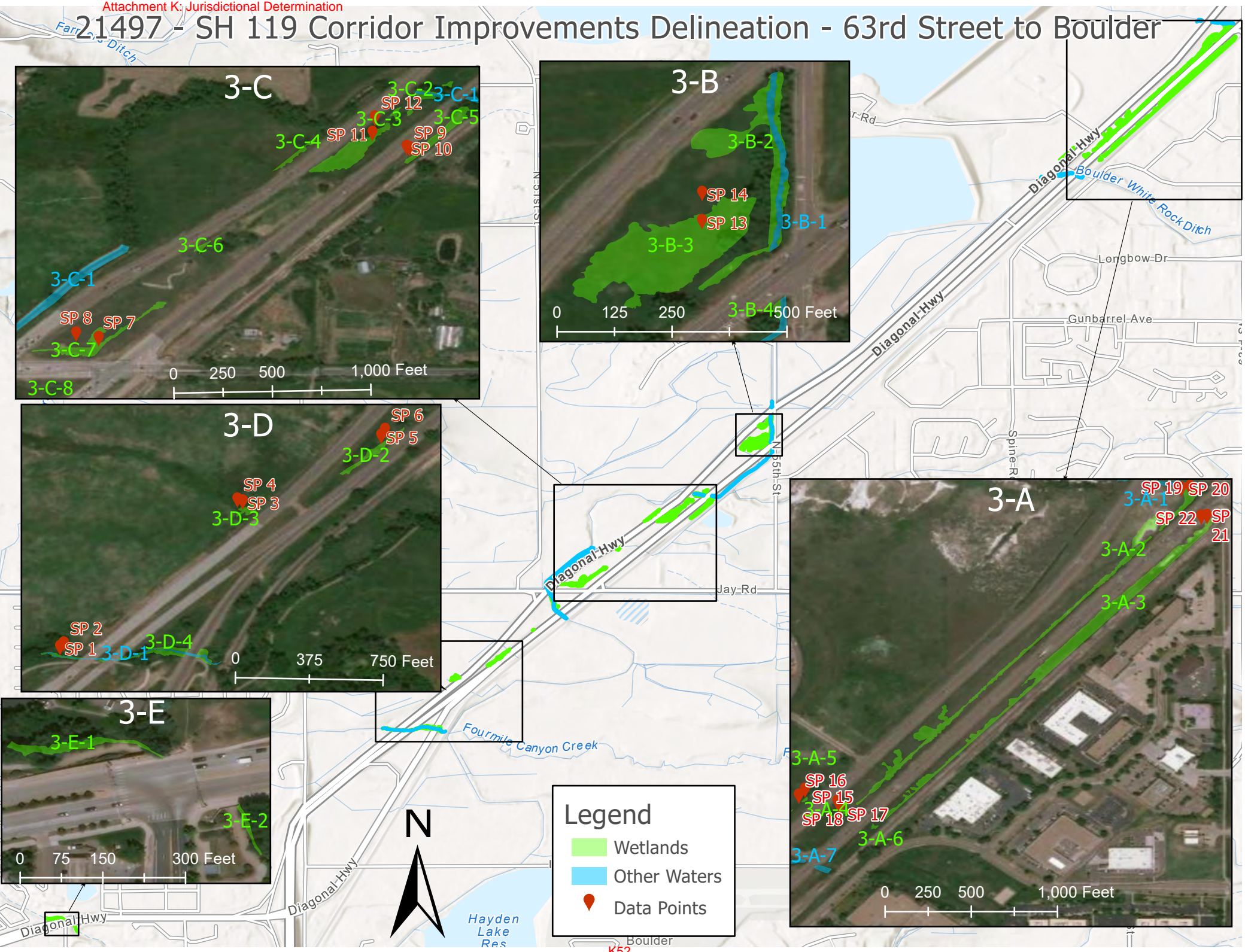
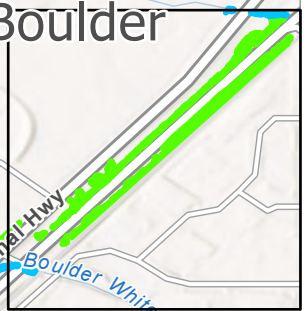
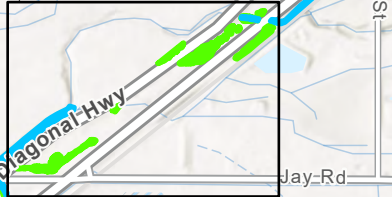
K51

# 21497 - SH 119 Corridor Improvements Delineation - 63rd Street to Boulder



**Legend**

- Wetlands
- Other Waters
- Data Points



## NOTIFICATION OF ADMINISTRATIVE APPEAL OPTIONS AND PROCESS AND REQUEST FOR APPEAL

Applicant: <b>Jason Roth, CDOT</b>	File Number: <b>NWO-2021-01613-DEN</b>	Date: <b>July 27, 2022</b>
Attached is:		See Section below
	INITIAL PROFFERED PERMIT (Standard Permit or Letter of permission)	A
	PROFFERED PERMIT (Standard Permit or Letter of permission)	B
	PERMIT DENIAL	C
<b>X</b>	APPROVED JURISDICTIONAL DETERMINATION	D
	PRELIMINARY JURISDICTIONAL DETERMINATION	E

**SECTION I** - The following identifies your rights and options regarding an administrative appeal of the above decision. Additional information may be found in Corps regulations at 33 CFR Part 331, or at <http://www.usace.army.mil/Missions/CivilWorks/RegulatoryProgramandPermits/FederalRegulation.aspx>

**A: INITIAL PROFFERED PERMIT:** You may accept or object to the permit.

- **ACCEPT:** If you received a Standard Permit, you may sign the permit document and return it to the district engineer for final authorization. If you received a Letter of Permission (LOP), you may accept the LOP and your work is authorized. Your signature on the Standard Permit or acceptance of the LOP means that you accept the permit in its entirety, and waive all rights to appeal the permit, including its terms and conditions, and approved jurisdictional determinations associated with the permit.
- **OBJECT:** If you object to the permit (Standard or LOP) because of certain terms and conditions therein, you may request that the permit be modified accordingly. You must complete Section II of this form and return the form to the district engineer. Your objections must be received by the district engineer within 60 days of the date of this notice, or you will forfeit your right to appeal the permit in the future. Upon receipt of your letter, the district engineer will evaluate your objections and may: (a) modify the permit to address all of your concerns, (b) modify the permit to address some of your objections, or (c) not modify the permit having determined that the permit should be issued as previously written. After evaluating your objections, the district engineer will send you a proffered permit for your reconsideration, as indicated in Section B below.

**B: PROFFERED PERMIT:** You may accept or appeal the permit

- **ACCEPT:** If you received a Standard Permit, you may sign the permit document and return it to the district engineer for final authorization. If you received a Letter of Permission (LOP), you may accept the LOP and your work is authorized. Your signature on the Standard Permit or acceptance of the LOP means that you accept the permit in its entirety, and waive all rights to appeal the permit, including its terms and conditions, and approved jurisdictional determinations associated with the permit.
- **APPEAL:** If you choose to decline the proffered permit (Standard or LOP) because of certain terms and conditions therein, you may appeal the declined permit under the Corps of Engineers Administrative Appeal Process by completing Section II of this form and sending the form to the division engineer. This form must be received by the division engineer within 60 days of the date of this notice.

**C: PERMIT DENIAL:** You may appeal the denial of a permit under the Corps of Engineers Administrative Appeal Process by completing Section II of this form and sending the form to the division engineer. This form must be received by the division engineer within 60 days of the date of this notice.

**D: APPROVED JURISDICTIONAL DETERMINATION:** You may accept or appeal the approved JD or provide new information.

- **ACCEPT:** You do not need to notify the Corps to accept an approved JD. Failure to notify the Corps within 60 days of the date of this notice, means that you accept the approved JD in its entirety, and waive all rights to appeal the approved JD.
- **APPEAL:** If you disagree with the approved JD, you may appeal the approved JD under the Corps of Engineers Administrative Appeal Process by completing Section II of this form and sending the form to the division engineer. This form must be received by the division engineer within 60 days of the date of this notice.

**E: PRELIMINARY JURISDICTIONAL DETERMINATION:** You do not need to respond to the Corps regarding the preliminary JD. The Preliminary JD is not appealable. If you wish, you may request an approved JD (which may be appealed), by contacting the Corps district for further instruction. Also, you may provide new information for further consideration by the Corps to reevaluate the JD.

**SECTION II - REQUEST FOR APPEAL or OBJECTIONS TO AN INITIAL PROFFERED PERMIT**

REASONS FOR APPEAL OR OBJECTIONS: (Describe your reasons for appealing the decision or your objections to an initial proffered permit in clear concise statements. You may attach additional information to this form to clarify where your reasons or objections are addressed in the administrative record.)

ADDITIONAL INFORMATION: The appeal is limited to a review of the administrative record, the Corps memorandum for the record of the appeal conference or meeting, and any supplemental information that the review officer has determined is needed to clarify the administrative record. Neither the appellant nor the Corps may add new information or analyses to the record. However, you may provide additional information to clarify the location of information that is already in the administrative record.

**POINT OF CONTACT FOR QUESTIONS OR INFORMATION:**

If you have questions regarding this decision and/or the appeal process you may contact:

US Army Corps of Engineers, Denver Regulatory Office  
Attn: Matt Montgomery  
9307 S. Wadsworth Blvd  
Littleton, CO 80128  
Telephone (720) 922-3852  
Matthew.R.Montgomery@usace.army.mil

If you only have questions regarding the appeal process you may also contact:

US Army Corps of Engineers, Northwestern Division  
Attn: Melinda Larsen, Regulatory Appeals Review Officer  
1201 NE Lloyd Blvd Ste 400  
Portland, OR 97232-1257  
Telephone (503) 808-3888  
Melinda.M.Larsen@usace.army.mil

RIGHT OF ENTRY: Your signature below grants the right of entry to Corps of Engineers personnel, and any government consultants, to conduct investigations of the project site during the course of the appeal process. You will be provided a 15-day notice of any site investigation and will have the opportunity to participate in all site investigations.

\_\_\_\_\_  
Signature of appellant or agent.

Date:

Telephone number: