



Parks & Open Space

5201 St. Vrain Road • Longmont, CO 80503
303-678-6200 • POSinfo@bouldercounty.gov
www.BoulderCountyOpenSpace.org

PARKS & OPEN SPACE ADVISORY COMMITTEE MEETING

Time/Date of Meeting: 6:30 p.m., Thursday, April 25, 2024

Location: Boulder County Courthouse
1325 Pearl Street, Third Floor, Boulder

TO:	Parks & Open Space Advisory Committee
FROM/PRESENTER:	Alexandra Phillips, County Bike Planner, Community Planning & Permitting
AGENDA ITEM:	US 36/North Foothills Bikeway Feasibility Study
ACTION REQUESTED:	Information Only

Introduction

North Foothills Highway between Boulder and Lyons is one of the most popular road segments in the county for cycling. Two of the reasons for its popularity are the undeveloped scenery and dramatic vistas, most of which are protected by the City of Boulder and Boulder County open space programs. The highway also provides access to several city and county trail systems through trailheads along, or in close proximity to, the road. The BCPOS Department has also supported and been involved in the development of the feasibility study because a bikeway along the highway could impact access to adjacent agricultural leases and irrigation features on county properties. Finally, since the North Foothills Highway corridor has the highest rate of significant vehicle crashes involving wildlife, the department wanted to coordinate the planning for the North Foothills Wildlife Crossing initiative along with the bikeway feasibility study. The safety and protection of all—motorists, cyclists, and wildlife—is a shared aspiration of both the bikeway study and the wildlife crossing initiative.

Purpose

US 36/North Foothills Highway is the location of the most cycling relating crashes in unincorporated Boulder County: 30% of all severe bicycle and pedestrian crashes (20 of 67) in unincorporated Boulder County from 2009 to 2018 occurred on US 36 (between Jay Road to intersection with CO 66). The majority of these crashes were caused by motorists leaving the travel lane, driving into the shoulder and crashing into cyclists. Separation of motorists and cyclists can greatly reduce bike/vehicle crashes. The bikeway would provide that separation.

Bikeway Feasibility Study

The County Transportation Master Plan identified this route for a multiuse path. The Denver Regional Council of Governments has identified the highway as a future Regional Active Transportation Corridor in its most recent Active Transportation Plan. The CDOT grant-funded study began in March 2023. Boulder County Parks and Open Space contributed \$15,000 to the local match for the \$400,000 grant.

Sections of the study area are adjacent to Parks and Open Space land. The study is being led by a steering committee with representatives from County Parks and Open Space. Susan Spaulding, Jeff Moline and Stefan Reinold are instrumental contributors. The other members

represent CDOT, City of Boulder Open Space and Mountain Parks, City of Boulder Transportation and Mobility, and the Town of Lyons. The committee and project are managed by County Community Planning & Permitting.

The major constraints of designing the bikeway are the steeply undulating topography, limitations of the existing CDOT right-of-way, and environmental resources. Due to these reasons, the alignment focused on the east side of the highway. The goal is to design a bikeway that:

- Is within CDOT right-of-way to the greatest extent possible
- Consists of a hard surface that is plowed in winter and maintained year-round
- Maximizes separation from US 36 vehicle lanes
- Uses guardrails, barriers and retaining walls when needed for separation when right-of-way is lacking.

POS staff support the conceptual alignment of the bikeway in the feasibility study. By keeping the bikeway on the east side of the highway and within the right-of-way for most of the route, its construction and use will have very minimal impacts to environmental resources and agricultural infrastructure. Additionally, POS and CP&P staff have been coordinating to ensure that the future bikeway will be compatible with future wildlife crossings. The Study outcome will be a final report that will include a right-of-way survey, environmental documentation, summary of public engagement, and conceptual bikeway alignments, estimated cost of construction and next steps.

Public Process

Members of the project team and steering committee have made informational presentations about the project to the City of Boulder Transportation Advisory Board and the Open Space and Mountain Parks Board of Trustees in February. Future Public Presentations include:

Remote (Zoom) public presentation 6 pm, April 16

In-person public presentation, Town of Lyons Library, 6 pm April 30

City of Boulder Transportation Advisory Board, June 10

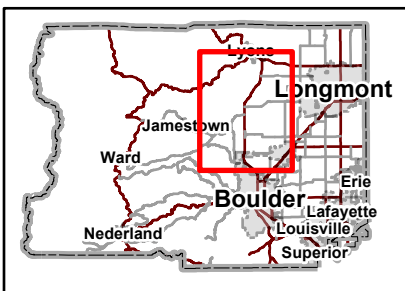
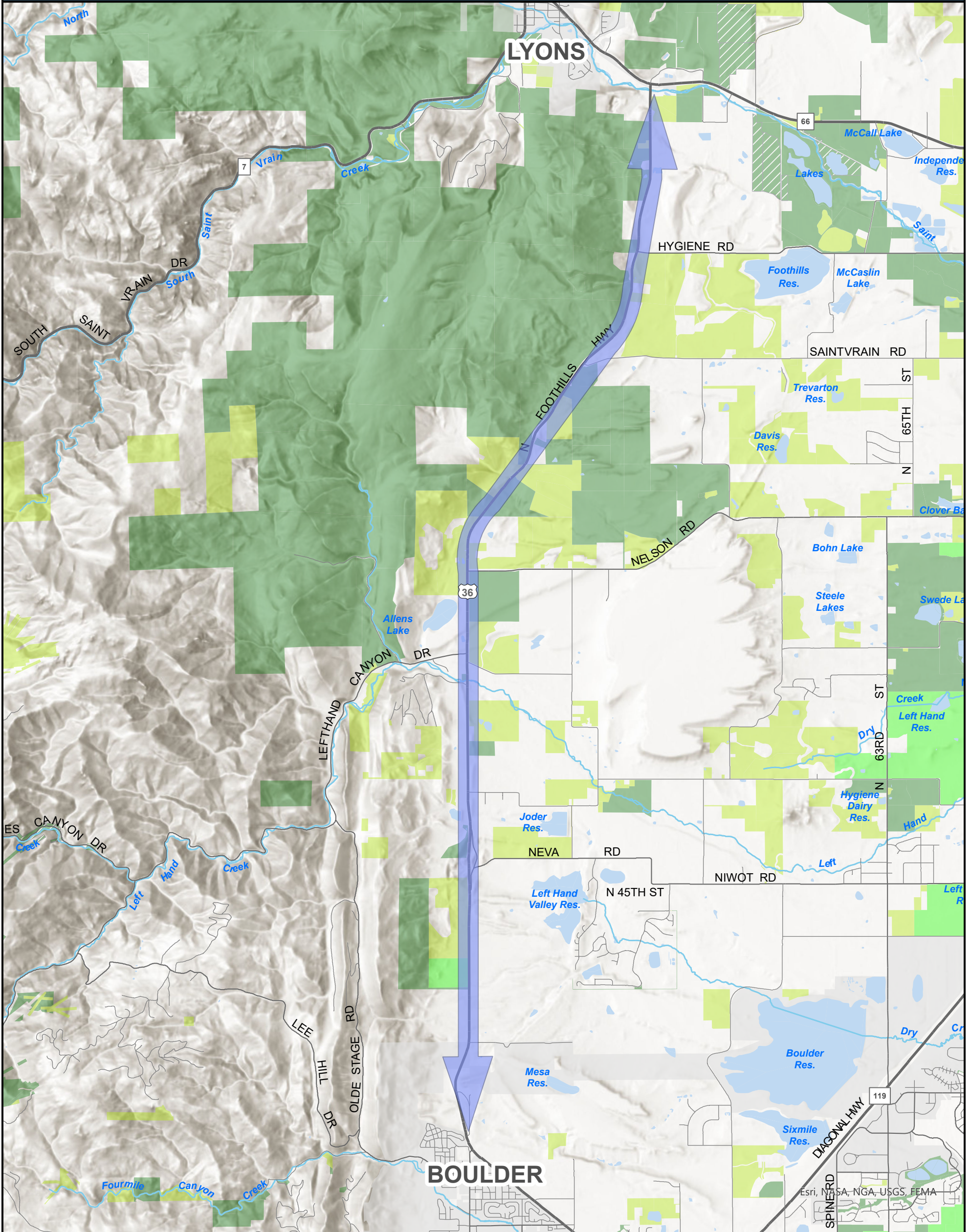
City of Boulder Open Space and Mountain Parks Board of Trustees, June 12

POSAC Action Requested

Staff is looking forward to the committee's feedback on the feasibility study

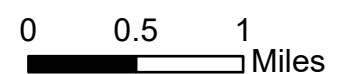
Attachments

- North Foothills Bikeway Feasibility Location Map
- North Foothills Bikeway Conceptual Alignment Map



Area of Detail
Date: 8/2/2023

- County Open Space
- Joint County and Municipal Open Space
- County Conservation Easement
- County Miscellaneous Easement
- Open Space Option
- Conservation Easement Option



The user agrees to all Terms of Use set forth by Boulder County. For Terms of Use, please visit: www.bouldercounty.org/mapdisclaimer



North Foothills Bikeway Feasibility Study

Boulder County Parks and Open Space

City of Boulder Open Space and Mountain Parks

Open Space and Mountain Parks - Habitat Conservation Area managed land

Future Analysis Required: conceptual alignments require future analysis and more in-depth study which was beyond the scope of this feasibility study.

Popular on road bike routes and trail connections

Creeks/Drainages

Segment 1

Segment 2

Segment 3

Segment 4

