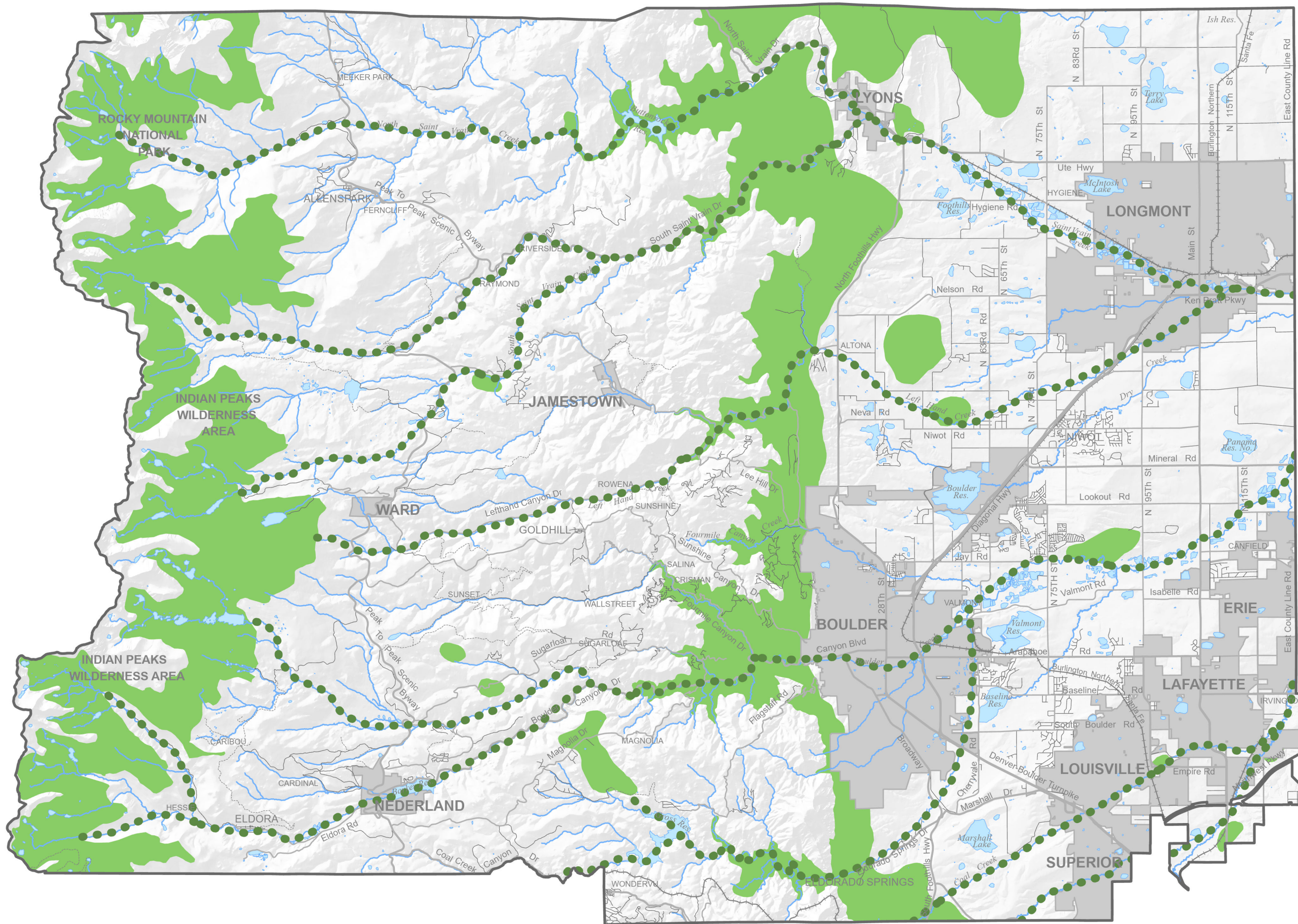


# Archaeologically Sensitive Areas

## Environmental Resources Element

- Archaeologically Sensitive Area
- Travel Routes
- Municipalities








Note: Map scale and reproduction method limit precision in physical features and boundary locations.

Adopted November 30, 1983  
Planning Commission



# County On-Street Bikeways Plan

## Transportation Element

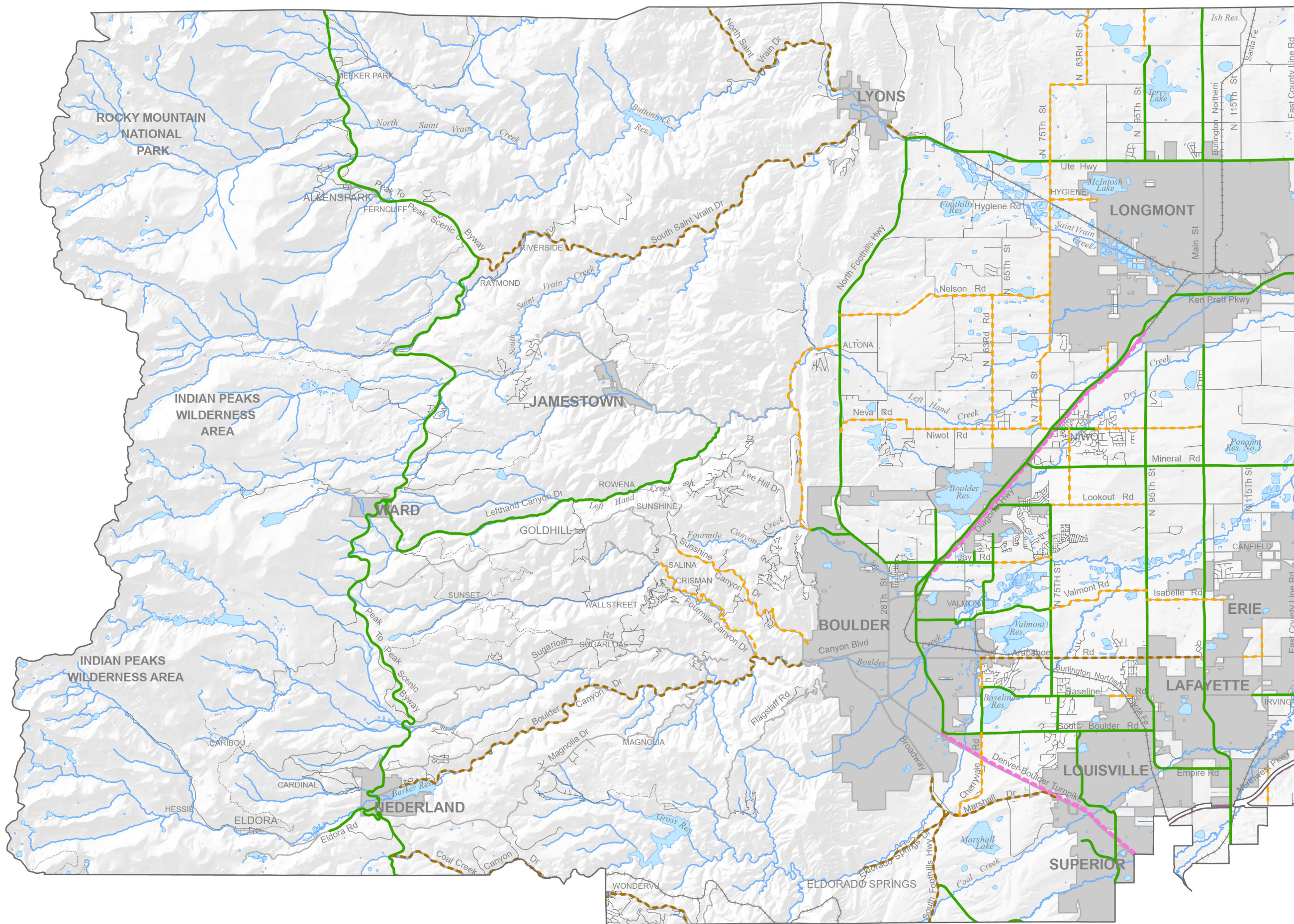
-  Road with Existing Shoulder
-  Proposed Shoulder - BoCo
-  Proposed Shoulder - CDOT
-  Proposed Separated Bikeway
-  Municipalities

Proposed Shoulder indicates a minimum of a 4-foot shoulder on plains roads. Shoulder width on mountain roads may vary due to topographic constraints.

Separated Bikeway routes represent conceptual locations and may not represent exact path configuration.

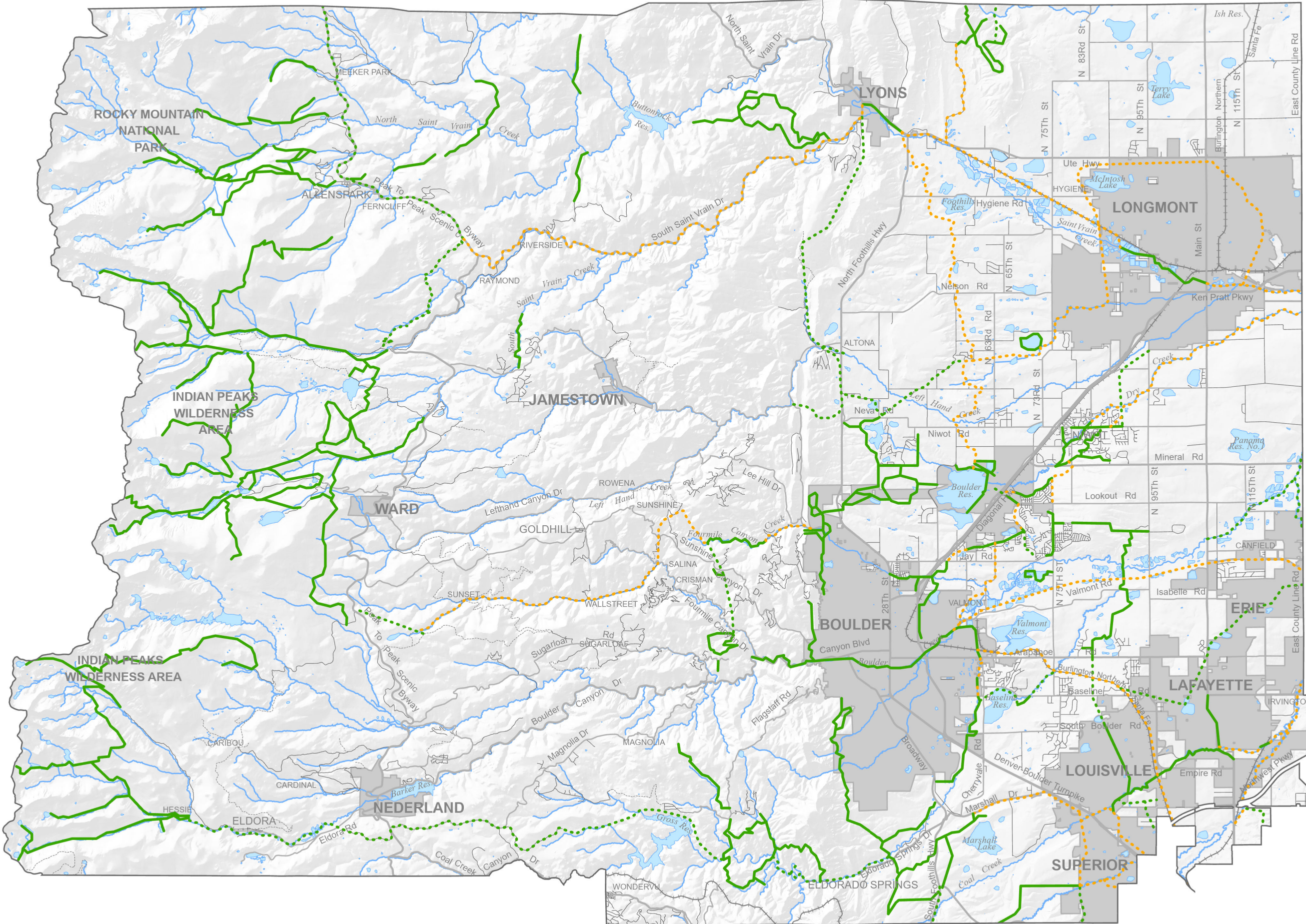
Note: Map scale and reproduction method limit precision in physical features and boundary locations.

Adopted September 4, 2001  
Planning Commission





# County Trails



## Open Space Element

- Existing
- - - Alignment
- . . . Corridor
- Municipalities

A Conceptual Trail Alignment is a route where the general location has already been identified, usually alongside a landscape feature such as a stream or road.

A Conceptual Trail Corridor is a general course that usually links specific destinations, but no landscape feature or specific location has been determined for the trail itself. Corridors are depicted on this map with a dotted symbol in order to portray their inexact location.

While a few Conceptual Trail Alignments and Corridors are shown across land that is currently owned by a public land agency, many of these conceptual courses are on private land. Conceptual trail designations are merely proposed, no trail has been constructed and the area is not open to public access.



For detailed trail and trailhead information, contact the Boulder County Parks and Open Space Department.

Note: Map scale and reproduction method limit precision in physical features and boundary locations.

Adopted January 20, 1999  
Planning Commission

Printed 5/23/2024

1" = 2.5 miles  
1:158,400

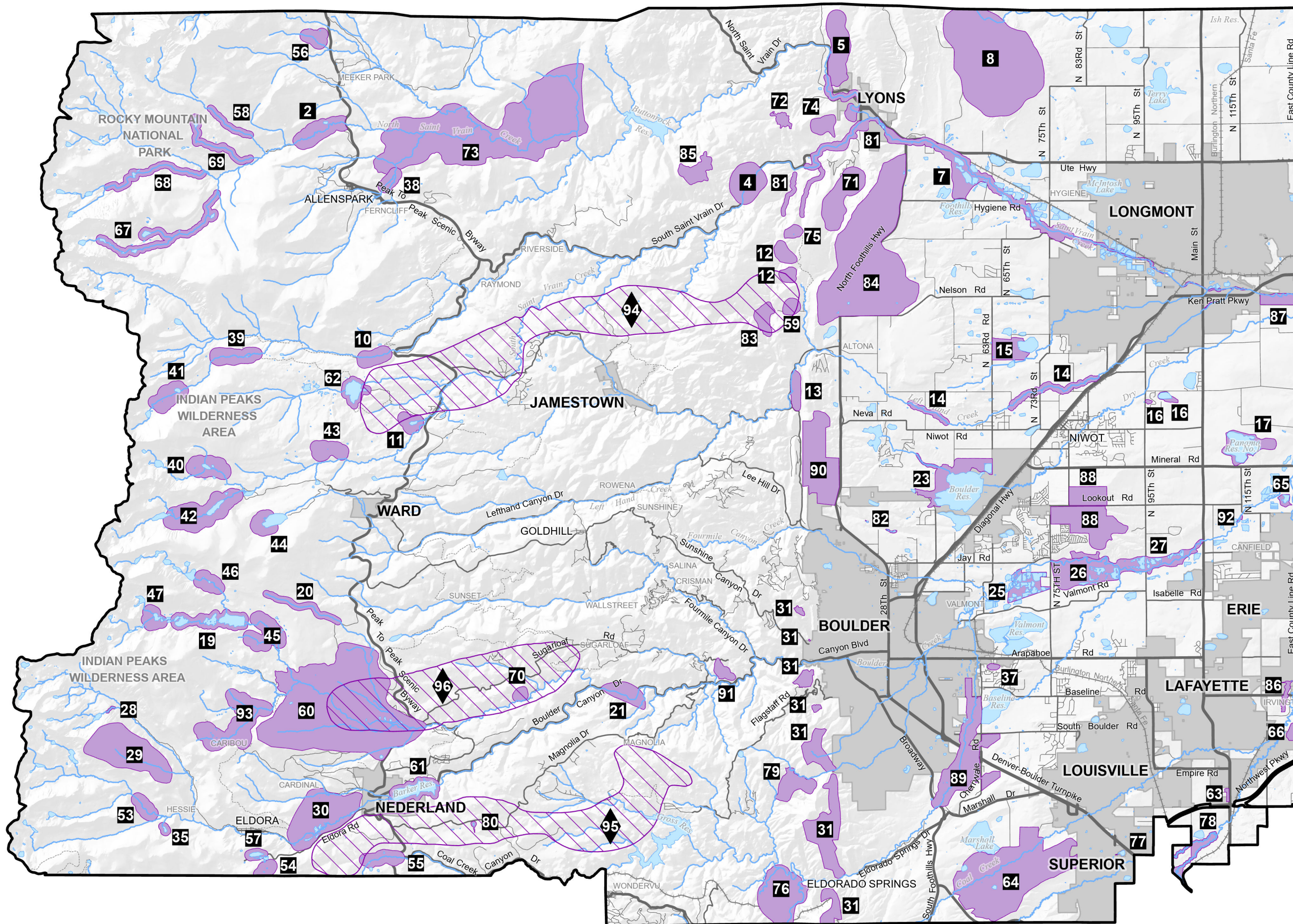



Comprehensive Plan Map



# Critical Wildlife Habitats and Migration Corridors

## Environmental Resources Element



### Critical Wildlife Habitats



An area of unique habitat which has a crucial role in sustaining populations of native wildlife and in perpetuating and encouraging a diversity of native species in the county. The area may be significantly productive habitat or particularly vital to the life requirements of species that are critically imperiled or vulnerable to extirpation.

### Wildlife Migration Corridors



A specific, delineated area of known elk migration movement for a major elk herd in Boulder County

Note: Map scale and reproduction method limit precision in physical features and boundary locations.

Adopted December 14, 2022  
Planning Commission



## Critical Wildlife Habitats

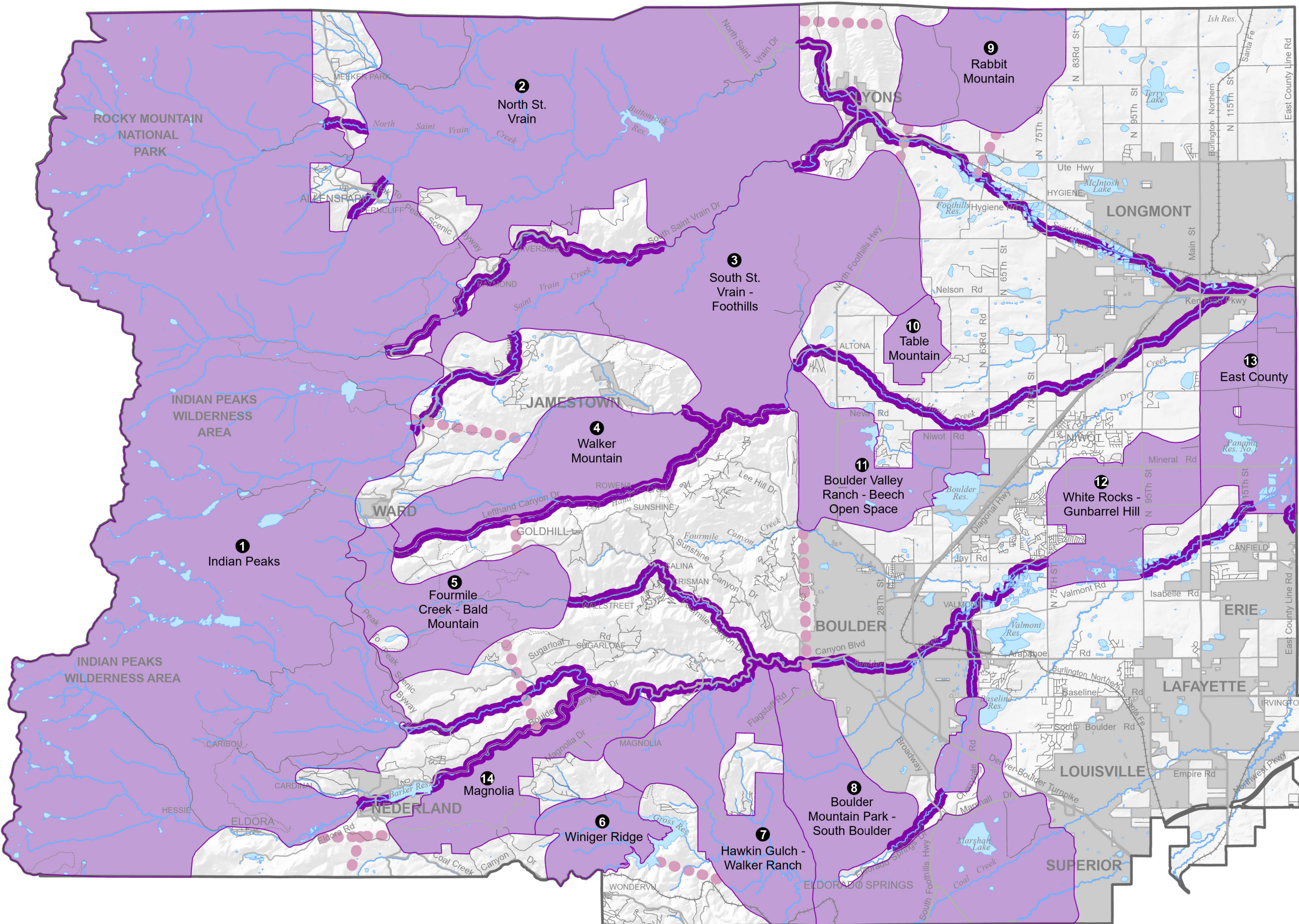
2	Copeland Willow Carr	58	Hunters Creek
4	Deadman Gulch and South St. Vrain	59	Geer Canyon
5	Steamboat Mountain	60	Caribou Ranch Montane Parkland
7	St. Vrain Corridor	61	Barker Reservoir
8	Rabbit Mountain	62	Beaver Reservoir
10	Middle St. Vrain Willow Carr	63	Goose Pond
11	Tumblesom Lake	64	Southern Grasslands
12	Marietta Canyon	65	Kenosha Wetlands
13	Lefthand Palisades	66	Two Creeks
14	Lefthand Creek Cottonwood Groves	67	Cony Creek
15	Lagerman Reservoir	68	Ouzel Creek
16	Gaynor Lakes	69	Sandbeach Creek
17	Panama Reservoir	70	Peewink Mountain
19	City of Boulder Watershed	71	Red Hill Gulch
20	Como Creek	72	Antelope Park
21	Boulder Falls Area	73	North Saint Vrain Canyon
23	Boulder Reservoir	74	Hat Rock
25	Walden and Sawhill Ponds	75	Ingersol Quarry
26	White Rocks	76	South Draw
27	Lower Boulder Creek Riparian Area	77	Hodgson-Harris Reservoir
28	Diamond Lake Outlet	78	Buffalo Gulch and Rock Creek
29	Chittenden Meadows	79	Bear and Aspen Canyons
30	Arapaho Ranch - Tucker Homestead	80	Giggey Lake
31	Boulder Mountain Parks Eldorado Mountain	81	Hall 2
35	Lost Lake	82	B.L.I.P. Ponds and Lapin Pond
37	Sombrero Marsh	83	Geer Meadows
38	Lazy H. Ranch Willow Carr	84	Red Hill
39	Coney Flats Willow Carr	85	Coffin Top Mountain
40	Mitchell Lake Willow Carr	86	Powers March
41	Coney Lake Willow Carr	87	Quicksilver
42	Long Lake Willow Carr	88	Gunbarrel Hill
43	South St. Vrain Willow Carr	89	South Boulder Creek Floodplain and Terrace
44	Lefthand Reservoir Willow Carr	90	North Boulder Grasslands
45	Boulder Watershed Willow Carr	91	Bummer's Gulch
46	Lake Albion Willow Carr	92	Kenosha Heronry
47	Triple Lakes Willow Carr	93	Upper Caribou Park Willow Carr Complex
53	Woodland Flats Willow Carr	94	North Foothills Elk Herd
54	Buckeye Basin Willow Carr	95	Winiger Ridge Elk Herd
55	Los Lagos Willow Carr	96	Peewink Mountain Elk Herd
56	Roaring Fork Willow Carr		
57	Peterson Lake		

\*CWH numbering is not sequential. Some previously established CWH's have been deleted or subsumed by another CWH. Those numbers were "retired".



# Environmental Conservation Areas

## Environmental Resources Element



- Environmental Conservation Areas  
*Areas of the County that possess a relatively low amount of fragmentation, contain high quality natural resources or habitats, are designated at a sufficient size to provide ecological benefit, and/or have significant potential for restoration.*
  
- Overland Habitat Connector  
*Areas of wildlife movement across relatively unfragmented landscapes which provide connectivity among Environmental Conservation Areas.*
  
- Riparian Habitat Connector  
*Areas of wildlife movement adjacent to relatively unfragmented waterways which provide connectivity among Environmental Conservation Areas.*
  
- Municipalities

Note: Map scale and reproduction method limit precision in physical features and boundary locations.

Adopted December 14, 2022  
 Planning Commission

Printed 5/23/2024

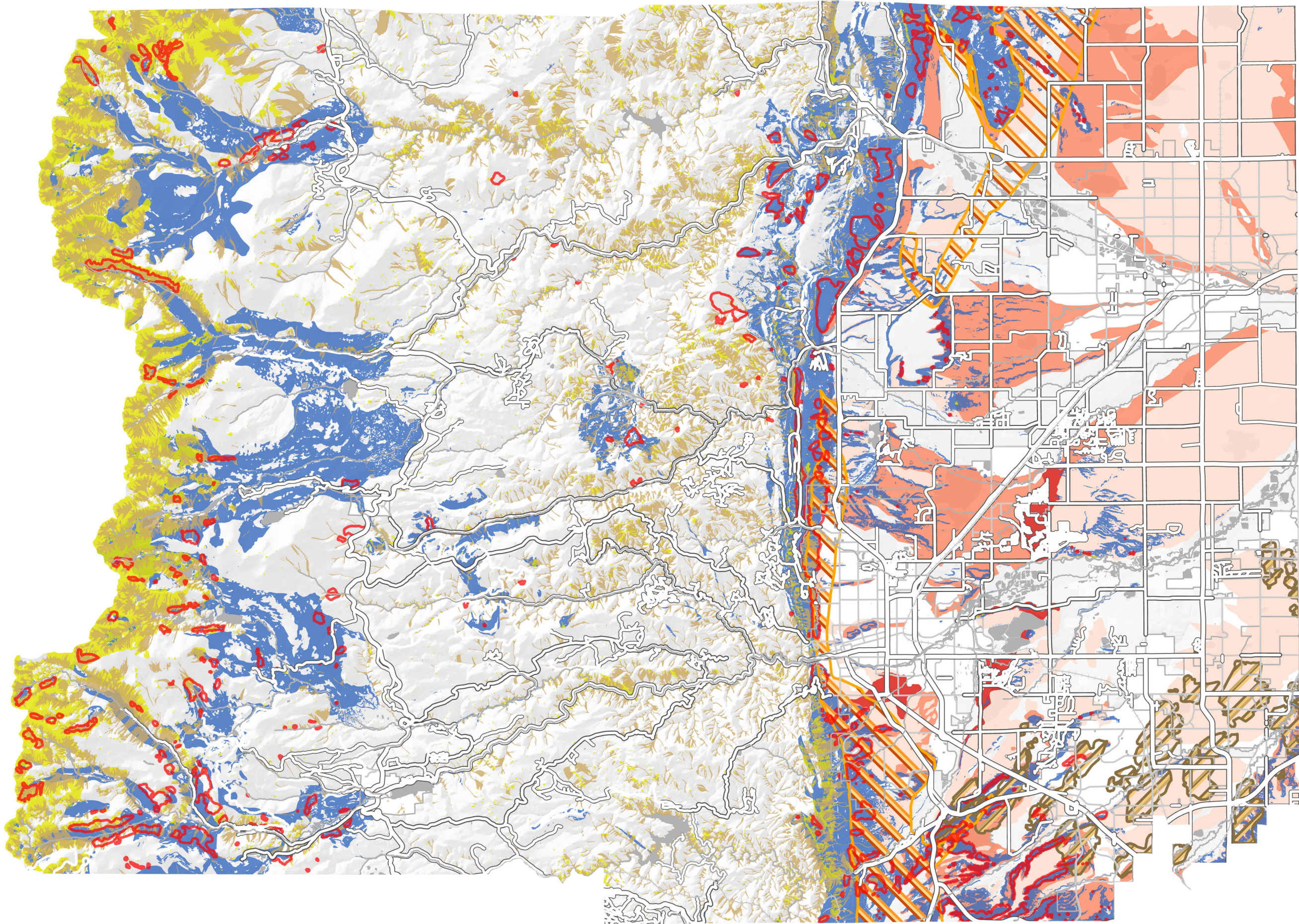
1" = 2.5 miles  
 1:158,400

Comprehensive Plan Map



# Geologic Hazard & Constraint Areas

Geology Element



- Slope Stability**
  - Debris flow susceptibility area
  - Rockfall susceptibility area
  - Landside susceptibility area
  - Landslide Inventory
- Heaving Bedrock**
  - Steeply Dipping, Heaving Bedrock
- Boulder Coal Field**
  - Extent of Abandoned Coal Mines
- Soil and Bedrock Swell Potential**
  - Very High
  - High
  - Moderate

Note: Refer to the reverse side for additional information on the studies used to compile this map.

Map scale and reproduction method limit precision in physical features and boundary locations.

Adopted May 20, 2020  
Planning Commission

Printed 5/23/2024



1" = 2.5 miles  
1:158,400





## Studies Used to Compile This Map

### Debris Flow Susceptibility Area

Cesare, Inc., Geologic Hazard Datasets, 2019 Revisions, Project No. 16.3097; May 9, 2019.  
Dataset: *Debris Flow Susceptibility*

Colorado Geological Survey, Kevin M. McCoy; Transmittal Information for Draft Maps Debris Flow Susceptibility Mapping in the Gold Run and Ingram Gulch Areas, Boulder County, Colorado; November 30, 2016.  
Datasets: *Gold Run Susceptible Areas, Ingram Gulch Susceptible Areas*

Colorado Geological Survey, Matthew L. Morgan, Jonathan L. White, F. Scot Fitzgerald, Karen A. Berry and Karen A. Morgan; Foothill and Mountainous Regions in Boulder County That May Be Susceptible to Landslides, Earth and Debris/Mud Flows; May 2, 2014.  
Dataset: *Debris Flow Susceptibility*

### Rockfall Susceptibility Area

Cesare, Inc., Geologic Hazard Datasets, 2019 Revisions, Project No. 16.3097; May 9, 2019.  
Datasets: *Rockfall Susceptibility*

### Landslide Susceptibility Area

Cesare, Inc., Geologic Hazard Datasets, 2019 Revisions, Project No. 16.3097; May 9, 2019.  
Dataset: *Landslide Susceptibility*

Colorado Geological Survey, Kassandra Lindsey; OF-19-06 Landslide Inventory and Susceptibility Map for Boulder County, Colorado. June 2019.  
Dataset: *Landslide Susceptibility*

### Landslide Inventory

Cesare, Inc., Geologic Hazard Datasets, 2019 Revisions, Project No. 16.3097; May 9, 2019.  
Dataset: *Landslide Inventory*

Colorado Geological Survey, Kassandra Lindsey; OF-19-06 Landslide Inventory and Susceptibility Map for Boulder County, Colorado. June 2019.  
Dataset: *Landslide Inventory*

### Steeply Dipping, Heaving Bedrock

Cesare, Inc., Geologic Hazard Study, Project No. 16.3097; March 31, 2017.  
Dataset: *Steeply Dipping, Heaving Bedrock*

### Boulder Coal Field

United States Geological Survey, Roberts, S.S., Hynes, J.L., and Woodward, C.L.; Maps Showing the Extent or Mining, Locations or Mine Shafts, Adits, Air Shafts, and Bedrock Faults, and Thickness or Overburden Above Abandoned Coal Mines in the Boulder-Weld Coal Field, Boulder, Weld, and Adams Counties, Colorado: Geologic Investigations Series 1-27 35. 2001.  
Dataset: *Extents of Abandoned Coal Mines*

### Soil and Bedrock Swell Potential







Colorado Geologic Survey, Hart, S.S. Potentially Swelling Soil and Rock in the Front Range Urban Corridor; 1974  
Dataset: *Swelling Soils and Bedrock*

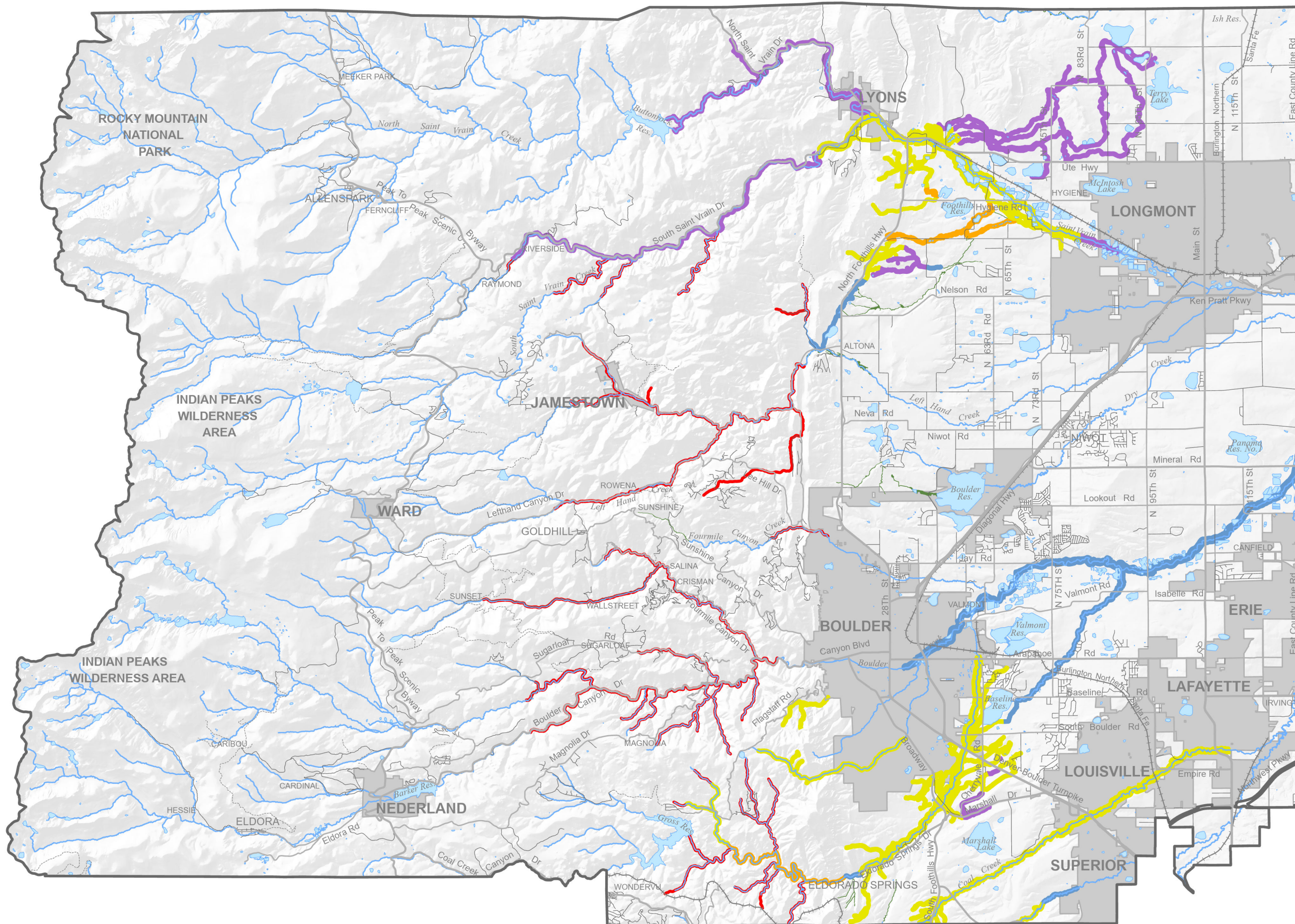


# Habitat Conservation Areas for Prebles Meadow Jumping Mouse

## Environmental Resources Element

Habitat Conservation Areas are adapted from the "Possible Conservation Zones" of the PMJM Handbook. The designations guide conservation of PMJM habitat with the overarching goal of aiding in the recovery of this threatened species.

- 
**Zone 1**  
**Mouse Management Area**  
*Areas in which the PMJM is known to occur, including adjacent habitat patches that are likely to be occupied. Management should emphasize maintaining higher quality riparian habitat and higher numbers of mice. Areas of poor quality are priorities for restoration with high expectations for success.*
- 
**Zone 2**  
**Possible Linkages**  
*Linkages are designated for populations that once occurred as a single unit but are now fragmented. Linkages provide adequate structure for a few mice to "make it to the other side", facilitating dispersal, population maintenance, and genetic exchange.*
- 
**Zone 3**  
**Suitable Contiguous Habitat**  
*Areas of suitable habitat that are contiguous to a known population and are not known to be occupied by PMJM.*
- 
**Zone 4**  
**Potential Restoration, Contiguous**  
*Areas not known to be occupied, but contiguous with known populations, where restoration of unsuitable or degraded habitat could result in a significant increase in a PMJM population.*
- 
**Zone 5**  
**Suitable Noncontiguous Habitat**  
*Areas of suitable habitat that are NOT contiguous to a known population and are not known to be occupied by PMJM.*
- 
**Foothills Perennial Stream Habitat**  
*Areas of suitable PMJM Habitat along foothills perennial streams up to elev. 7600 ft., not covered under one of the other designations. PMJM are known to occupy riparian habitat up to this elevation (USFWS, 2004).*



Adopted July 15, 2015  
 Planning Commission

Printed 5/23/2024

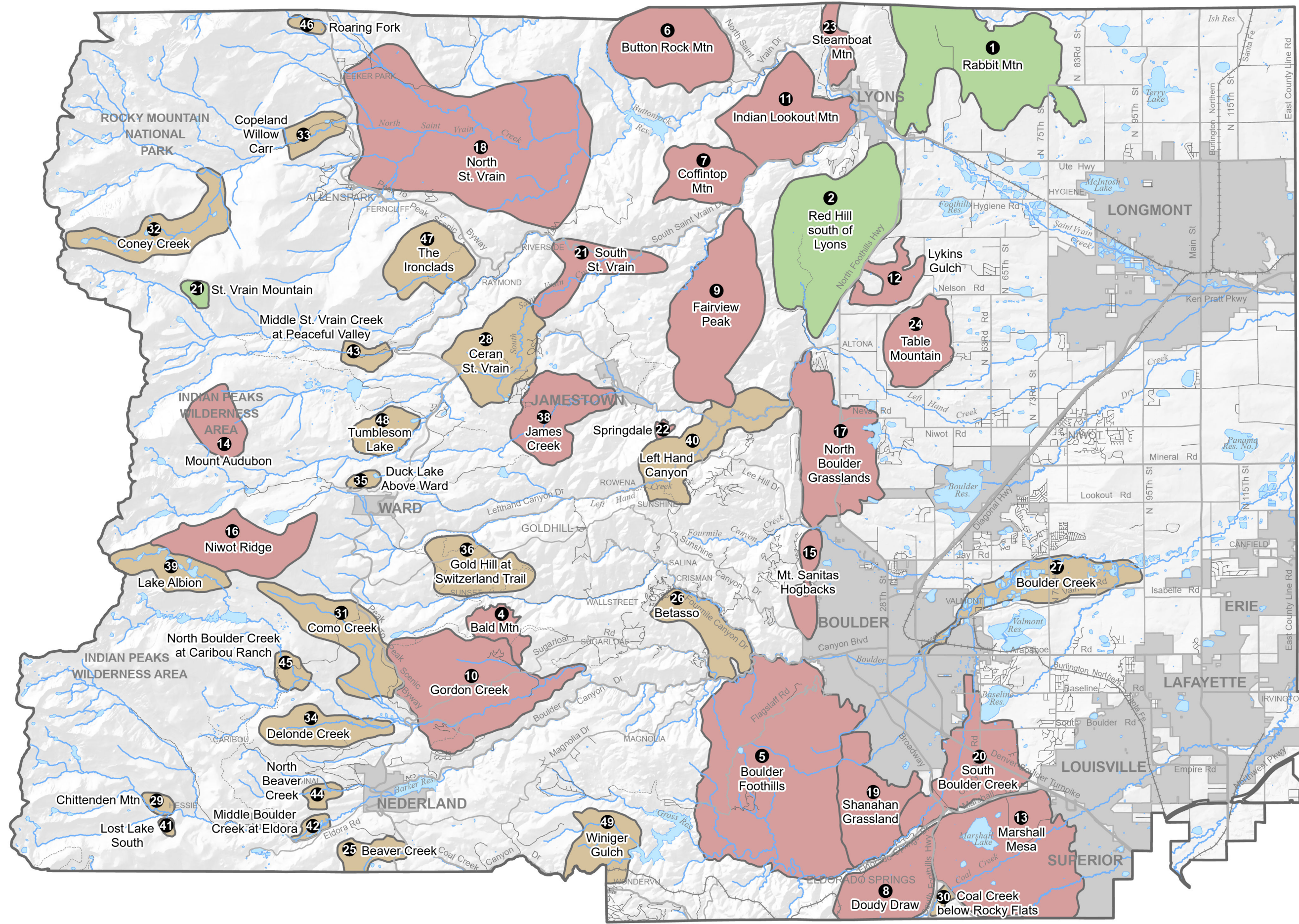


1" = 2.5 miles  
 1:158,400





# High Biodiversity Areas Environmental Resources Element



**High Biodiversity Areas**  
An area with a concentration of rare environmental resources that represents one of the greatest opportunities for preserving specific aspects of Boulder County's natural heritage. These areas have been identified and ranked by the CSU Natural Heritage Program.

**B1: Outstanding Biodiversity Significance (Irreplaceable)**

An area that on a global scale is irreplaceable. The area has a concentration of four or more globally critically imperiled to globally imperiled (G1-G2) element occurrences that are in excellent or good (A- or B-ranked) condition.

**B2: Very High Biodiversity Significance (Nearly Irreplaceable)**

An area that on a global scale is nearly irreplaceable and significant on a national scale. The area has a concentration of several biodiversity elements that are globally rare (G3) and/or species that are common globally (G4 or G5) but rare within Colorado.

**B3: High Biodiversity Significance**

An area that has statewide importance. The area has a concentration of several biodiversity elements that are more common globally but are excellent or good for this region.

**Municipalities**

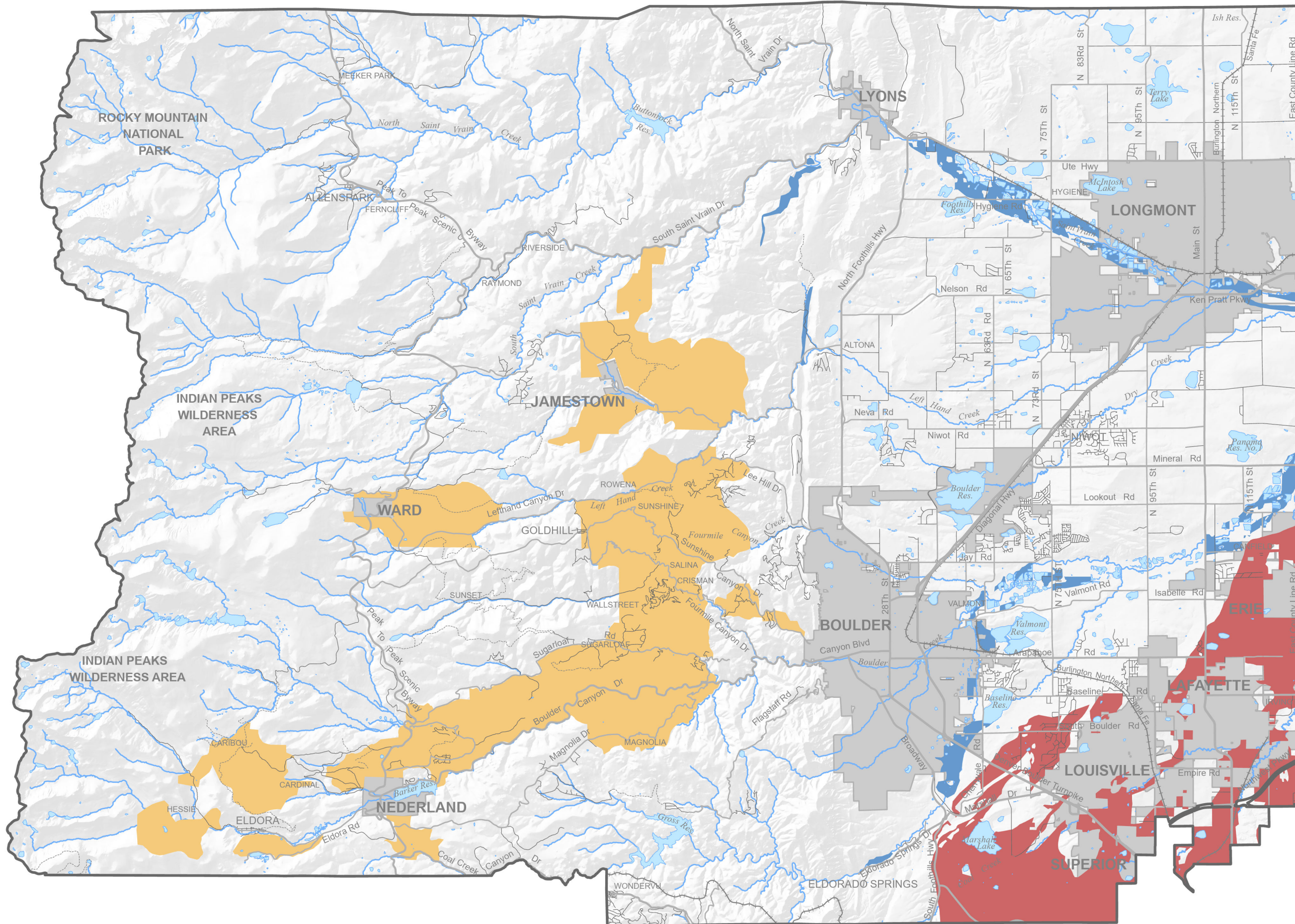
Note: Map scale and reproduction method limit precision in physical features and boundary locations.

Adopted December 14, 2022  
Planning Commission



# Mineral Resource Areas

## Geology Element



- Aggregate Resource Area
- Coal Resource Area
- Lode Mineral Area
- Municipalities

1. The title of this map sheet should not be confused with the term "Mineral Resources Area" defined within 24-65.1-104(11), CRS, as an "Area of State Interest."

2. Whether within or without a designated aggregate or other resource area, the County shall prohibit or regulate, including by Special Use Review and the like, the open mining of any mineral or earthen material including, but not limited to limestone, coal, peat, quarry aggregate, sand & gravel, sandstone, building stone, topsoil, common borrow, clay shale, gold, silver, zinc, copper, uranium, tungsten, and flourspar, as well as all necessary activities related thereto.

3. It shall be County policy to consider the following deposits as mapped by Schwachow et al., (Special Publications 5B, Colorado Geological Survey, 1974) to be "Commercial Mineral Deposits" as defined by 34-1.301(1)1, CRS:(a) "...fine-grained igneous rock..." in Township 2 North, Range 71 West, and (b) "F1" deposits in Ranges 69 and 70 West.

4. Map does not depict where Aggregate Resource Areas have been extracted and/or reclaimed. This information may be obtained from the Boulder County Community Planning & Permitting Department and/or the Division of Minerals and Geology, Colorado Department of Natural Resources.




5. "Site-specific information which became available subsequent to the adoption of the Boulder County Comprehensive Plan and the Master Plan for Mineral Extraction indicated that the Geer Canyon area (Sections 12, 13, 14, Township 2 North, Range 71 West) is extremely sensitive in terms of potential blasting effects and impacts upon surrounding residential areas and environmental quality." - Boulder County Planning Commission on 12/3/80. Board of County Commissioners not approved.

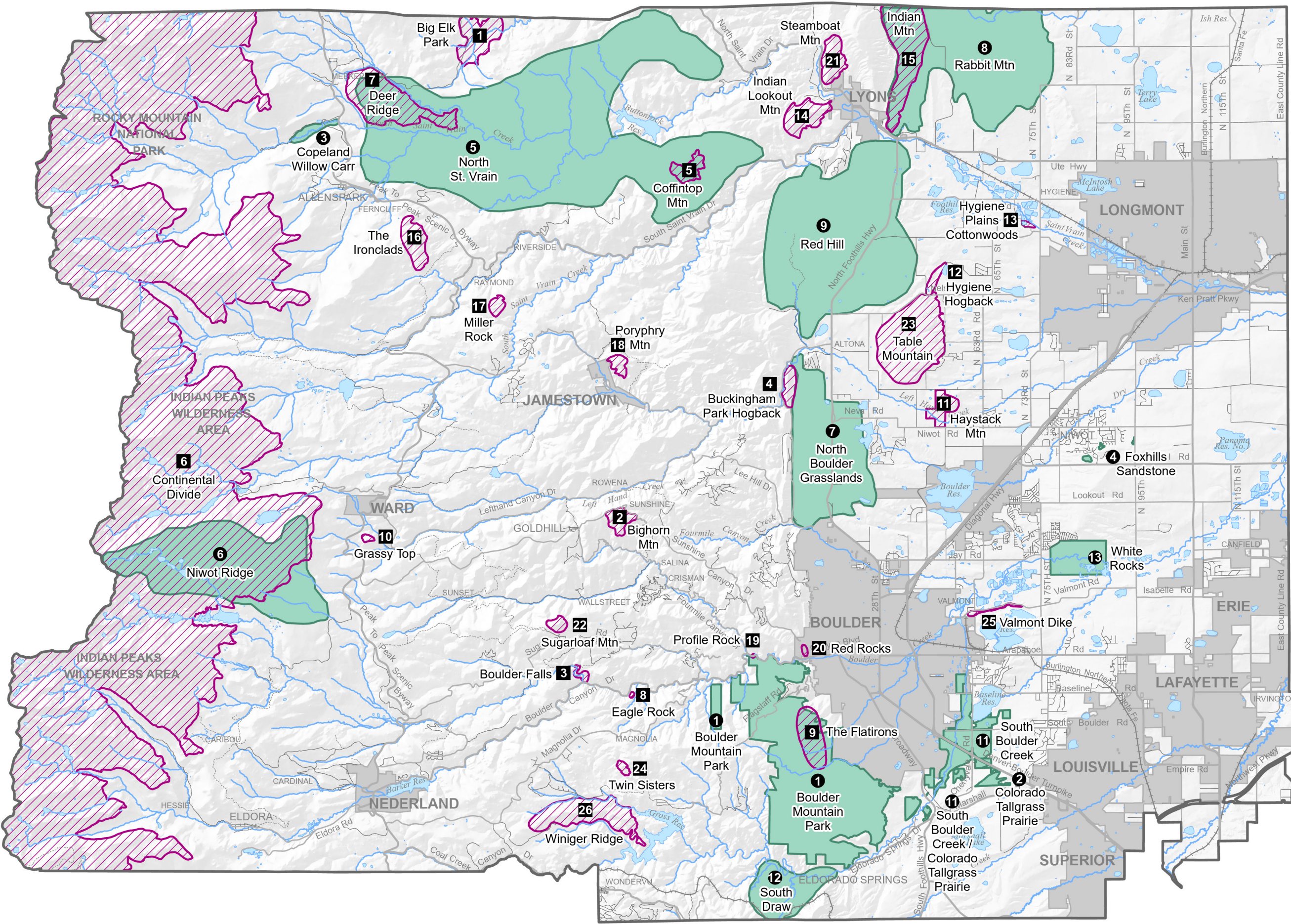
Note: Map scale and reproduction method limit precision in physical features and boundary locations.

Adopted February 24, 1982  
Planning Commission



# Natural Landmarks & Natural Areas Environmental Resources Element



-  **Natural Landmark**  
*A landscape feature designated solely for its visual and scenic prominence that distinguishes a specific locality in Boulder County.*
-  **Natural Area**  
*An area especially unique and important to the natural heritage of the county that typifies native vegetation and associated biological and geographical features, and provides habitat for rare or endangered species; or includes geologic or other natural features of scientific or educational value.*
-  **Municipalities**



Note: Map scale and reproduction method limit precision in physical features and boundary locations.

Adopted October 15, 2014  
Planning Commission

Printed 5/23/2024  
1" = 2.5 miles  
1:158,400

Comprehensive Plan Map



# Niwot Community Service Area

Niwot, Lefthand & Boulder Creek Subregion Element



- Niwot Community Service Area Boundary
- Very Low Density Residential
- Low Density Residential
- Medium Density Residential
- Business/Commercial
- Performance Industrial
- Public Open Space
- Private Open Space/P.U.D. Outlots
- Public/Quasi-Public Facilities

Public Open Space and parcel lines shown on this map are current as of Printed Date below.

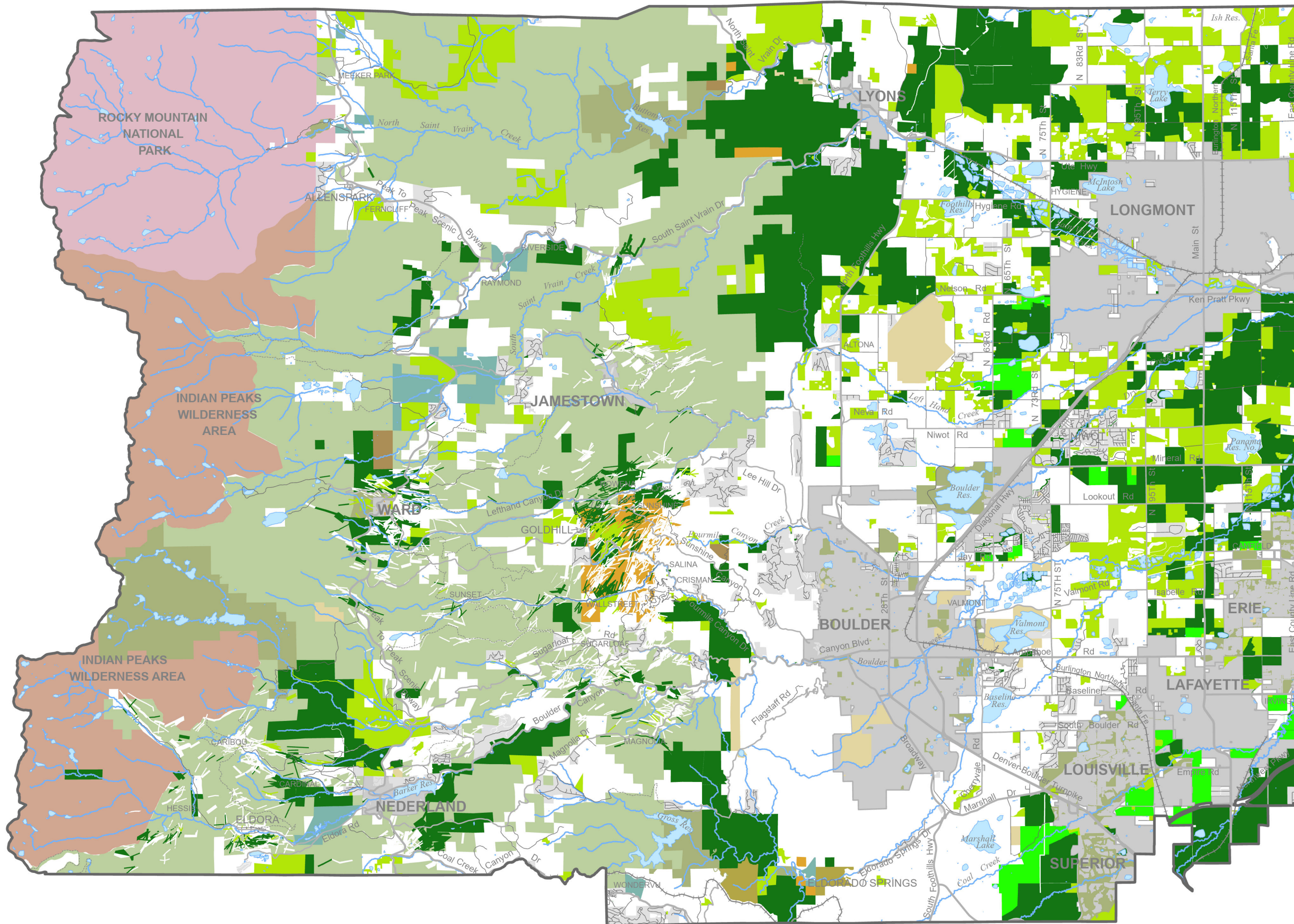
Note: Map scale and reproduction method limit precision in physical features and boundary locations.

Adopted September 20, 1995  
Planning Commission



# Open Space & Public Lands

## Open Space Element



- County Open Space
- County Conservation Easement
- Joint County/City Open Space
- Open Space Option
- CE Option
- Municipal Open Space
- State Land Board
- State Parks
- Indian Peaks Wilderness
- USFS Land
- BLM Land
- Rocky Mountain Nat'l Park
- Other Public Lands
- Non-County Conservation Easements
- Subdivisions and Other Platted Areas
- Municipalities

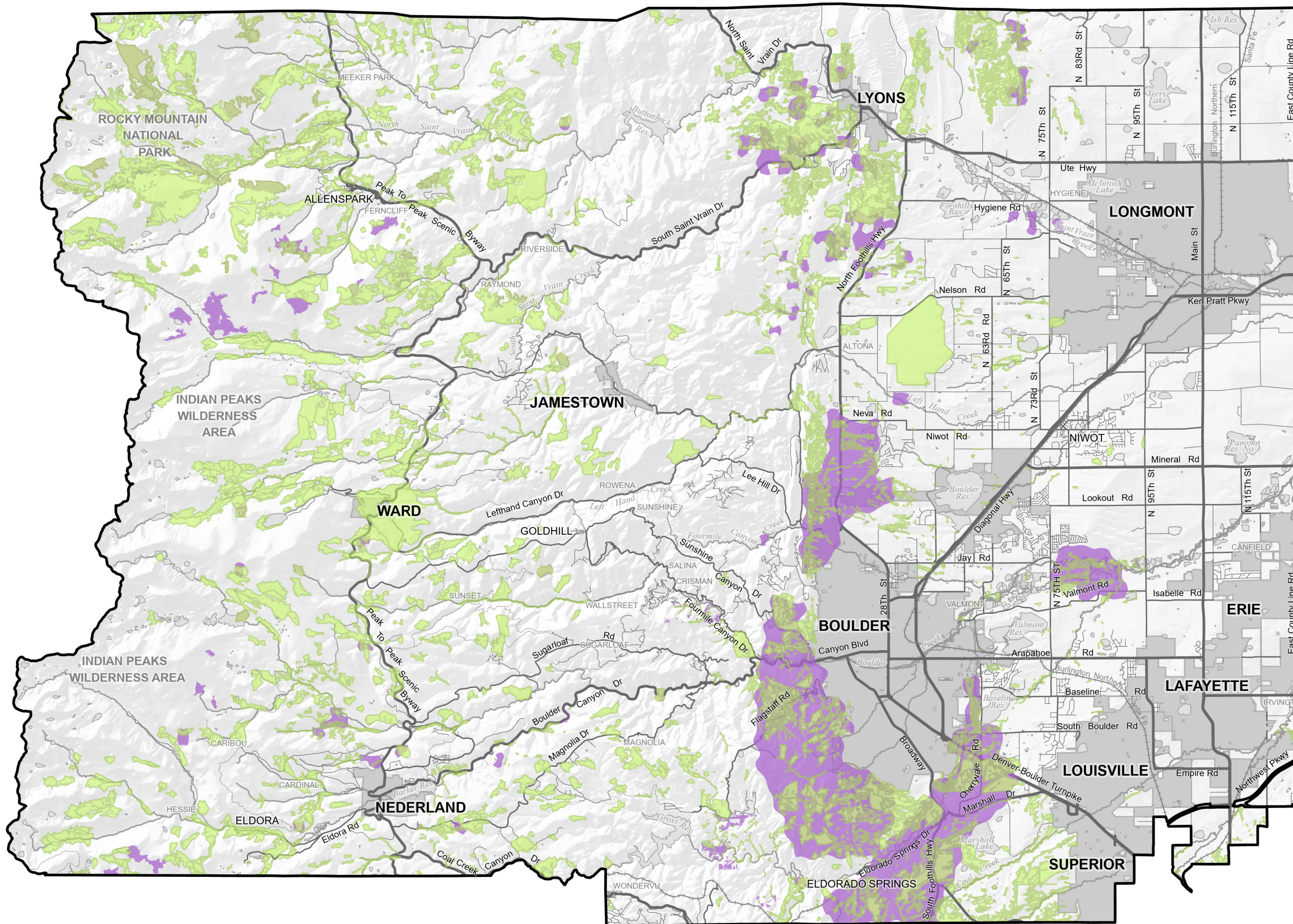
The Open Space and Public Lands Comprehensive Plan Map, adopted on March 15, 2017, reflects the open space and public land status as of that date. The adopted map does not include any planned or future open space or public lands. This updated version of the map displays the open space and public land status as of the printing date, not the adoption date. Due to constraints in the source data, it is not possible to depict the exact open space and public land status as of the adoption date.

Not all properties are open to public access.  
Contact the Boulder County Parks & Open Space Department for more information.

Note: Map scale and reproduction method limit precision in physical features and boundary locations.

Adopted March 15, 2017  
Planning Commission





# Rare Plant Areas & Significant Natural Communities

## Environmental Resources Element

Significant Natural Communities

Significant Natural Communities are areas that are recognized by the presence of a critical plant association that is limited in its distribution and occurrence. These areas have multiple important environmental resources that co-occur and interact. These areas have species and processes that are relatively undisturbed by human actions and currently exist in their natural state.

Data compiled from the following sources entities: Boulder County, City of Boulder, Rocky Mountain National Park, United States Forest

Rare Plant Areas

Significant natural communities, including significant riparian communities and rare plant sites, should be conserved and preserved to retain living examples of natural ecosystems, furnish a baseline of ecological processes and function, and enhance and maintain the biodiversity of the region.

Source scale is 1:50,000

Note: Map scale and reproduction method limit precision in physical features and boundary locations.

Adopted December 14, 2022  
Planning Commission

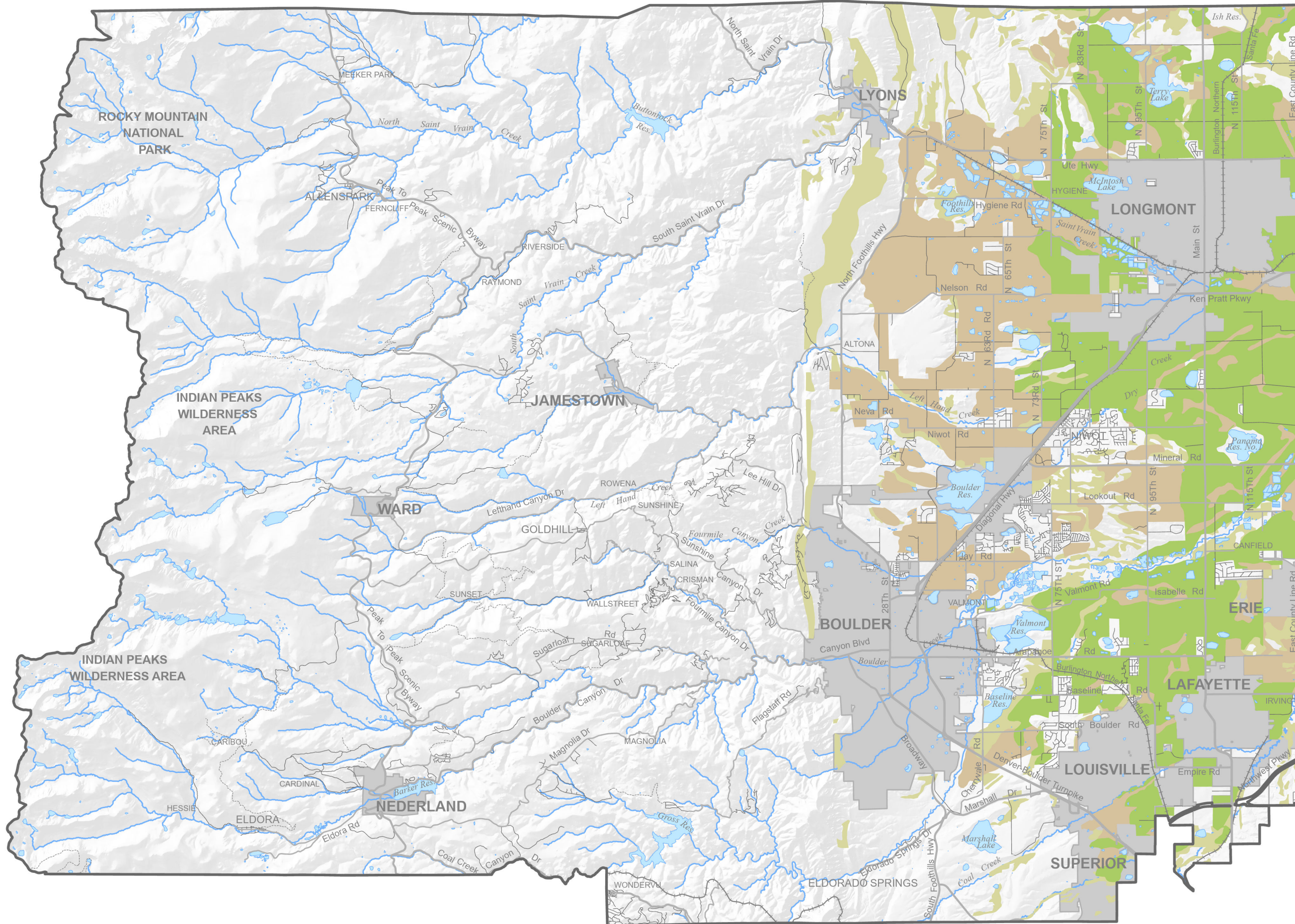
Printed 5/23/2024

1" = 2.5 miles  
1:158,400





# Significant Agricultural Lands Environmental Resources Element

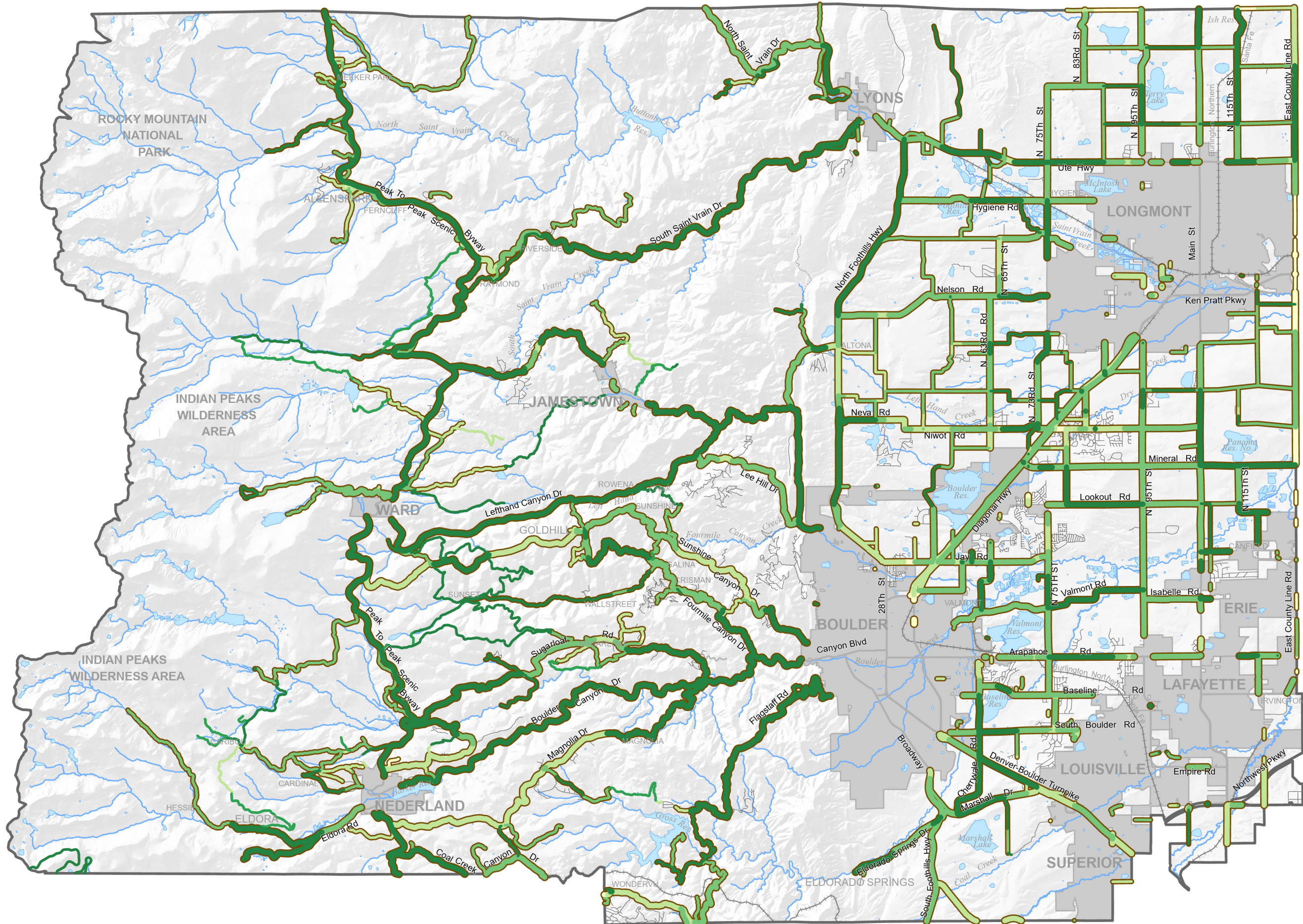


- Lands of National Importance
- Lands of Statewide Importance
- Lands of Local Importance
- Municipalities

Note: Map scale and reproduction method limit precision in physical features and boundary locations.

Adopted July 16, 1997  
Planning Commission





# View Protection Corridors

## Open Space Element

### View Protection Corridor Score

- 2 or More
  - 1 or More and Less than 2
  - Less than 1
  - No Criteria Found
- Major Rd.  
 Minor Rd.  
 Jeep Rd.

Municipalities

This map is intended to help inform a planner's assessment of the aesthetic view characteristics from Boulder County's roadways and to serve as a tool to support implementation of Policy 1.02.01 of the Open Space Element: "the county shall avoid, minimize, or mitigate impacts on views from view protection corridors." Reviews of development proposals incorporate a variety of site-specific considerations; this map is one component in staff's overall analysis. This map depicts view protection scores by road segment. See the Open Space Element Appendix for detail on the criteria and scoring system. The width of the View Protection Corridor line is for cartographic purposes to depict the type of roadway and does not represent land area.

Note: Map scale and reproduction method limit precision in physical features and boundary locations.

Adopted March 15, 2017  
 Planning Commission



# Wetlands and Riparian Areas

## Environmental Resources Element

### Riparian Areas

Riparian Areas are a unique combination of terrestrial plant communities and aquatic systems associated with flowing water that provide unique habitat and important movement corridors for wildlife.

Data compiled from the following sources entities: Boulder County, City of Boulder, Rocky Mountain National Park, State of Colorado.

### Wetlands

Wetland designations recognize the importance and value of preserving and protecting sufficient area to support the myriad of ecological processes and functions that wetland and riparian systems provide in the county. Wetlands are generally described as lands transitional between terrestrial and aquatic systems where the land is covered by shallow water or soils are saturated during the growing season.

Data compiled from the following sources: Boulder County, City of Boulder, Colorado Natural Heritage Program, Rocky Mountain National Park.

Note: Map scale and reproduction method limit precision in physical features and boundary locations.

Adopted December 14, 2022  
Planning Commission

Printed 5/23/2024



1" = 2.5 miles  
1:158,400



Comprehensive Plan Map

